

Body spray without volume control - Champagne (22kt Gold)

IMO

28 528 782



- spray head Ø 55mm
- ball-joint pivotable through 25° (in any direction)
- HORIZONTAL RAIN, max. flow rate 7 l/min (at 3 bar)
- anti-scale system
- rosette 60 x 60 mm
- 1/2" connection

Fits: IMO, MEM, CL.1, CYO

| | | |
|---|--------------------------------|---------------|
|  | Champagne (22kt Gold) | 28 528 782-47 |
|  | Chrome | 28 528 782-00 |
|  | Brushed Platinum | 28 528 782-06 |
|  | Platinum | 28 528 782-08 |
|  | Dark Chrome | 28 528 782-19 |
|  | Brushed Light Gold | 28 528 782-27 |
|  | Brushed Durabronze (23kt Gold) | 28 528 782-28 |
|  | Matte Black | 28 528 782-33 |
|  | Brushed Champagne (22kt Gold) | 28 528 782-46 |
|  | Brushed Chrome | 28 528 782-93 |
|  | Brushed Dark Platinum | 28 528 782-99 |

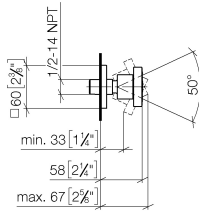
Recommended miscellaneous

- Concealed wall elbow -** 35 085 970 90
- max. recess depth 163 mm
 - min. recess depth 90 mm



28 528 782

mm [inches]



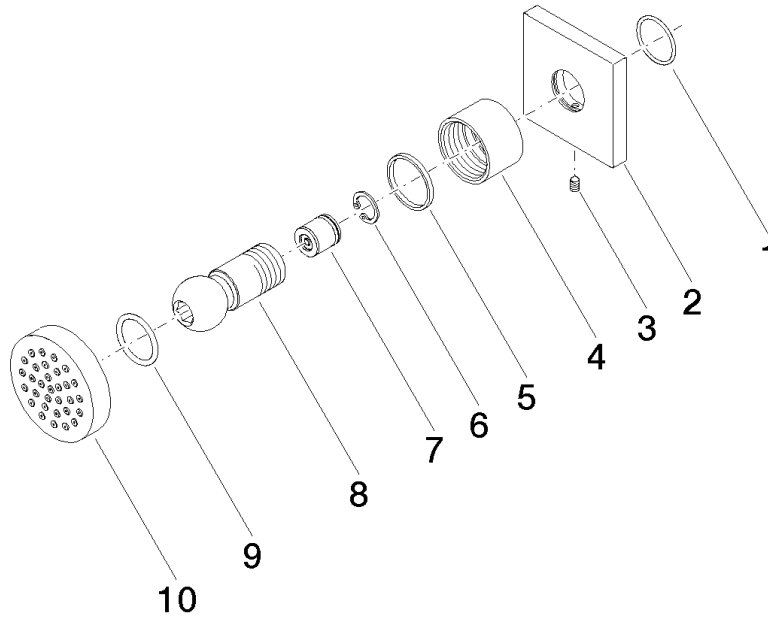
Flow rate chart



Certificates

LGA_38652.

28 528 782



Spare parts list

| No. | Item Number | Name | Quantity used | Delivery time |
|-----|--------------------|-----------------------|---------------|---------------|
| 1 | 09 14 10 098 90 | seal | 1 | 2 |
| 2 | 09 27 98 003-47 | rosette | 1 | 30 |
| 3 | 09 31 11 048 90 | pin | 1 | 2 |
| 4 | 09 23 30 026-47 | nut | 1 | 30 |
| 5 | 09 14 15 010 90 | ring | 1 | 2 |
| 6 | 09 16 01 014 90 | ring | 1 | 2 |
| 7 | 90 23 01 147 00 90 | back-flow preventer | 1 | 2 |
| 8 | 09 21 40 016-47 | connection | 1 | 30 |
| 9 | 09 14 10 015 90 | seal | 1 | 2 |
| 10 | 90 12 05 027 00-47 | casing (completely) | 1 | 60 |