

29 210 782

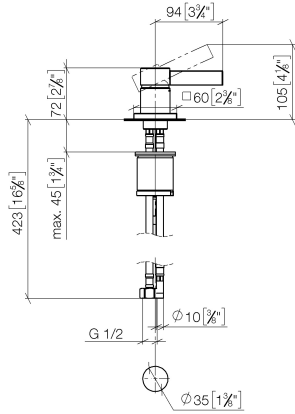
- hole diameter 35 mm
- rosette 60 x 60 mm
- 3x screw-in M 10 x 1 pressure hose, leak-tested



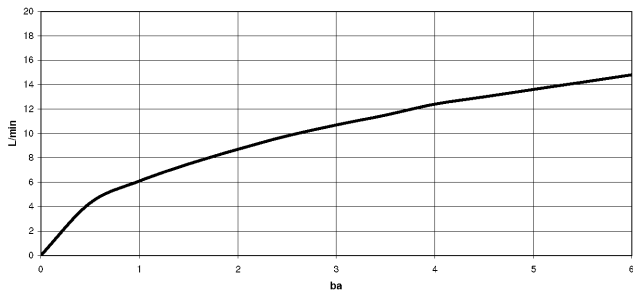
	Brushed Dark Platinum	29 210 782-99
	Chrome	29 210 782-00
	Brushed Platinum	29 210 782-06
	Platinum	29 210 782-08
	Dark Chrome	29 210 782-19
	Brushed Durabronze (23kt Gold)	29 210 782-28
	Brushed Champagne (22kt Gold)	29 210 782-46
	Champagne (22kt Gold)	29 210 782-47

29 210 782

mm [inches]



Flow rate chart



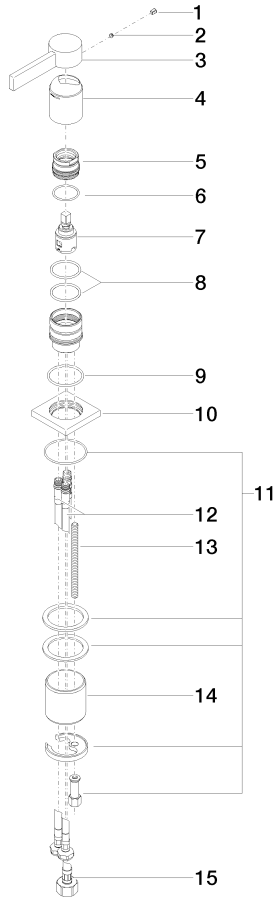
Certificates

LGA_28449.

GDV_0400283.

29 210 782

Parts for other finishes can be found here: [Chrome](#)



Spare parts list

No.	Item Number	Name	Quantity used	Delivery time
1	90 31 20 109 00 90	plug	1	2
2	90 31 11 063 00 90	pin	1	2
3	09 20 78 057-99	handle	1	30
4	09 11 02 289-99	cover	1	30
5	09 24 04 288 90	nut	1	2
6	09 14 10 137 90	seal	1	2
7	90 15 05 042 00 90	cartridge	1	2
8	09 14 10 192 90	seal	2	2
9	09 14 10 067 90	seal	1	2
10	09 27 78 040-99	rosette	1	30
11	04 30 11 038 02 90	fixing set	1	2
12	04 30 04 104 00 90	hose	2	2
13	09 31 11 012 90	pin	1	2
14	09 18 40 079 90	sleeve	1	2
15	04 30 04 019 00 90	hose	1	2