

## VAIA Wall-mounted valve cold water without pop-up waste - Dark Chrome

30 010 809



- 151mm projection
- fixed spout
- adapter with male thread 3/4"
- hole diameter 35 mm
- rosette Ø 60 mm
- max. flow 5.7 l/min
- lead-free
- This product can help a building meet the requirements of Green Building Rating Systems, e.g. LEED®, BREEAM®, DGNB
- WRAS

|                                                                                   |                                |               |
|-----------------------------------------------------------------------------------|--------------------------------|---------------|
|  | Dark Chrome                    | 30 010 809-19 |
|  | Chrome                         | 30 010 809-00 |
|  | Brushed Platinum               | 30 010 809-06 |
|  | Platinum                       | 30 010 809-08 |
|  | Brushed Durabronze (23kt Gold) | 30 010 809-28 |
|  | Brushed Bronze                 | 30 010 809-42 |
|  | Brushed Champagne (22kt Gold)  | 30 010 809-46 |
|  | Champagne (22kt Gold)          | 30 010 809-47 |
|  | Brushed Dark Platinum          | 30 010 809-99 |

### Recommended miscellaneous



**Concealed wall elbow -**

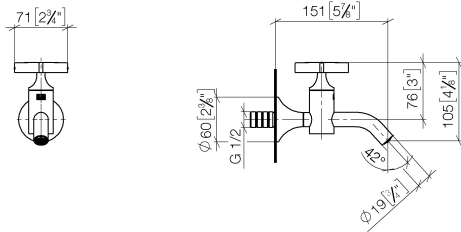
35 085 970 90

- min. recess depth mm
- max. recess depth mm

**VAIA Wall-mounted valve cold water without pop-up waste - Dark Chrome**

30 010 809

mm [inches]



**Flow rate chart**



**Codes & Standards**

DIN 4109

ISO 3822

Scottish Water  
Byelaws

UK Water Supply  
Regulations

Ü-Zeichen



## VAIA Wall-mounted valve cold water without pop-up waste - Dark Chrome

---

30 010 809

### Certificates

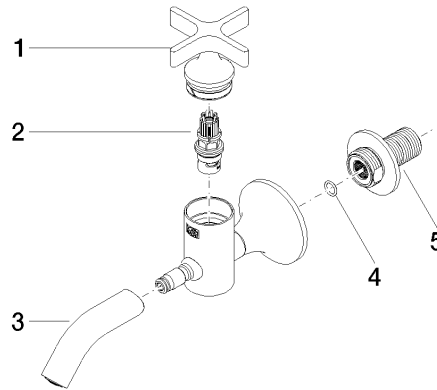
---

LGA\_18

WRAS\_240102

**VAIA Wall-mounted valve cold water without pop-up waste - Dark Chrome**

30 010 809



**Spare parts list**

| No. | Item Number        | Name   | Quantity used | Delivery time |
|-----|--------------------|--------|---------------|---------------|
| 1   | 90 20 66 025 00-19 | handle | 1             | 20            |
| 2   | 90 90 03 175 00 90 | top    | 1             | 2             |
| 3   | 90 28 22 381 00-19 | spout  | 1             | 20            |
| 4   | 90 14 10 060 00 90 | seal   | 1             | 2             |
| 5   | 09 24 03 269 90    | nipple | 1             | 2             |