



LULU Single-lever bath mixer for wall mounting without shower set - Chrome



LULU

33 200 710    Product version from 3/31/2009 to 3/19/2019



- 190mm projection
- circular normal flow
- automatic bath/shower diverter
- 3/8" shower outlet
- 1/2" connection
- gauge 150 mm - 10 mm
- max. flow 17.8 l/min at 3 bar flow pressure

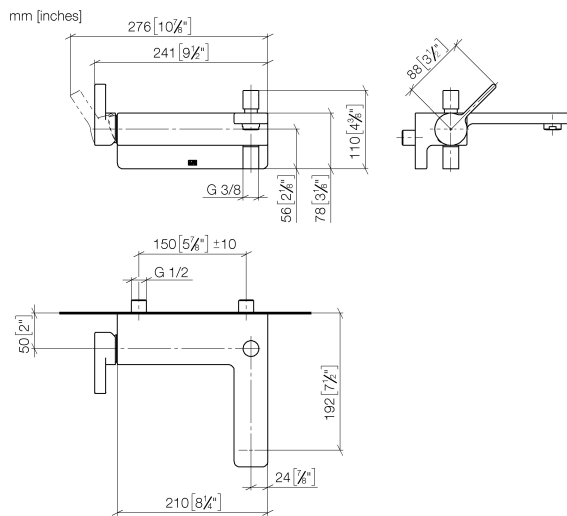
Intrinsic protection against back flow.

|   |                  |               |
|---|------------------|---------------|
|  | Chrome           | 33 200 710-00 |
|  | Brushed Platinum | 33 200 710-06 |

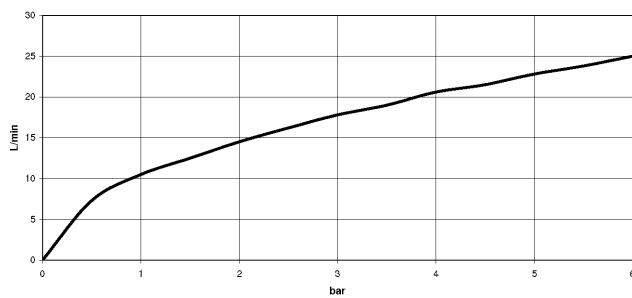
## LULU Single-lever bath mixer for wall mounting without shower set - Chrome

LULU

33 200 710 Product version from 3/31/2009 to 3/19/2019



Flow rate chart



### Codes & Standards

DIN 4109

EN 1717

ISO 3822

Ü-Zeichen



## LULU Single-lever bath mixer for wall mounting without shower set - Chrome

---

LULU

33 200 710 Product version from 3/31/2009 to 3/19/2019

### Certificates and sustainability

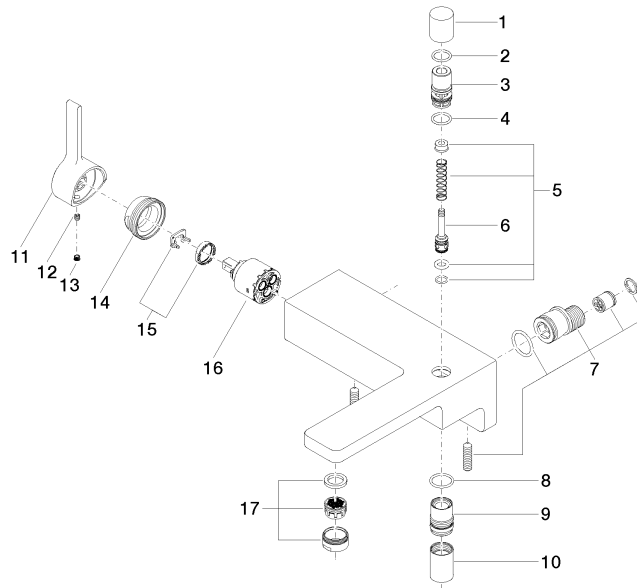
---

LGA\_9

Belgaqua\_21-376-2

33 200 710 Product version from 3/31/2009 to 3/19/2019

Parts for other  
finishes can be found  
here: Brushed  
Platinum



## Spare parts list

| No. | Item Number           | Name        | Quantity used | Delivery time |
|-----|-----------------------|-------------|---------------|---------------|
|     | 14 09 24 04 141-00    | nut         | 1.00          | 10            |
|     | 11 09 20 71 001-00    | handle      | 1.00          | 10            |
|     | 5 90 16 02 023 00 90  | spring      | 1.00          | 2             |
|     | 1 09 20 71 031-00     | handle      | 1.00          | 10            |
|     | 7 90 11 04 042 00 90  | connection  | 2.00          | 2             |
|     | 16 90 15 05 064 00 90 | cartridge   | 1.00          | 2             |
|     | 6 09 31 09 094 20-00  | pull-rod    | 1.00          | 10            |
|     | 8 09 14 10 122 90     | seal        | 1.00          | 2             |
|     | 3 09 21 34 080-00     | nipple      | 1.00          | 10            |
|     | 17 90 23 01 118 00-00 | aerator     | 1.00          | 10            |
|     | 9 09 24 03 129-00     | nipple      | 1.00          | 10            |
|     | 10 90 21 02 069 00-00 | cover       | 1.00          | 10            |
|     | 4 90 14 10 055 00 90  | seal        | 1.00          | 2             |
|     | 13 90 31 20 109 00 90 | plug        | 1.00          | 2             |
|     | 2 90 14 10 033 00 90  | seal        | 1.00          | 2             |
|     | 12 90 31 11 030 00 90 | pin         | 1.00          | 2             |
|     | 15 90 28 10 148 00 90 | accessories | 1.00          | 2             |