



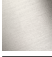


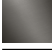
CL.1 Single-lever bidet mixer without pop-up waste - Brushed Champagne (22kt Gold)

CL.1

33 600 705    Product version from 5/10/2021



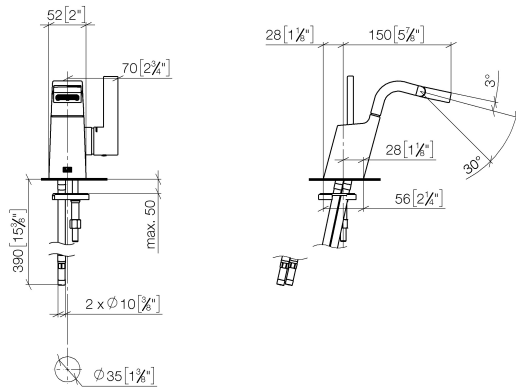
- 145mm projection
- pivotable spout 30°
- rectangular, air-enriched flow
- height of mixer 190 mm
- height up to aerator 113 mm
- hole diameter 35 mm
- 2x screw-in M 8 x 1 pressure hose, leak-tested
- max. flow 6 l/min
- WRAS

	Brushed Champagne (22kt Gold)	33 600 705-46
	Chrome	33 600 705-00
	Brushed Platinum	33 600 705-06
	Dark Chrome	33 600 705-19
	Champagne (22kt Gold)	33 600 705-47
	Brushed Dark Platinum	33 600 705-99

# CL.1 Single-lever bidet mixer without pop-up waste - Brushed Champagne (22kt Gold)

CL.1

33 600 705 Product version from 5/10/2021  
mm [inches]



Flow rate chart



## Codes & Standards

DIN 4109

ISO 3822

Scottish Water  
Byelaws

UK Water Supply  
Regulations

Ü-Zeichen



## CL.1 Single-lever bidet mixer without pop-up waste - Brushed Champagne (22kt Gold)

CL.1

---

33 600 705 Product version from 5/10/2021

Certificates and sustainability

---

LGA\_38

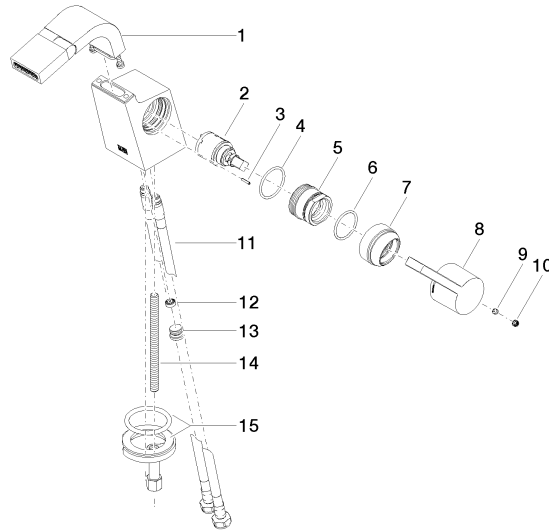
WRAS\_240202

## CL.1 Single-lever bidet mixer without pop-up waste - Brushed Champagne (22kt Gold)

CL.1

33 600 705 Product version from 5/10/2021

Parts for other  
finishes can be found  
here: [Chrome](#)



### Spare parts list

No.	Item Number	Name	Quantity used	Delivery time
10	90 31 20 109 00 90	plug	1.00	2
4	09 14 10 137 90	seal	1.00	2
13	04 31 20 039 11 90	plug	1.00	2
8	09 20 67 010-46	handle	1.00	60
9	90 31 11 030 00 90	pin	1.00	2
7	09 28 30 029-46	cover	1.00	60
5	09 24 04 294 90	sleeve	1.00	2
2	90 15 05 042 00 90	cartridge	1.00	2
15	04 30 11 038 75 90	fixing set	1.00	2
6	90 14 10 063 00 90	seal	1.00	2
12	09 23 01 034 90	flow reducer	1.00	2
11	04 30 04 100 00 90	hose	2.00	2
3	09 31 11 152 90	pin	1.00	2
14	09 31 11 012 90	pin	1.00	2
1	90 11 70 004 00-46	spout	1.00	-

Spare part can no longer be ordered, please order the replacement item