

Concealed single-lever mixer with cover plate with integrated shower connection - Platinum

SERIES SPECIFIC

36 046 970
Product version from 4/1/2024




- cover plate 80 x 80 mm

**Intrinsic protection against back flow.**

Intrinsic protection against back flow.

	Platinum	36 046 970-08
	Chrome	36 046 970-00
	Brushed Platinum	36 046 970-06
	Dark Chrome	36 046 970-19
	Brushed Light Gold	36 046 970-27
	Brushed Durabrass (23kt Gold)	36 046 970-28
	Matte Black	36 046 970-33
	Brushed Champagne (22kt Gold)	36 046 970-46
	Champagne (22kt Gold)	36 046 970-47
	Brushed Chrome	36 046 970-93
	Brushed Dark Platinum	36 046 970-99

Required miscellaneous

	<b>Concealed wall mounting -</b> •min. recess depth 80 mm •max. recess depth 105 mm	35 050 970 90
---	---	---------------

## Concealed single-lever mixer with cover plate with integrated shower connection - Platinum

SERIES SPECIFIC

36 046 970 Product version from 4/1/2024

mm [inches]



Flow rate chart



### Codes & Standards

DIN 4109

ISO 3822

Ü-Zeichen



## Concealed single-lever mixer with cover plate with integrated shower connection - Platinum

SERIES SPECIFIC

---

36 046 970 Product version from 4/1/2024

Certificates and sustainability

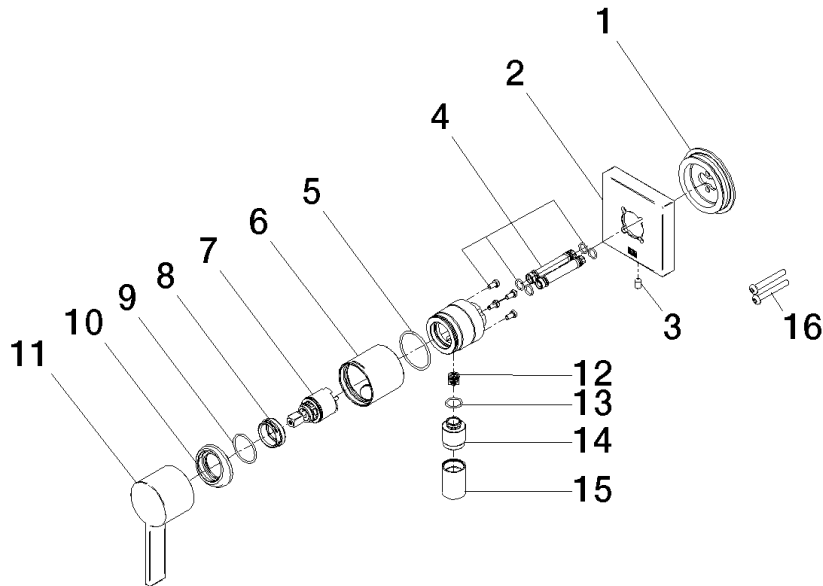
---

LGA\_38

## Concealed single-lever mixer with cover plate with integrated shower connection - Platinum

SERIES SPECIFIC

36 046 970 Product version from 4/1/2024



### Spare parts list

No.	Item Number	Name	Quantity used	Delivery time
5	09 14 10 111 90	seal	1.00	2
4	90 24 01 046 00 90	connection	2.00	2
7	90 15 05 044 00 90	cartridge	1.00	2
1	90 30 11 232 00 90	disc	1.00	2
12	09 23 01 131 90	back-flow preventer	1.00	2
8	09 24 04 266 90	nut	1.00	2
9	09 14 10 120 90	seal	1.00	2
3	09 31 11 144 90	pin	1.00	2
15	90 21 02 069 00-08	cover	1.00	40
13	90 14 10 021 00 90	seal	1.00	2
6	90 18 40 320 00-08	sleeve	1.00	-
Spare part can no longer be ordered, please order the replacement item				
16	90 30 30 229 00 90	screw	2.00	2
10	09 28 30 041-08	cover	1.00	40
2	90 27 97 046 00-08	rosette	1.00	40
14	09 24 03 281-08	nipple	1.00	40
11	09 20 97 063-00	handle	1.00	10