

Concealed single-lever mixer with integrated shower connection - Matte Black

SERIES-VARIOUS

36 050 970

Product version from 10/1/2023



- without rosette
  - WRAS

**Intrinsic protection against back flow.**

Intrinsic protection against back flow.

	Matte Black	36 050 970-33
	Chrome	36 050 970-00
	Brushed Platinum	36 050 970-06
	Platinum	36 050 970-08
Dark Brass matt		36 050 970-16
	Dark Chrome	36 050 970-19
	Light Gold	36 050 970-26
	Brushed Light Gold	36 050 970-27
	Brushed Durabronze (23kt Gold)	36 050 970-28
	Brushed Bronze	36 050 970-42
	Brushed Champagne (22kt Gold)	36 050 970-46
	Champagne (22kt Gold)	36 050 970-47
	Brushed Chrome	36 050 970-93
	Brushed Dark Platinum	36 050 970-99

Required miscellaneous

- Concealed wall mounting -

- max. recess depth 105 mm
  - min. recess depth 80 mm

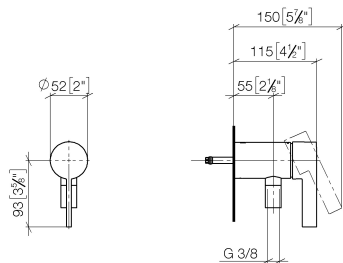
35 050 970 90



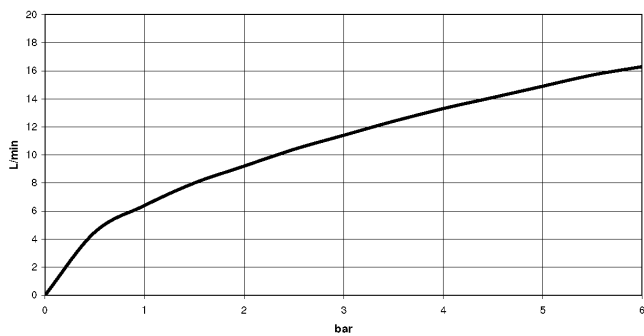
## Concealed single-lever mixer with integrated shower connection - Matte Black SERIES-VARIOUS

36 050 970 Product version from 10/1/2023

mm [inches]



### Flow rate chart



### Codes & Standards

DIN 4109

EN 1717

ISO 3822

Scottish Water  
Byelaws

UK Water Supply  
Regulations

Ü-Zeichen



## Concealed single-lever mixer with integrated shower connection - Matte Black    SERIES-VARIOUS

---

36 050 970    Product version from 10/1/2023

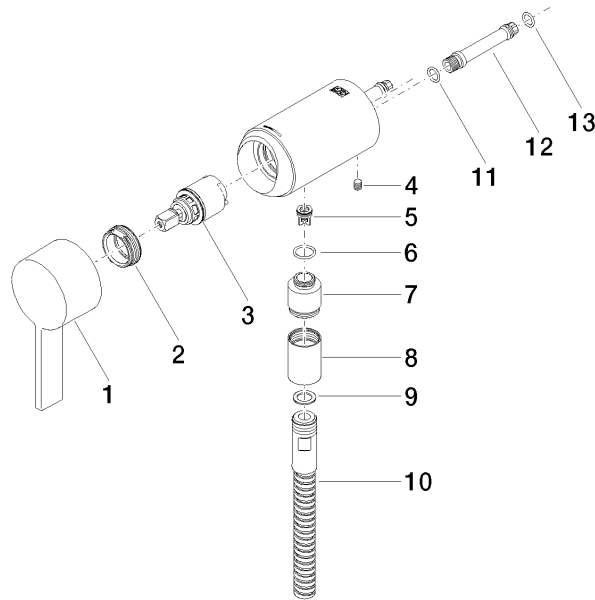
### Certificates and sustainability

---

Belgaqua\_21-025-2    WRAS\_2011    LGA\_29

## Concealed single-lever mixer with integrated shower connection - Matte Black SERIES-VARIOUS

36 050 970 Product version from 10/1/2023



### Spare parts list

No.	Item Number	Name	Quantity used	Delivery time
12	09 18 40 230 90	connection	1.00	2
6	09 14 10 213 90	seal	1.00	2
4	09 31 11 004 90	pin	1.00	60
10	28 322 970-33	Metal shower hose 1/2" x 3/8" x 1750 mm - Matte Black	1.00	2
1	90 20 97 064 00-33	handle	1.00	30
13	09 14 10 061 90	seal	1.00	2
2	09 24 04 266 90	nut	1.00	2
5	09 23 01 131 90	back-flow preventer	1.00	2
7	09 24 03 281-33	nipple	1.00	30
9	90 14 20 026 00 90	seal	1.00	2
11	90 14 10 060 00 90	seal	1.00	2
8	90 21 02 069 00-33	cover	1.00	30
3	90 15 05 044 04 90	cartridge	1.00	2