

Concealed single-lever mixer with diverter - Platinum

SERIES SPECIFIC

36 120 670 Product version up to 3/15/2019



- automatic diverter
- cover plate 150 x 90 mm
- WRAS

	Platinum	36 120 670-08
	Chrome	36 120 670-00
	Brushed Platinum	36 120 670-06
	Dark Chrome	36 120 670-19
	Brushed Light Gold	36 120 670-27
	Brushed Durabrass (23kt Gold)	36 120 670-28
	Matte Black	36 120 670-33
	Brushed Champagne (22kt Gold)	36 120 670-46
	Champagne (22kt Gold)	36 120 670-47
	Brushed Chrome	36 120 670-93
	Brushed Dark Platinum	36 120 670-99

Required miscellaneous



Concealed single-lever mixer with backflow preventor - 35 021 970 90
 • max. recess depth 105 mm
 • min. recess depth 80 mm

Required miscellaneous



xGRID Installation track 555 mm - 12 360 970 90

Required miscellaneous



Concealed single-lever mixer - 35 020 970 90
 • max. recess depth 105 mm
 • min. recess depth 80 mm

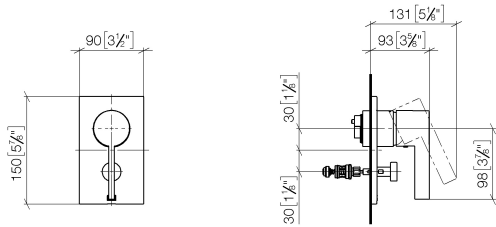
Recommended miscellaneous



xGRID Attachment set for integrating in the dry wall construction - 12 340 970 90

36 120 670 Product version up to 3/15/2019

mm [inches]



Flow rate chart



Codes & Standards

DIN 4109	ISO 3822	Scottish Water Byelaws	UK Water Supply Regulations
----------	----------	---------------------------	--------------------------------

Ü-Zeichen



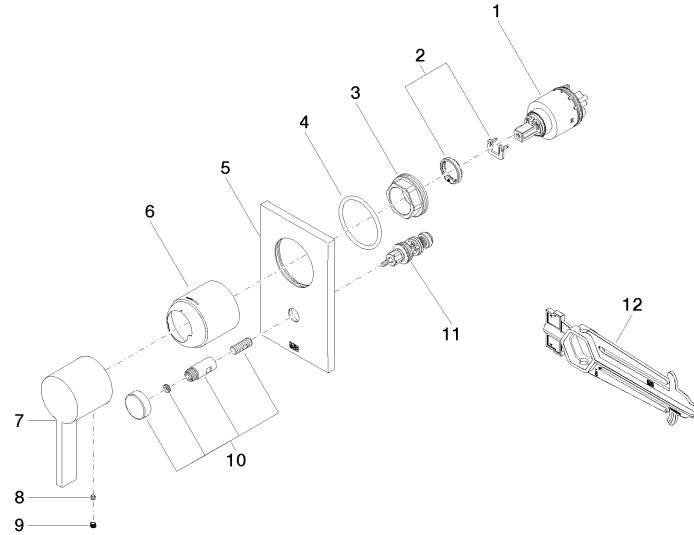
Concealed single-lever mixer with diverter - Platinum

SERIES SPECIFIC

36 120 670 Product version up to 3/15/2019

Certificates and sustainability

LGA_19 WRAS_2207



Spare parts list

No.	Item Number	Name	Quantity used	Delivery time
11	90 21 34 081 00 90	diverter	1.00	2
4	09 14 10 084 90	seal	1.00	2
3	09 24 04 448 90	nut	1.00	2
5	09 11 02 258-08	plate	1.00	40
2	04 28 10 149 00 90	accessories	1.00	2
10	90 31 09 139 00-08	pull-rod	1.00	40
1	90 15 05 038 00 90	cartridge	1.00	60
8	09 31 11 099 90	pin	1.00	2
6	09 11 02 260-08	sleeve	1.00	40
7	09 20 67 007-08	handle	1.00	40
9	90 31 20 109 00 90	plug	1.00	2
12	90 30 09 064 00 90	key	1.00	2