

## VAIA Concealed two-way diverter - Brushed Dark Platinum

36 200 809 Product version from 4/1/2022



- rotary diverter
- rosette Ø 60 mm
- WRAS

	Brushed Dark Platinum	36 200 809-99
	Chrome	36 200 809-00
	Brushed Platinum	36 200 809-06
	Dark Chrome	36 200 809-19
	Brushed Durabronze (23kt Gold)	36 200 809-28
	Brushed Bronze	36 200 809-42
	Brushed Champagne (22kt Gold)	36 200 809-46
	Champagne (22kt Gold)	36 200 809-47

### Required miscellaneous

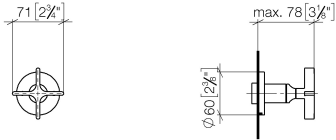


- Concealed two-way diverter -** 35 202 970 90
- max. recess depth mm
  - min. recess depth mm

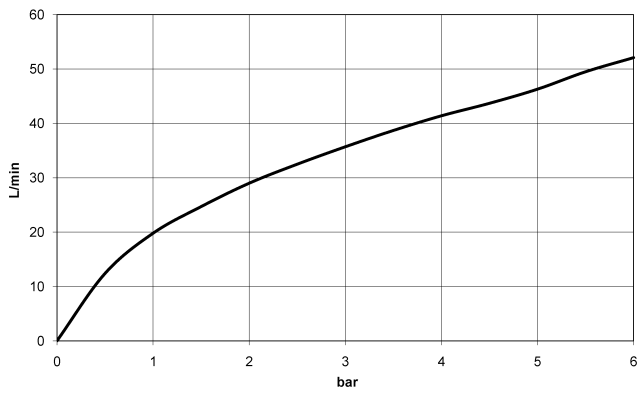
**VAIA Concealed two-way diverter - Brushed Dark Platinum**

36 200 809 Product version from 4/1/2022

mm [inches]



**Flow rate chart**



**Codes & Standards**

DIN 4109

ISO 3822

Scottish Water  
Byelaws

UK Water Supply  
Regulations

**Ü-Zeichen**



## VAIA Concealed two-way diverter - Brushed Dark Platinum

---

36 200 809 Product version from 4/1/2022

### Certificates

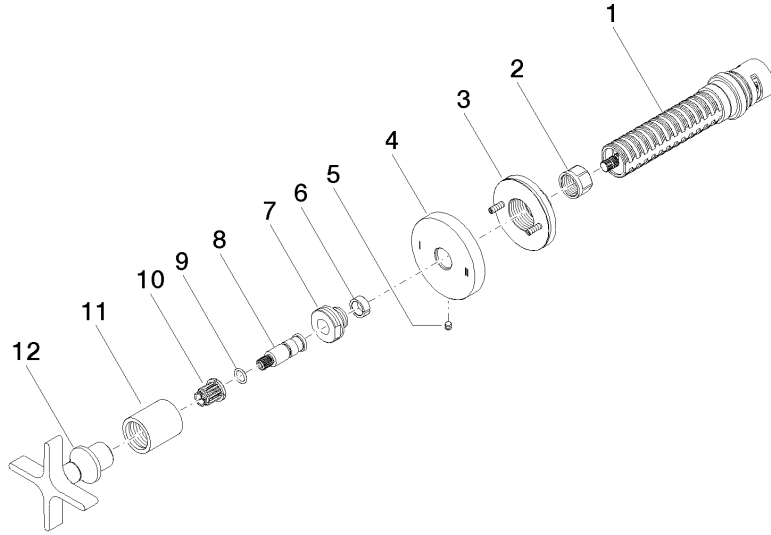
---

LGA\_38

WRAS\_2307

**VAIA Concealed two-way diverter - Brushed Dark Platinum**

36 200 809 Product version from 4/1/2022



**Spare parts list**

No.	Item Number	Name	Quantity used	Delivery time
1	90 90 03 304 10 90	diverter	1	2
2	90 23 30 023 00 90	nut	1	2
3	90 21 02 181 00 90	disc	1	2
4	09 27 89 118-99	rosette	1	20
5	09 31 11 294 90	pin	1	2
6	90 14 15 020 03 90	ring	1	2
7	09 24 05 002 90	nipple	1	2
8	09 29 06 022 90	spindle	1	2
9	90 14 10 060 00 90	seal	1	2
10	90 12 12 002 00 90	fixing cap	1	2
11	09 21 02 070-99	cover	1	20
12	90 20 80 014 01-99	handle	1	20