

SYMETRICS Concealed two-way diverter - Brushed Durabronss (23kt Gold)

SYMETRICS

36 200 985 Product version from 4/1/2022



- rotary diverter
- rosette 60 x 60 mm
- WRAS

| | | |
|--|--------------------------------|---------------|
|  | Brushed Durabronss (23kt Gold) | 36 200 985-28 |
|  | Chrome | 36 200 985-00 |
|  | Brushed Platinum | 36 200 985-06 |
|  | Dark Chrome | 36 200 985-19 |
|  | Brushed Light Gold | 36 200 985-27 |
|  | Matte Black | 36 200 985-33 |
|  | Brushed Champagne (22kt Gold) | 36 200 985-46 |
|  | Champagne (22kt Gold) | 36 200 985-47 |
|  | Brushed Chrome | 36 200 985-93 |
|  | Brushed Dark Platinum | 36 200 985-99 |

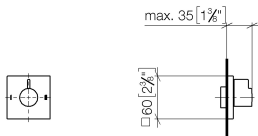
Required miscellaneous



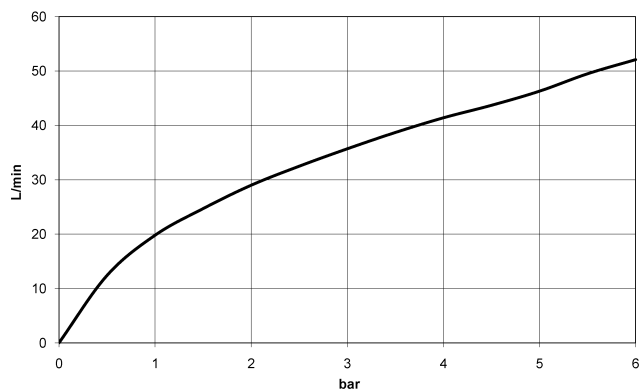
- Concealed two-way diverter -** 35 202 970 90
- max. recess depth 160 mm
 - min. recess depth 85 mm

36 200 985 Product version from 4/1/2022

mm [inches]



Flow rate chart



Codes & Standards

DIN 4109

ISO 3822

Scottish Water
Byelaws

UK Water Supply
Regulations

Ü-Zeichen



SYMETRICS Concealed two-way diverter - Brushed Durabron (23kt Gold)

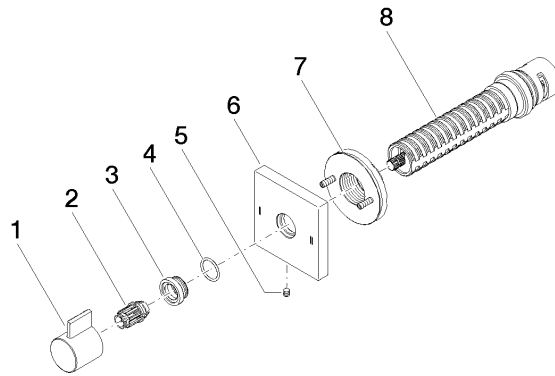
SYMETRICS

36 200 985 Product version from 4/1/2022

Certificates and sustainability

LGA_38

WRAS_2307



Spare parts list

| No. | Item Number | Name | Quantity used | Delivery time |
|-----|--------------------|------------|---------------|---------------|
| 2 | 09 12 12 005 90 | fixing cap | 1.00 | 2 |
| 3 | 09 12 12 043-28 | base | 1.00 | 20 |
| 7 | 90 21 02 181 00 90 | disc | 1.00 | 2 |
| 8 | 90 90 03 304 10 90 | diverter | 1.00 | 2 |
| 4 | 09 14 10 017 90 | seal | 1.00 | 2 |
| 6 | 09 27 98 037-28 | rosette | 1.00 | 20 |
| 5 | 09 31 11 294 90 | pin | 1.00 | 2 |
| 1 | 09 20 98 002-28 | handle | 1.00 | 20 |