



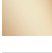
TARA Concealed three-way diverter - Brushed Chrome

TARA

36 210 882 Product version from 4/1/2022



- rotary diverter
- rosette 60 mm
- WRAS

| | | |
|---|-------------------------------|---------------|
|  | Brushed Chrome | 36 210 882-93 |
|  | Chrome | 36 210 882-00 |
|  | Brushed Platinum | 36 210 882-06 |
|  | Platinum | 36 210 882-08 |
|  | Dark Chrome | 36 210 882-19 |
|  | Brushed Durabrass (23kt Gold) | 36 210 882-28 |
|  | Matte Black | 36 210 882-33 |
|  | Brushed Dark Brass | 36 210 882-39 |
|  | Brushed Bronze | 36 210 882-42 |
|  | Brushed Champagne (22kt Gold) | 36 210 882-46 |
|  | Champagne (22kt Gold) | 36 210 882-47 |
|  | Brushed Dark Platinum | 36 210 882-99 |

Required miscellaneous



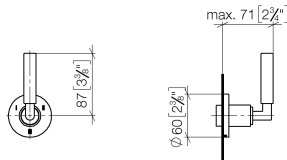
- Concealed three-way diverter -

•max. recess depth 160 mm

•min. recess depth 85 mm

35 203 970 90

mm [inches]



Flow rate chart



Codes & Standards

DIN 4109

ISO 3822

Scottish Water
Byelaws

UK Water Supply
Regulations

Ü-Zeichen



TARA Concealed three-way diverter - Brushed Chrome

TARA

36 210 882 Product version from 4/1/2022

Certificates and sustainability

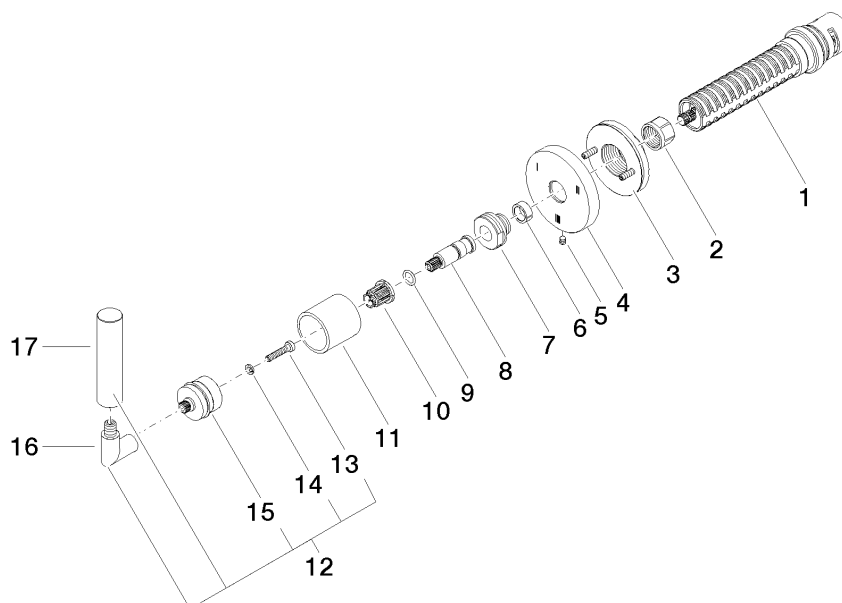
LGA_38

WRAS_2307

TARA Concealed three-way diverter - Brushed Chrome

TARA

36 210 882 Product version from 4/1/2022



Spare parts list

| No. | Item Number | Name | Quantity used | Delivery time |
|--|--------------------|------------|---------------|---------------|
| 17 | 09 20 88 052-93 | handle | 1.00 | 20 |
| 7 | 09 24 05 002 90 | nipple | 1.00 | 2 |
| 11 | 09 21 02 144-93 | sleeve | 1.00 | 20 |
| 10 | 90 12 12 002 00 90 | fixing cap | 1.00 | 2 |
| 15 | 90 12 12 219 00-93 | base | 1.00 | 20 |
| 5 | 09 31 11 294 90 | pin | 1.00 | 2 |
| 8 | 09 29 06 022 90 | spindle | 1.00 | 2 |
| 16 | 04 18 20 022 00-93 | angle | 1.00 | - |
| Spare part can no longer be ordered, please order the replacement item | | | | |
| 1 | 90 90 03 303 10 90 | diverter | 1.00 | 2 |
| 4 | 09 27 89 117-93 | rosette | 1.00 | 60 |
| 3 | 90 21 02 181 00 90 | disc | 1.00 | 2 |
| 12 | 04 20 88 052 10-93 | handle | 1.00 | 60 |
| 9 | 90 14 10 060 00 90 | seal | 1.00 | 2 |
| 14 | 90 30 11 029 00 90 | disc | 1.00 | 2 |
| 13 | 90 30 30 075 00 90 | screw | 1.00 | 2 |
| 6 | 90 14 15 020 03 90 | ring | 1.00 | 2 |
| 2 | 90 23 30 023 00 90 | nut | 1.00 | 2 |