

WATER CURVE Concealed body spray - Brushed Light Gold

SERIES-VARIOUS

36 514 979 Product version from 4/1/2024



- AQUAPRESSURE FLOW, max. flow rate 10 l/min (at 3 bar)
- water jet adjustable
- Function from: l/min

Technical data:

- cover plate 120 x 60 mm
- 1/2" connection

| | | |
|---|-------------------------------|---------------|
|  | Brushed Light Gold | 36 514 979-27 |
|  | Chrome | 36 514 979-00 |
|  | Brushed Platinum | 36 514 979-06 |
|  | Platinum | 36 514 979-08 |
|  | Dark Chrome | 36 514 979-19 |
|  | Light Gold | 36 514 979-26 |
|  | Brushed Durabrass (23kt Gold) | 36 514 979-28 |
|  | Matte Black | 36 514 979-33 |
|  | Brushed Dark Brass | 36 514 979-39 |
|  | Brushed Bronze | 36 514 979-42 |
|  | Brushed Champagne (22kt Gold) | 36 514 979-46 |
|  | Champagne (22kt Gold) | 36 514 979-47 |
|  | Brushed Chrome | 36 514 979-93 |
|  | Brushed Dark Platinum | 36 514 979-99 |

Recommended miscellaneous



- Concealed wall elbow -

•min. recess depth 90 mm

•max. recess depth 163 mm

35 085 970 90



Flow rate chart



Trajectory diagram



Codes & Standards

DIN 4109

ISO 3822

Scottish Water
Byelaws

UK Water Supply
Regulations

Ü-Zeichen



WATER CURVE Concealed body spray - Brushed Light Gold

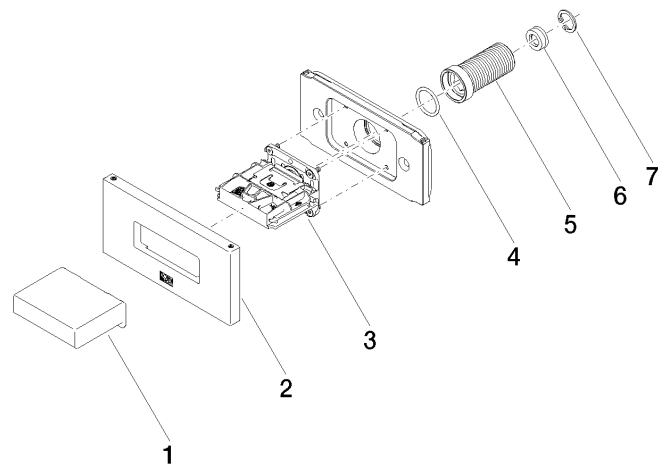
SERIES-VARIOUS

36 514 979 Product version from 4/1/2024

Certificates and sustainability

LGA_29

WRAS_250602



Spare parts list

| No. | Item Number | Name | Quantity used | Delivery time |
|-----|--------------------|--------------|---------------|---------------|
| 5 | 09 24 04 336 90 | nipple | 1.00 | 2 |
| 1 | 09 17 01 230-27 | casing | 1.00 | 60 |
| 3 | 90 29 03 088 00 90 | insert | 1.00 | 2 |
| 4 | 90 14 10 010 00 90 | seal | 1.00 | 2 |
| 2 | 90 27 97 041 00-27 | rosette | 1.00 | 30 |
| 6 | 09 23 01 134 90 | flow reducer | 1.00 | 2 |
| 7 | 09 16 01 014 90 | ring | 1.00 | 2 |