

**META Wall-mounted single-lever basin mixer without pop-up waste - Brushed Chrome**

META

36 805 660



- 185mm projection
- fixed spout
- circular, air-enriched flow
- hole diameter 35 mm
- rosette Ø 60 mm
- max. flow 5.7 l/min
- lead-free
- with single-point mounting
- This product can help a building meet the requirements of Green Building Rating Systems, e.g. LEED®, BREEAM®, DGNB
- WRAS 240102017

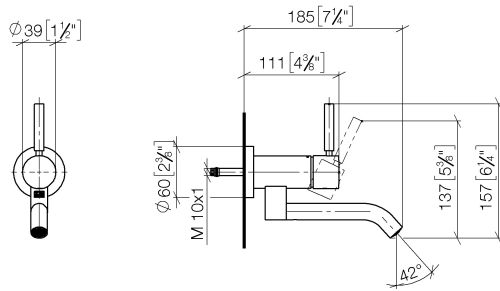
|  |                               |               |
|--|-------------------------------|---------------|
|    | Brushed Chrome                | 36 805 660-93 |
|    | Chrome                        | 36 805 660-00 |
|    | Brushed Platinum              | 36 805 660-06 |
|    | Dark Chrome                   | 36 805 660-19 |
|    | Light Gold                    | 36 805 660-26 |
|    | Brushed Light Gold            | 36 805 660-27 |
|    | Matte Black                   | 36 805 660-33 |
|    | Brushed Bronze                | 36 805 660-42 |
|    | Brushed Champagne (22kt Gold) | 36 805 660-46 |
|   | Champagne (22kt Gold)         | 36 805 660-47 |
|  | Brushed Dark Platinum         | 36 805 660-99 |

**Required miscellaneous**

- Concealed wall mounting -** 35 050 970 90
- max. recess depth 105 mm
  - min. recess depth 80 mm



36 805 660  
mm [inches]



**Flow rate chart**



**Codes & Standards**

DIN 4109

ISO 3822

Scottish Water  
Byelaws

UK Water Supply  
Regulations

**Ü-Zeichen**



META Wall-mounted single-lever basin mixer without pop-up waste - Brushed  
Chrome

---

META

36 805 660  
Certificates

---

WRAS\_240102      LGA\_38

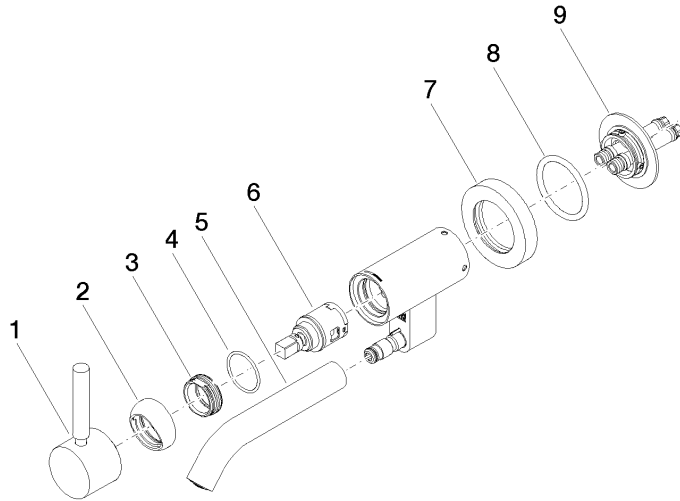


# META Wall-mounted single-lever basin mixer without pop-up waste - Brushed Chrome

META

36 805 660

**Product version from 5/1/2022**





**META Wall-mounted single-lever basin mixer without pop-up waste - Brushed Chrome**

META

36 805 660

**Spare parts list**

**Product version from 5/1/2022**

| No. | Item Number        | Name   | Quantity used | Delivery time |
|-----|--------------------|--------|---------------|---------------|
|     | 90 20 66 030 00-93 | handle | 9             | 20            |