








LISSÉ Wall-mounted single-lever basin mixer without pop-up waste - Brushed Platinum

LISSÉ

36 860 845	Product version up to 4/1/2024		
	<ul style="list-style-type: none"> <li>170mm projection</li> <li>fixed spout</li> <li>circular, air-enriched flow</li> <li>hole diameter spout 37 mm</li> <li>hole diameter single-lever mixer 57 mm</li> <li>rosette 78 x 78 mm</li> <li>max. flow 5.7 l/min</li> <li>lead-free</li> <li>This product can help a building meet the requirements of Green Building Rating Systems, e.g. LEED®, BREEAM®, DGNB</li> <li>WRAS</li> </ul>		<div>Brushed Platinum</div> <div>36 860 845-06</div>
			<div>Chrome</div> <div>36 860 845-00</div>
			<div>Dark Chrome</div> <div>36 860 845-19</div>
			<div>Brushed Light Gold</div> <div>36 860 845-27</div>
			<div>Matte Black</div> <div>36 860 845-33</div>
			<div>Brushed Chrome</div> <div>36 860 845-93</div>
			<div>Brushed Dark Platinum</div> <div>36 860 845-99</div>

Required miscellaneous

	<div> <div> <div></div> <div></div> </div> <div> <div></div> <div></div> </div> </div>	<div> <div>Concealed wall-mounted single-lever mixer -</div> <div> <ul style="list-style-type: none"> <li>max. recess depth 95 mm</li> <li>min. recess depth 80 mm</li> <li>mixer can be placed above, to the left or to the right of the spout.</li> </ul> </div> </div>	35 860 970 90
--	--	---	---------------

Required miscellaneous

	<div> <div> <div></div> <div></div> </div> <div> <div></div> <div></div> </div> </div>	<div> <div>Concealed wall-mounted single-lever mixer mixer on right -</div> <div> <ul style="list-style-type: none"> <li>NOTE:Not suitable for concealed installation.Connection by means of angle valves, mounted with screws to back wall.</li> </ul> </div> </div>	35 816 970 90
--	--	---	---------------

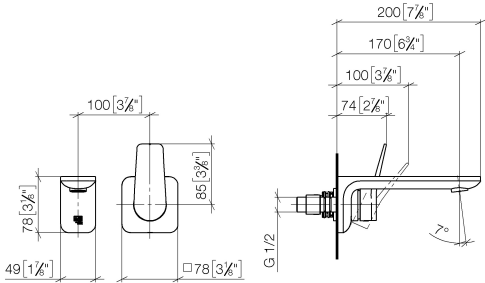


# LISSÉ Wall-mounted single-lever basin mixer without pop-up waste - Brushed Platinum

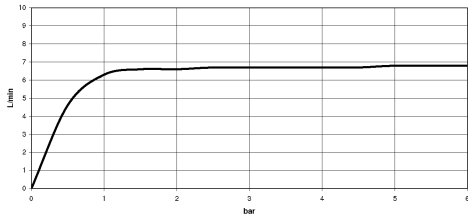
LISSÉ

36 860 845    Product version up to 4/1/2024

mm [inches]



## Flow rate chart



## Codes & Standards

ASME A112.18.1	cUPC	DIN 4109	EN 817
EPA WaterSense	ISO 3822	NSF372	NSF61
Scottish Water Byelaws	UK Water Supply Regulations	Ü-Zeichen	WaterSense





LISSE Wall-mounted single-lever basin mixer without pop-up waste - Brushed Platinum

LISSE

36 860 845 Product version up to 4/1/2024

Certificates and sustainability

IAPMO_N-4976	DVGW_DW-6512DN0	IAPMO_6397	LGA_29	WRAS_2107
IAPMO_4976 (	IAPMO_8834			

## LISSÉ Wall-mounted single-lever basin mixer without pop-up waste - Brushed Platinum

LISSÉ

36 860 845 Product version up to 4/1/2024



### Spare parts list

No.	Item Number	Name	Quantity used	Delivery time
1	09 24 03 072 10 90	nipple	1.00	2
11	90 15 05 064 01 90	cartridge	1.00	2
2	90 24 03 108 00 90	nipple set	1.00	2
7	09 20 84 021-06	handle	1.00	10
8	09 11 02 288-06	cover	1.00	10
4	90 11 84 021 00-06	spout	1.00	10
5	90 31 20 087 00-06	plug	1.00	10
6	90 31 11 063 00 90	pin	1.00	2
12	90 30 09 064 00 90	key	1.00	2
3	90 31 11 004 00 90	pin	1.00	2
10	90 14 10 049 00 90	seal	1.00	2
9	90 27 84 020 00-06	rosette	1.00	10