





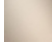




13 801 809



- Ausladung 200 mm
- runder Normalstrahl
- Bohrungsdurchmesser 37 mm
- Rosette Ø 60 mm
- Anschluss 1/2"
- Durchfluss max. 21,5 l/min bei 3 bar Fließdruck

	Platin	13 801 809-08
	Chrom	13 801 809-00
	Platin gebürstet	13 801 809-06
	Dark Chrome	13 801 809-19
	Messing gebürstet (23kt Gold)	13 801 809-28
	Bronze gebürstet	13 801 809-42
	Champagne gebürstet (22kt Gold)	13 801 809-46
	Champagne (22kt Gold)	13 801 809-47
	Dark Platinum gebürstet	13 801 809-99

Empfohlenes Zubehör



UP-Wandwinkel -

35 085 970 90

- Max. Einbautiefe 163 mm
- Min. Einbautiefe 90 mm

13 801 809

mm [inches]



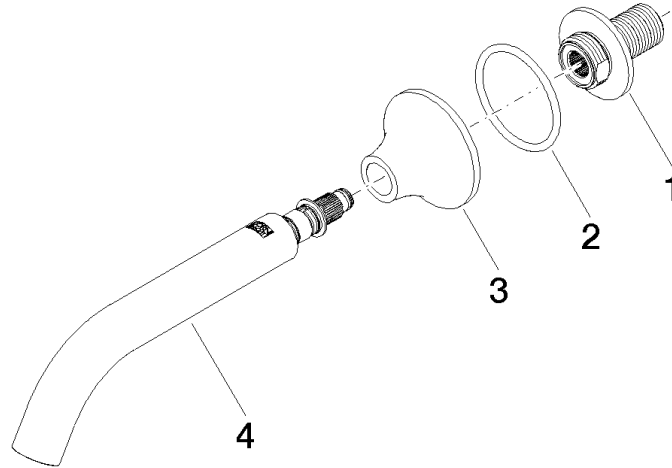
Durchflussdiagramm



Zertifikate

WRAS_2306002. LGA_29290.

13 801 809



Ersatzteilstückliste

Nr.	Artikelnummer	Benennung	Verbaumenge	Lieferzeit
1	09 24 03 269 90	Nippel	1	2
2	09 14 10 084 90	Dichtung	1	2
3	09 27 80 014-08	Rosette	1	40
4	90 28 22 315 00-08	Auslauf	1	40