



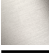


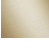


## MEM Bath cascade spout without diverter for deck mounting - Brushed Durabron (23kt Gold)

MEM

13 630 740



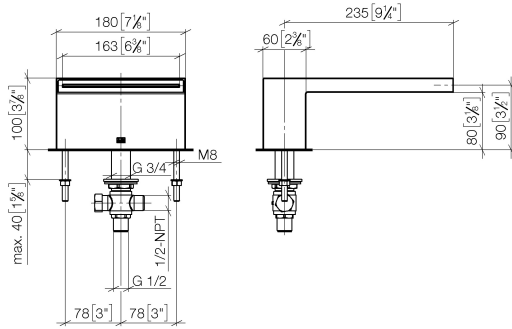
- 235mm projection
- cascade
- height of mixer 100 mm
- height up to aerator 80 mm
- hole diameter 32 mm
- 1/2" connection
- max. flow 26.5 l/min at 3 bar flow pressure
- WRAS 240502023, 1809016

	Brushed Durabron (23kt Gold)	13 630 740-28
	Chrome	13 630 740-00
	Brushed Platinum	13 630 740-06
	Platinum	13 630 740-08
	Dark Chrome	13 630 740-19
	Brushed Champagne (22kt Gold)	13 630 740-46
	Champagne (22kt Gold)	13 630 740-47
	Brushed Dark Platinum	13 630 740-99

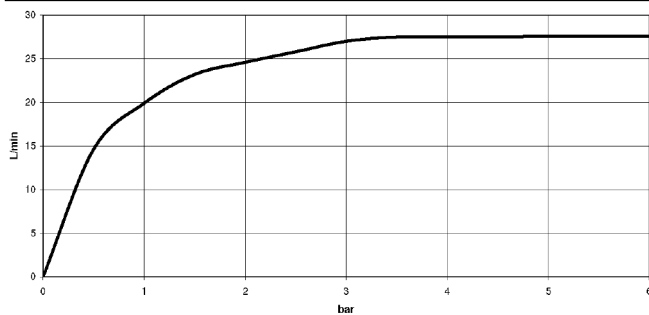
# MEM Bath cascade spout without diverter for deck mounting - Brushed Durabron (23kt Gold)

MEM

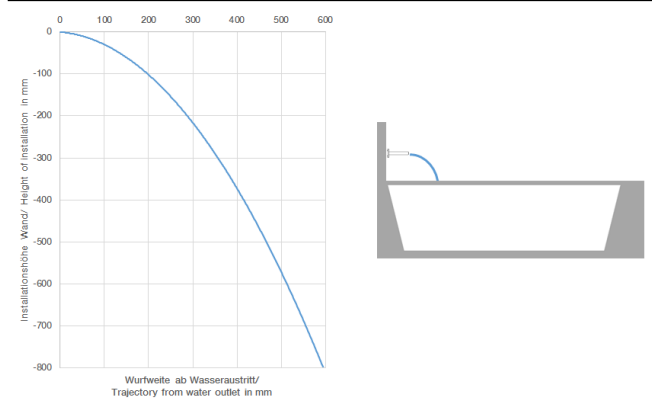
13 630 740  
mm [inches]



Flow rate chart



Trajectory diagram



## Codes & Standards

DIN 4109

ISO 3822

Scottish Water  
Byelaws

UK Water Supply  
Regulations

Ü-Zeichen



## MEM Bath cascade spout without diverter for deck mounting - Brushed Durabross (23kt Gold)

---

MEM

13 630 740

Certificates

---

LGA\_19

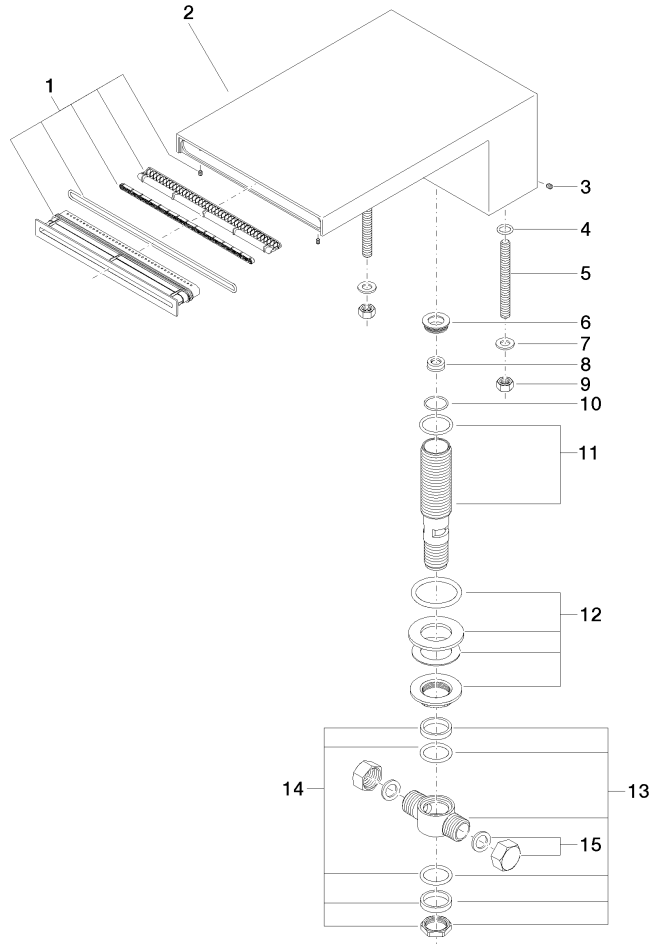
WRAS\_240502

# MEM Bath cascade spout without diverter for deck mounting - Brushed Durabronz (23kt Gold)

MEM

13 630 740

Parts for other  
finishes can be found  
here: [Chrome](#)





MEM Bath cascade spout without diverter for deck mounting - Brushed  
Durabrass (23kt Gold)

MEM

13 630 740

Spare parts list

No.	Item Number	Name	Quantity used	Delivery time
	90 29 03 059 00 90	insert	20	2