



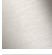




LISSÉ Bath spout for wall mounting - Brushed Chrome

LISSÉ

13 801 845 Product version from 3/9/2016



- 210mm projection
- circular normal flow
- hole diameter 37 mm
- 1/2" connection
- plug-link mounting
- max. flow 21.5 l/min at 3 bar flow pressure
- WRAS

	Brushed Chrome	13 801 845-93
	Chrome	13 801 845-00
	Brushed Platinum	13 801 845-06
	Dark Chrome	13 801 845-19
	Brushed Light Gold	13 801 845-27
	Matte Black	13 801 845-33
	Brushed Dark Platinum	13 801 845-99

13 801 845 Product version from 3/9/2016

mm [inches]



Flow rate chart



Codes & Standards

ASME A112.18.1 cUPC DIN 4109 ISO 3822

Scottish Water Byelaws UK Water Supply Regulations Ü-Zeichen



LISSE Bath spout for wall mounting - Brushed Chrome

LISSE

13 801 845 Product version from 3/9/2016

Certificates and sustainability

IAPMO_4976

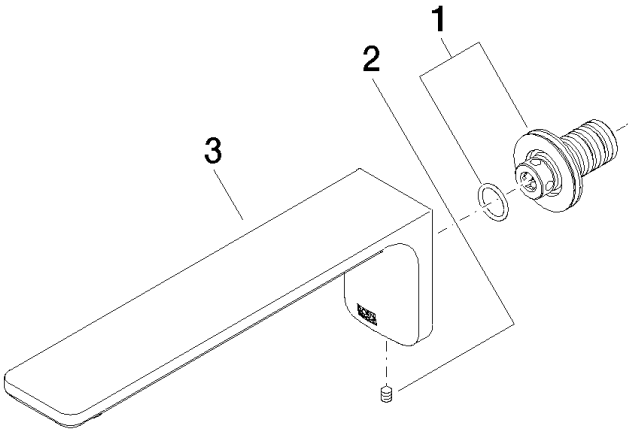
LGA_29

WRAS_2207

Parts for other

finishes can be found

here: [Chrome](#)



Spare parts list

No.	Item Number	Name	Quantity used	Delivery time
3	90 11 84 014 02-93	spout	1.00	20
1	90 24 03 108 00 90	nipple set	1.00	2
2	90 31 11 004 00 90	pin	1.00	2