

## Deck valve clockwise closing cold - Brushed Champagne (22kt Gold)

CL.1

20 000 740



- hole diameter 32 mm
- handle Ø 60mm
- without rosette
- with cold marking
- WRAS 2103001

Fits: CL.1, CYO

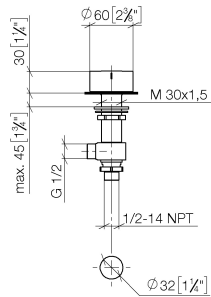
	Brushed Champagne (22kt Gold)	20 000 740-46
	Chrome	20 000 740-00
	Brushed Platinum	20 000 740-06
	Platinum	20 000 740-08
	Dark Chrome	20 000 740-19
	Brushed Durabronze (23kt Gold)	20 000 740-28
	Matte Black	20 000 740-33
	Champagne (22kt Gold)	20 000 740-47
	Brushed Dark Platinum	20 000 740-99

## Deck valve clockwise closing cold - Brushed Champagne (22kt Gold)

CL.1

20 000 740

mm [inches]



### Flow rate chart



### Codes & Standards

Scottish Water  
Byelaws

UK Water Supply  
Regulations



## Deck valve clockwise closing cold - Brushed Champagne (22kt Gold)

---

CL.1

20 000 740

Certificates

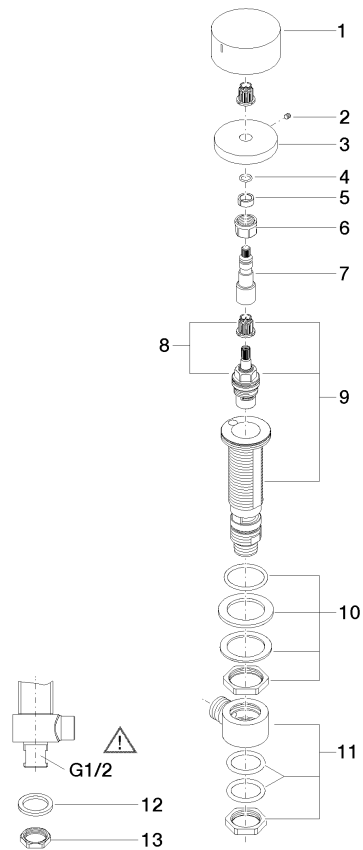
---

WRAS\_2103

20 000 740

**Product version from 4/1/2023**

Parts for other  
finishes can be found  
here: [Chrome](#)





## Deck valve clockwise closing cold - Brushed Champagne (22kt Gold)

CL.1

20 000 740

### Spare parts list

#### Product version from 4/1/2023

No.	Item Number	Name	Quantity used	Delivery time
	09 20 74 005-46	handle ( cold )	13	60