

VAIA Three-hole basin mixer with pop-up waste - Chrome


VAIA

20 705 819 Product version from 4/1/2025



- 165mm projection
- pivotable spout 360°
- circular, air-enriched flow
- height of mixer 144 mm
- height up to aerator 90 mm
- hole diameter valve 32 mm
- hole diameter spout 35 mm
- rosette Ø 60 mm
- max. flow 5.7 l/min
- lead-free
- This product can help a building meet the requirements of Green Building Rating Systems, e.g. LEED®, BREEAM®, DGNB
- WRAS

Only suitable for basins with an overflow.

	Chrome	20 705 819-00
	Brushed Platinum	20 705 819-06
	Platinum	20 705 819-08
	Dark Chrome	20 705 819-19
	Brushed Durabronze (23kt Gold)	20 705 819-28
	Brushed Dark Brass	20 705 819-39
	Brushed Bronze	20 705 819-42
	Brushed Champagne (22kt Gold)	20 705 819-46
	Champagne (22kt Gold)	20 705 819-47
	Brushed Dark Platinum	20 705 819-99

Recommended miscellaneous



High pressure hoses -

- 2x 3/8" x 1/2" x 500mm high pressure hose

12 506 970 90

20 705 819 Product version from 4/1/2025

mm [inches]



Flow rate chart



Codes & Standards

DIN 4109

Executive Order
no. 1007

ISO 3822

Scottish Water
Byelaws

UK Water Supply
Regulations

Ü-Zeichen



VAIA Three-hole basin mixer with pop-up waste - Chrome

VAIA

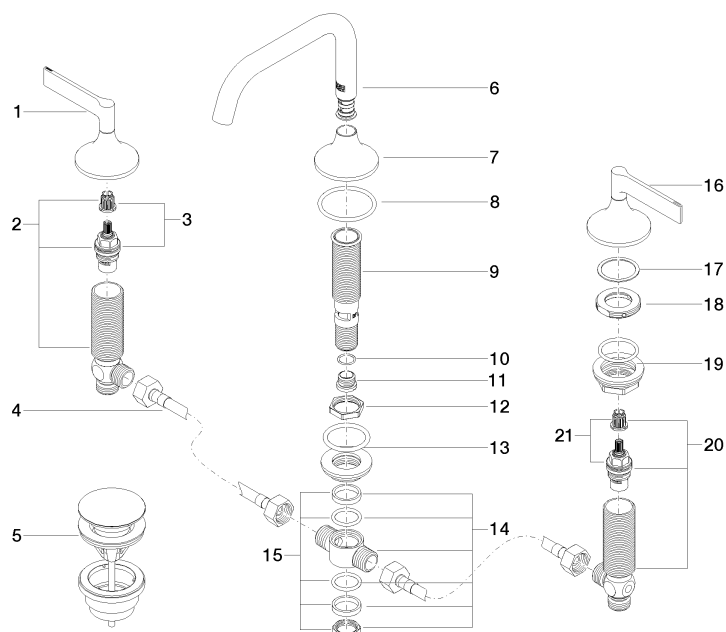
20 705 819 Product version from 4/1/2025

Certificates and sustainability

GDV_0400

LGA_38

WRAS_2312



Spare parts list

No.	Item Number	Name	Quantity used	Delivery time
7	09 27 80 011-00	rosette	1.00	10
13	04 23 10 004 04 90	fixing set	1.00	2
20	04 17 11 055 50 90	side panel	1.00	2
5	10 125 970-00	Basin Waste with push fastening 1 1/4" - Chrome	1.00	2
21	90 90 03 150 00 90	top	1.00	2
4	04 30 04 096 00 90	hose	2.00	2
12	09 23 10 127 90	nut	1.00	2
1	90 20 80 013 00-00	handle (hot)	1.00	10
9	90 30 01 033 00 90	base	1.00	2
18	09 24 01 028 90	ring	2.00	2
15	90 23 10 012 00 90	gasket kit	1.00	2
19	04 23 10 032 78 90	fixing set	2.00	2
10	09 14 10 017 90	seal	1.00	2
16	90 20 80 012 00-00	handle (cold)	1.00	10
6	90 28 22 368 00-00	spout	1.00	10
3	90 90 03 151 00 90	top	1.00	2
11	09 24 04 021 10 90	nipple	1.00	2
17	09 28 10 003 90	ring	2.00	2
2	04 17 11 055 51 90	side panel	1.00	2
8	09 14 10 084 90	seal	1.00	2
14	90 17 11 020 10 90	distributor	1.00	2