

## TARA Three-hole basin mixer with pop-up waste - Chrome

TARA

20 705 882 Product version from 4/1/2024



- 166mm projection
- pivotable spout 360°
- circular, air-enriched flow
- height of mixer 145 mm
- height up to aerator 65 mm
- hole diameter valve 32 mm
- hole diameter spout 35 mm
- rosette Ø 55 mm
- 2x screw-in M 10 x 1 pressure hose, leak-tested
- max. flow 5.7 l/min
- lead-free
- This product can help a building meet the requirements of Green Building Rating Systems, e.g. LEED®, BREEAM®, DGNB
- WRAS

Only suitable for basins with an overflow.

	Chrome	20 705 882-00
	Brushed Platinum	20 705 882-06
	Platinum	20 705 882-08
	Dark Chrome	20 705 882-19
	Brushed Durabronze (23kt Gold)	20 705 882-28
	Matte Black	20 705 882-33
	Brushed Dark Brass	20 705 882-39
	Brushed Bronze	20 705 882-42
	Brushed Champagne (22kt Gold)	20 705 882-46
	Champagne (22kt Gold)	20 705 882-47
	Brushed Chrome	20 705 882-93
	Brushed Dark Platinum	20 705 882-99



### Flow rate chart



### Codes & Standards

DIN 4109

Executive Order  
no. 1007

ISO 3822

Scottish Water  
Byelaws

UK Water Supply  
Regulations

Ü-Zeichen



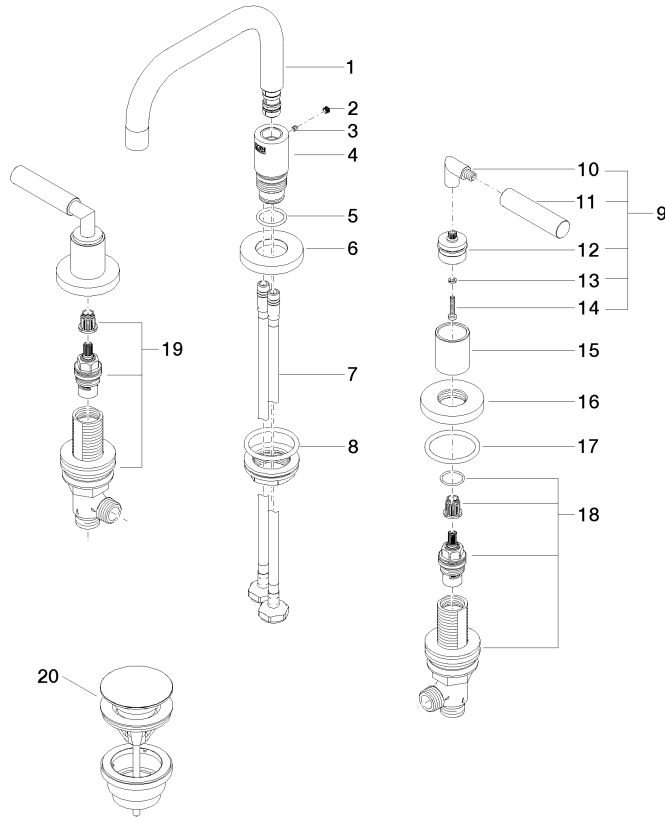
TARA Three-hole basin mixer with pop-up waste - Chrome

TARA

20 705 882 Product version from 4/1/2024

Certificates and sustainability

LGA_38	GDV_0400	WRAS_2303
--------	----------	-----------



# TARA Three-hole basin mixer with pop-up waste - Chrome

TARA

20 705 882 Product version from 4/1/2024

## Spare parts list

No.	Item Number	Name	Quantity used	Delivery time
3	09 31 11 099 90	pin	1.00	2
1	90 28 22 370 00-00	spout	1.00	10
2	90 31 20 109 00 90	plug	1.00	2
18	90 17 11 040 50 90	side panel	1.00	2
17	90 14 10 043 00 90	seal	2.00	2
4	90 11 10 102 00-00	connection	1.00	-
Spare part can no longer be ordered, please order the replacement item				
14	90 30 30 075 00 90	screw	2.00	2
6	09 28 10 140-00	ring	1.00	10
15	09 21 02 140-00	sleeve	2.00	10
12	90 12 12 219 00-00	base	2.00	10
8	04 23 10 009 02 90	fixing set	1.00	2
7	04 30 04 019 00 90	hose	2.00	2
16	09 27 89 105-00	rosette	2.00	10
20	10 125 970-00	Basin Waste with push fastening 1 1/4" - Chrome	1.00	2
9	04 20 88 052 10-00	handle	2.00	10
19	90 17 11 040 51 90	side panel	1.00	2
11	09 20 88 052-00	handle	2.00	10
13	90 30 11 029 00 90	disc	2.00	2
5	09 14 10 015 90	seal	1.00	2
10	04 18 20 022 00-00	angle	2.00	10