

## LISSÉ Three-hole basin mixer with pop-up waste - Brushed Chrome



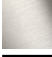




LISSÉ

20 713 845 Product version from 3/9/2016



- 130mm projection
- fixed spout
- circular, air-enriched flow
- height of mixer 95 mm
- height up to aerator 75 mm
- hole diameter valve 32 mm
- hole diameter spout 35 mm
- rosette Ø 48 mm
- max. flow 5.7 l/min
- lead-free
- WRAS
- This product can help a building meet the requirements of Green Building Rating Systems, e.g. LEED®, BREEAM®, DGNB

Only suitable for basins with an overflow.

	Brushed Chrome	20 713 845-93
	Chrome	20 713 845-00
	Brushed Platinum	20 713 845-06
	Dark Chrome	20 713 845-19
	Brushed Light Gold	20 713 845-27
	Matte Black	20 713 845-33
	Brushed Dark Platinum	20 713 845-99

20 713 845 Product version from 3/9/2016



**Flow rate chart**



**Codes & Standards**

DIN 4109

ISO 3822

Scottish Water  
Byelaws

UK Water Supply  
Regulations

Ü-Zeichen



## LISSE Three-hole basin mixer with pop-up waste - Brushed Chrome

---

LISSE

20 713 845 Product version from 3/9/2016

Certificates and sustainability

---

WRAS\_2210

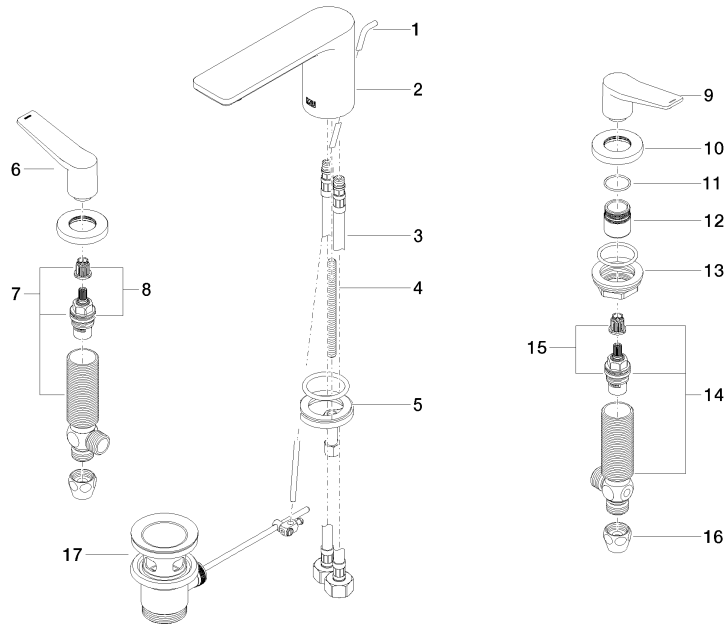
LGA\_29

## LISSE Three-hole basin mixer with pop-up waste - Brushed Chrome

LISSE

20 713 845 Product version from 3/9/2016

Parts for other  
finishes can be found  
here: [Chrome](#)



### Spare parts list

No.	Item Number	Name	Quantity used	Delivery time
5	04 30 11 038 75 90	fixing set	1.00	2
8	90 90 03 151 00 90	top	1.00	2
4	09 31 11 012 90	pin	1.00	2
9	09 20 84 024-93	handle ( cold )	1.00	20
13	04 23 10 032 78 90	fixing set	2.00	2
3	04 30 04 019 00 90	hose	2.00	2
1	09 31 09 120-93	pull-rod	1.00	20
10	09 27 84 023-93	rosette	2.00	20
11	09 14 10 098 90	seal	2.00	2
7	04 17 11 055 51 90	side panel	1.00	2
12	09 18 40 206 90	ring	2.00	2
14	04 17 11 055 50 90	side panel	1.00	2
6	09 20 84 025-93	handle ( hot )	1.00	20
2	90 11 84 013 00-93	spout	1.00	20
15	90 90 03 150 00 90	top	1.00	2
16	90 23 30 040 00-93	threaded connector	2.00	20
17	90 11 01 001 00-93	pop-up waste	1.00	20