

TARA Three-hole mixer - Brushed Dark Platinum

TARA

20 815 892



- 235mm projection
- pivotable spout 360°
- air-enriched flow
- height of mixer 370 mm
- height up to aerator 212 mm
- hole diameter spout 35 mm
- hole diameter valve 32 mm
- max. flow 7 l/min at 3 bar flow pressure
- lead-free
- This product can help a building meet the requirements of Green Building Rating Systems, e.g. LEED®, BREEAM®, DGNB
- WRAS 2107052

| | | |
|--|-------------------------------|---------------|
|  | Brushed Dark Platinum | 20 815 892-99 |
|  | Chrome | 20 815 892-00 |
|  | Brushed Platinum | 20 815 892-06 |
|  | Platinum | 20 815 892-08 |
|  | Durabrand (23kt Gold) | 20 815 892-09 |
|  | Dark Chrome | 20 815 892-19 |
|  | Brushed Durabrand (23kt Gold) | 20 815 892-28 |
|  | Matte Black | 20 815 892-33 |
|  | Brushed Champagne (22kt Gold) | 20 815 892-46 |
|  | Champagne (22kt Gold) | 20 815 892-47 |
|  | Brushed Chrome | 20 815 892-93 |

Recommended miscellaneous

Strainer waste with control handle - Brushed Dark Platinum 10 710 970-99



Recommended miscellaneous

Dispenser with rosette - Brushed Dark Platinum 82 444 970-99





TARA Three-hole mixer - Brushed Dark Platinum

TARA

20 815 892

Certificates

WRAS_2107

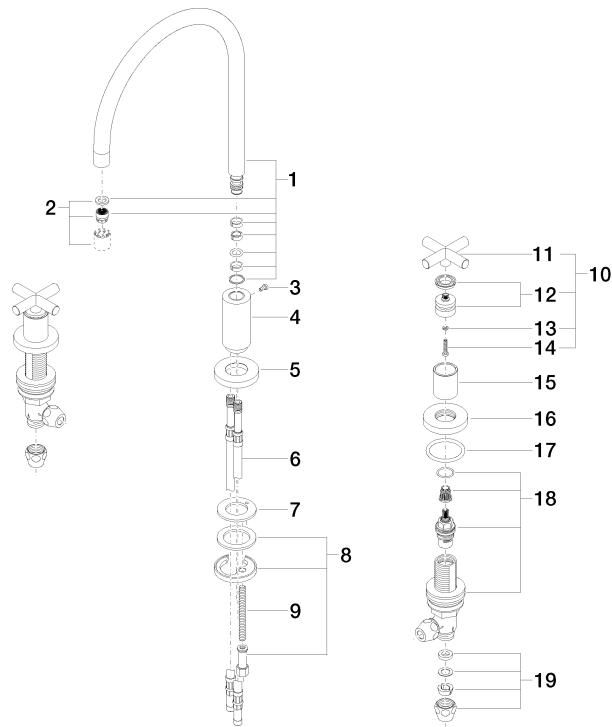
LGA_19

ETA_18

GDV_0400

Product version from 6/30/2009

Parts for other
finishes can be found
here: [Chrome](#)





TARA Three-hole mixer - Brushed Dark Platinum

TARA

20 815 892

Spare parts list

Product version from 6/30/2009