

**TARA Single-hole basin mixer with stand pipe without pop-up waste - Brushed Bronze**

22 585 892 Product version from 4/1/2024

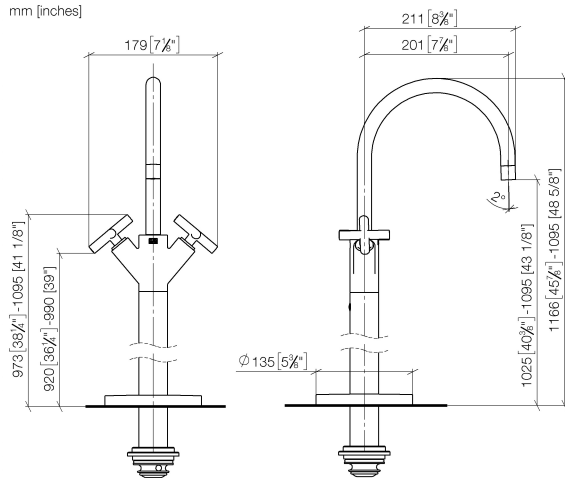


- 201mm projection
- pivotable spout 360°
- circular, air-enriched flow
- total height 1095 - 1166 mm
- height up to aerator 1025 – 1095 mm
- rosette Ø 135 mm
- max. flow 5.7 l/min
- lead-free
- This product can help a building meet the requirements of Green Building Rating Systems, e.g. LEED®, BREEAM®, DGNB
- WRAS

|   |                               |               |
|---|-------------------------------|---------------|
|    | Brushed Bronze                | 22 585 892-42 |
|    | Chrome                        | 22 585 892-00 |
|    | Brushed Platinum              | 22 585 892-06 |
|    | Platinum                      | 22 585 892-08 |
|    | Dark Chrome                   | 22 585 892-19 |
|    | Brushed Durabrass (23kt Gold) | 22 585 892-28 |
|    | Matte Black                   | 22 585 892-33 |
|    | Brushed Champagne (22kt Gold) | 22 585 892-46 |
|    | Champagne (22kt Gold)         | 22 585 892-47 |
|   | Brushed Chrome                | 22 585 892-93 |
|  | Brushed Dark Platinum         | 22 585 892-99 |

## TARA Single-hole basin mixer with stand pipe without pop-up waste - Brushed Bronze

22 585 892 Product version from 4/1/2024  
mm [inches]



### Flow rate chart



### Codes & Standards

DIN 4109

ISO 3822

Scottish Water  
Byelaws

UK Water Supply  
Regulations

### Ü-Zeichen



## TARA Single-hole basin mixer with stand pipe without pop-up waste - Brushed Bronze

---

22 585 892 Product version from 4/1/2024

### Certificates

---

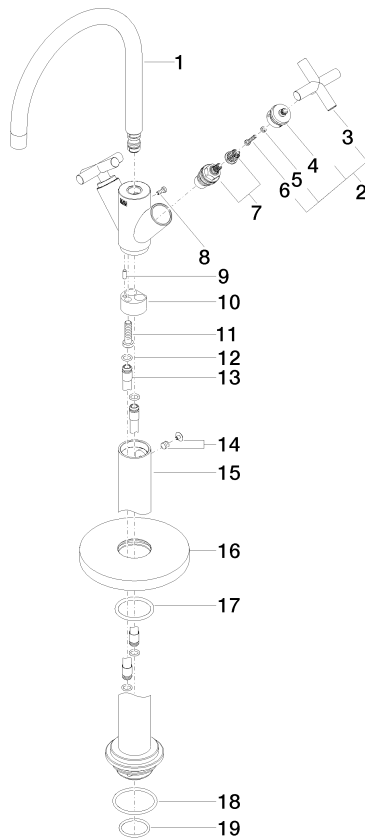
LGA\_38

WRAS\_2304

## TARA Single-hole basin mixer with stand pipe without pop-up waste - Brushed Bronze

22 585 892 Product version from 4/1/2024

Parts for other  
finishes can be found  
here: [Chrome](#)



### Spare parts list

| No. | Item Number        | Name       | Quantity used | Delivery time |
|-----|--------------------|------------|---------------|---------------|
| 1   | 90 28 22 214 02-42 | spout      | 1             | 30            |
| 2   | 90 20 89 010 10-42 | handle     | 2             | 30            |
| 3   | 09 20 89 010-42    | handle     | 2             | 60            |
| 4   | 90 12 12 219 00-42 | base       | 2             | 30            |
| 5   | 90 30 11 029 00 90 | disc       | 2             | 2             |
| 6   | 90 30 30 075 00 90 | screw      | 2             | 2             |
| 7   | 90 90 03 151 00 90 | top        | 2             | 2             |
| 8   | 09 30 30 054 90    | screw      | 1             | 2             |
| 9   | 09 31 11 040 90    | pin        | 1             | 2             |
| 10  | 09 24 03 193 90    | adaptor    | 1             | 2             |
| 11  | 09 30 30 047 90    | screw      | 1             | 2             |
| 12  | 09 14 10 139 90    | seal       | 4             | 2             |
| 13  | 04 28 22 022 10 90 | connection | 2             | 2             |
| 14  | 04 31 11 002 00 90 | pin        | 1             | 2             |
| 15  | 04 28 22 028 00-42 | pipe       | 1             | 60            |
| 16  | 09 27 88 011-42    | rosette    | 1             | 60            |
| 17  | 90 14 10 043 00 90 | seal       | 1             | 2             |
| 18  | 09 14 10 084 90    | seal       | 1             | 2             |
| 19  | 09 14 10 018 90    | seal       | 1             | 2             |