

TARA Angle valve - Chrome

TARA

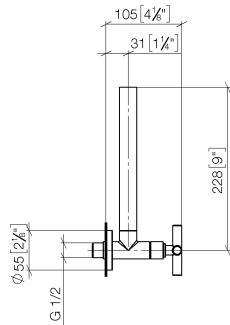
22 900 892 Product version up to 5/27/2021



- rosette Ø 55 mm
- hose covering 200mm, for shortening

	Chrome	22 900 892-00
	Brushed Platinum	22 900 892-06
	Platinum	22 900 892-08
	Dark Chrome	22 900 892-19
	Brushed Durabrass (23kt Gold)	22 900 892-28
	Matte Black	22 900 892-33
	Brushed Dark Brass	22 900 892-39
	Brushed Bronze	22 900 892-42
	Brushed Champagne (22kt Gold)	22 900 892-46
	Champagne (22kt Gold)	22 900 892-47
	Brushed Dark Platinum	22 900 892-99

mm [inches]



Flow rate chart

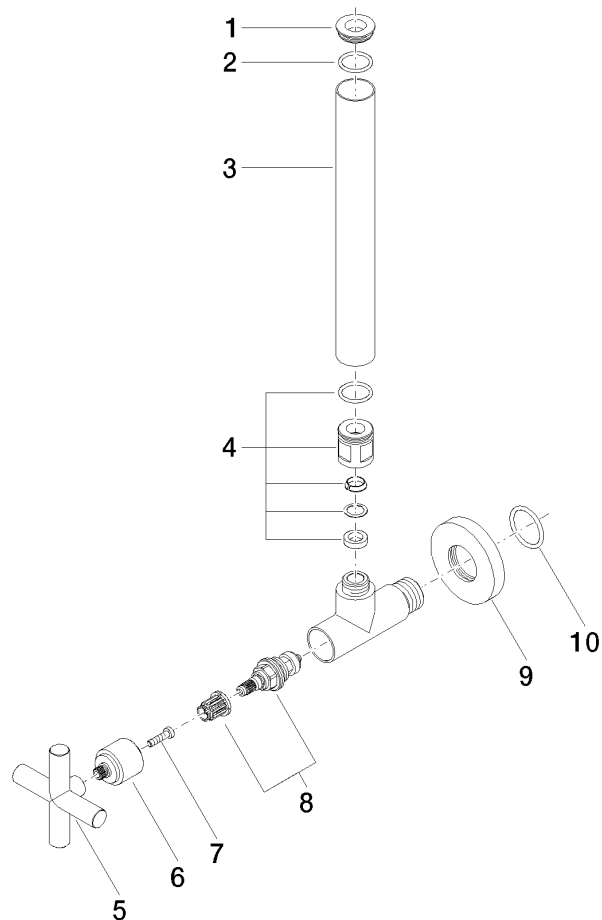


TARA Angle valve - Chrome

TARA

22 900 892 Product version up to 5/27/2021

Parts for other
finishes can be found
here: Brushed
Platinum



Spare parts list

No.	Item Number	Name	Quantity used	Delivery time
	3 09 28 22 020-00	pipe	1.00	10
	9 09 27 22 015-00	rosette	1.00	10
	4 04 24 04 220 01-00	threaded connector	1.00	10
	8 90 90 03 006 00 90	top	1.00	2
	7 09 30 30 069 90	screw	1.00	2
	10 09 14 10 093 90	seal	1.00	2
	1 09 21 22 000-00	nipple	1.00	10
	6 09 12 12 041-00	base	1.00	10
	5 09 20 89 010-00	handle	1.00	60
	2 90 14 10 010 00 90	seal	1.00	2