

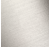


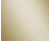

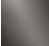
## CL.1 Single-lever bath mixer with stand pipe for free-standing assembly with hand shower set - Brushed Platinum

CL.1

25 863 705



- 238mm projection
- rectangular spray pattern with 55 individual jets
- max. spout flow rate 24.6 l/min
- Hand shower: COMPACT RAIN, max. flow rate 6.8 l/min (at 3 bar)
- bar-type hand shower with anti-scale system
- wall bracket
- automatic bath/shower diverter
- total height 935 - 1005 mm
- stand pipe height 598 - 668 mm
- height up to aerator 852 – 922 mm
- push-on rosette 131 x 131 mm
- metal shower hose 1250mm with integrated anti-twist protection

|  |                               |               |
|--|-------------------------------|---------------|
|  | Brushed Platinum              | 25 863 705-06 |
|  | Chrome                        | 25 863 705-00 |
|  | Dark Chrome                   | 25 863 705-19 |
|  | Brushed Champagne (22kt Gold) | 25 863 705-46 |
|  | Champagne (22kt Gold)         | 25 863 705-47 |
|  | Brushed Dark Platinum         | 25 863 705-99 |

### Required miscellaneous



- Concealed floor mounting -**
- max. recess depth 150 mm
  - min. recess depth 80 mm

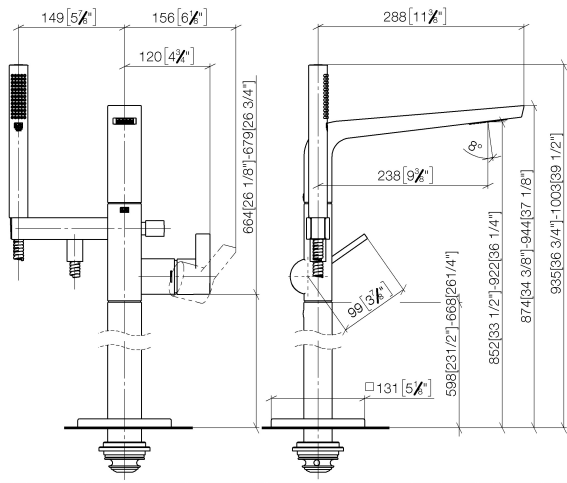
35 945 970 90

## CL.1 Single-lever bath mixer with stand pipe for free-standing assembly with hand shower set - Brushed Platinum

CL.1

25 863 705

mm [inches]



Flow rate chart



### Codes & Standards

ASME A112.18.1

cUPC

DIN 4109

EN 1717

ISO 3822

Ü-Zeichen



## CL.1 Single-lever bath mixer with stand pipe for free-standing assembly with hand shower set - Brushed Platinum

CL.1

---

25 863 705

Certificates

---

IAPMO\_4976

Belgaqua\_19\_77

LGA\_29

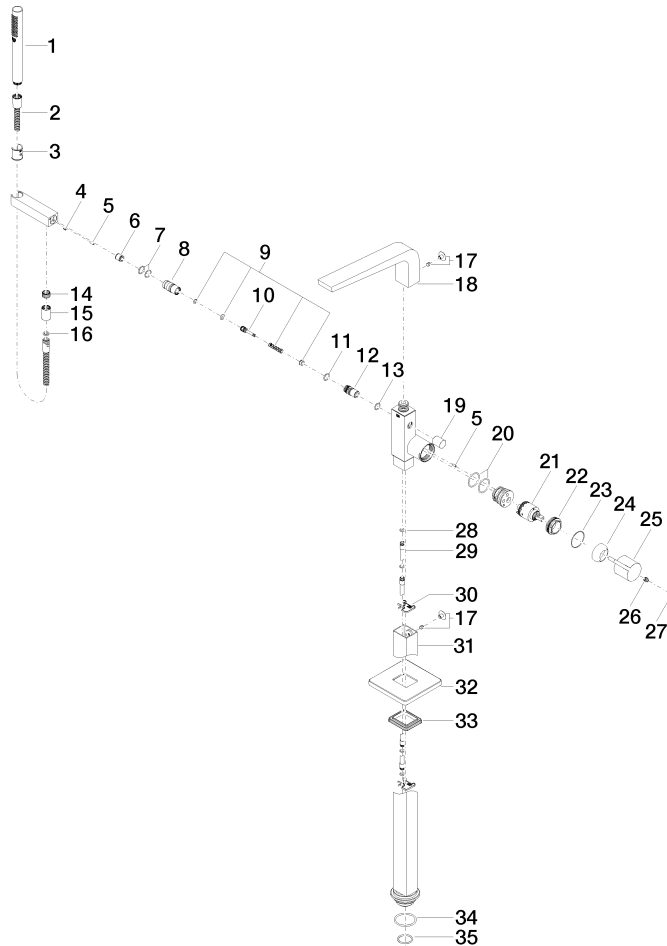
Belgaqua\_24-003-2

**CL.1 Single-lever bath mixer with stand pipe for free-standing assembly with hand shower set - Brushed Platinum**

CL.1

25 863 705

**Product version from 7/1/2023**





CL.1 Single-lever bath mixer with stand pipe for free-standing assembly with  
hand shower set - Brushed Platinum

CL.1

25 863 705

**Spare parts list**

**Product version from 7/1/2023**

| No. | Item Number        | Name   | Quantity used | Delivery time |
|-----|--------------------|--------|---------------|---------------|
|     | 90 12 11 140 30-06 | shower | 43            | 10            |