



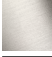

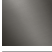
CYO Single-lever bath mixer with stand pipe for free-standing assembly with hand shower set - Brushed Durabrass (23kt Gold)

CYO

25 863 811



- 247mm projection
- rectangular, air-enriched flow
- max. spout flow rate 26.5 l/min
- Hand shower: COMPACT RAIN, max. flow rate 6.8 l/min (at 3 bar)
- bar-type hand shower with anti-scale system
- wall bracket
- automatic bath/shower diverter
- total height 980 - 1050 mm
- stand pipe height 598 - 668 mm
- height up to aerator 903 – 973 mm
- push-on rosette 131 x 131 mm
- metal shower hose 1250mm with integrated anti-twist protection
- WRAS

|   |                               |               |
|---|-------------------------------|---------------|
|  | Brushed Durabrass (23kt Gold) | 25 863 811-28 |
|  | Chrome                        | 25 863 811-00 |
|  | Brushed Platinum              | 25 863 811-06 |
|  | Dark Chrome                   | 25 863 811-19 |
|  | Brushed Dark Platinum         | 25 863 811-99 |

**CYO Single-lever bath mixer with stand pipe for free-standing assembly with hand shower set - Brushed Durabron (23kt Gold)**

CYO

25 863 811

mm [inches]



Flow rate chart



**Codes & Standards**

DIN 4109

EN 1717

ISO 3822

Scottish Water  
Byelaws

UK Water Supply  
Regulations

Ü-Zeichen



CYO Single-lever bath mixer with stand pipe for free-standing assembly with  
hand shower set - Brushed Durabrass (23kt Gold)

CYO

25 863 811

Certificates and sustainability

LGA\_38

WRAS\_2201

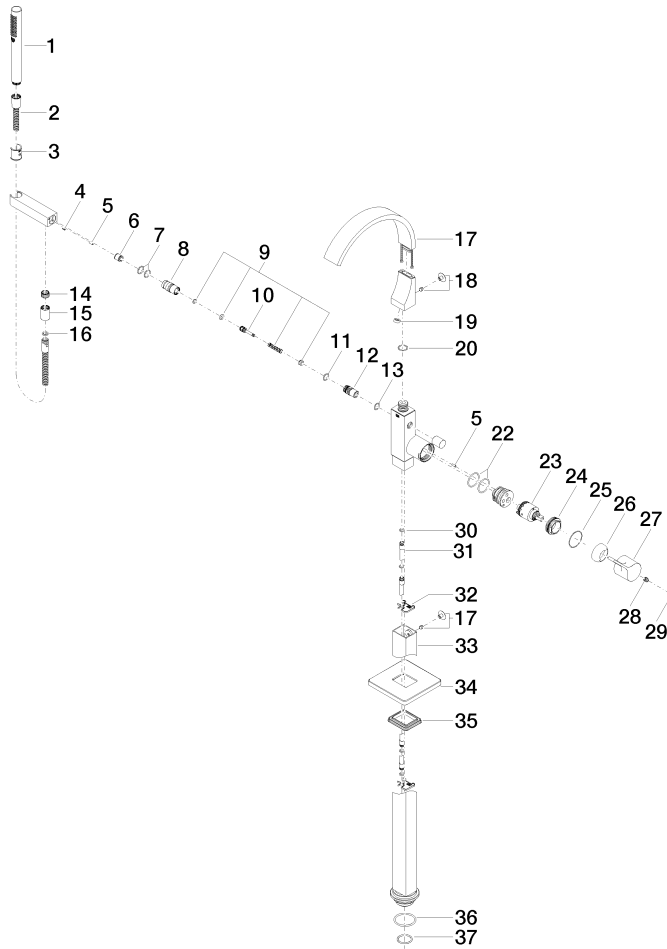
Belgaqua\_21-376-2

# CYO Single-lever bath mixer with stand pipe for free-standing assembly with hand shower set - Brushed Durabronz (23kt Gold)

CYO

25 863 811

Parts for other  
finishes can be found  
here: [Chrome](#)







## CYO Single-lever bath mixer with stand pipe for free-standing assembly with hand shower set - Brushed Durabron (23kt Gold)

CYO

25 863 811

### Spare parts list

| No.  | Item Number        | Name   | Quantity used | Delivery time |
|--|--------------------|--|---------------|---------------|
| 20   | 09 14 10 031 90    | seal   | 2.00          | 2             |
| 2  | 90 30 02 072 00-28 | Metal shower hose 1/2" x 3/8" x 1250 mm - Brushed Durabron (23kt Gold) | 1.00          | 20            |
| 18   | 04 31 20 034 00 90 | plug   | 2.00          | 2             |
| 4  | 09 31 11 058 90    | pin  | 1.00          | 2             |
| 19   | 09 23 01 057 90    | flow reducer   | 1.00          | 2             |
| 3  | 09 18 40 118 90    | sleeve   | 1.00          | 2             |
| 17   | 90 11 70 011 00-28 | spout  | 1.00          | 20            |
| 14   | 09 24 03 069 90    | nipple   | 1.00          | 2             |
| 9  | 90 16 02 023 00 90 | spring   | 1.00          | 2             |
| 10   | 09 31 09 094 20-28 | pull-rod   | 1.00          | 60            |
| 12   | 09 21 34 080-28    | nipple   | 1.00          | 60            |
| 5  | 09 31 11 040 90    | pin  | 3.00          | 2             |
| 15   | 90 21 02 069 00-28 | cover  | 1.00          | 20            |
| 11   | 90 14 10 055 00 90 | seal   | 1.00          | 2             |
| 6  | 90 23 01 141 00 90 | back-flow preventer  | 1.00          | 2             |
| 7  | 90 14 10 010 00 90 | seal   | 2.00          | 2             |
| 13   | 90 14 10 033 00 90 | seal   | 1.00          | 2             |
| 16   | 90 14 20 026 00 90 | seal   | 1.00          | 2             |
| 1  | 90 12 11 140 41-28 | shower   | 1.00          | 20            |
| 25   | 09 14 10 037 90    | seal   | 1.00          | 2             |
| 24   | 09 24 04 298 90    | nut  | 1.00          | 2             |
| 37   | 09 14 10 018 90    | seal   | 1.00          | 2             |
| 23   | 90 15 05 039 00 90 | cartridge  | 1.00          | 2             |
| 8  | 09 24 03 130-28    | nipple   | 1.00          | -             |
| Spare part can no longer be ordered, please order the replacement item |                    |  |               |               |
| 32   | 09 20 93 051 90    | holder   | 2.00          | 2             |
| 36   | 09 14 10 084 90    | seal   | 1.00          | 2             |
| 34   | 09 27 71 011-28    | rosette  | 1.00          | 60            |
| 27   | 09 20 80 022-28    | handle   | 1.00          | 20            |
| 35   | 09 14 03 107 90    | seal   | 1.00          | 2             |
| 31   | 04 28 22 025 00 90 | connection   | 2.00          | 2             |
| 28   | 90 31 11 030 00 90 | pin  | 1.00          | 2             |
| 22   | 09 14 10 148 90    | seal   | 1.00          | 2             |
| 33   | 04 28 22 024 00-28 | pipe   | 1.00          | 60            |
| 29   | 90 31 20 087 00-28 | plug   | 1.00          | 20            |
| 30   | 09 14 10 139 90    | seal   | 4.00          | 2             |
| 26   | 09 28 30 036-28    | cover  | 1.00          | 20            |