

TARA Shower set without hand shower - Platinum

TARA

26 413 892



- slide bar
- Pipe diameter 18 mm
- rosettes Ø 55 mm
- gauge 800 mm
- metal shower hose 1750mm with integrated anti-twist protection
- shower hose connector 3/8"
- WRAS 2009048

This article does not include a hand shower!

| | | |
|--|--------------------------------|---------------|
|  | Platinum | 26 413 892-08 |
|  | Chrome | 26 413 892-00 |
|  | Brushed Platinum | 26 413 892-06 |
|  | Dark Chrome | 26 413 892-19 |
|  | Brushed Durabronze (23kt Gold) | 26 413 892-28 |
|  | Matte Black | 26 413 892-33 |
|  | Brushed Bronze | 26 413 892-42 |
|  | Brushed Champagne (22kt Gold) | 26 413 892-46 |
|  | Champagne (22kt Gold) | 26 413 892-47 |
|  | Brushed Chrome | 26 413 892-93 |
|  | Brushed Dark Platinum | 26 413 892-99 |

TARA Shower set without hand shower - Platinum

TARA

26 413 892

Recommended miscellaneous



Concealed wall elbow -
 • max. recess depth 163 mm
 • min. recess depth 90 mm

35 085 970 90

Recommended miscellaneous



Wall elbow - Platinum

28 450 625-08

Required miscellaneous



**Hand shower FlowReduce -
Platinum**

28 012 979-08
0010

Required miscellaneous



Hand shower - Platinum

28 017 979-08

Required miscellaneous



Hand shower - Platinum

28 016 979-08

Required miscellaneous



Hand shower - Platinum

28 012 979-08

Required miscellaneous



**Hand shower FlowReduce -
Platinum**

28 016 979-08
0010

Required miscellaneous



Hand shower - Platinum

28 018 979-08

Required miscellaneous



**Hand shower FlowReduce -
Platinum**

28 018 979-08
0010

Required miscellaneous



**SERIES-VARIOUS Hand shower -
Platinum**

28 029 979-08
0010

Required miscellaneous



**SERIES-VARIOUS Hand shower -
Platinum**

28 029 979-08

Required miscellaneous



**SERIES-VARIOUS Hand shower -
Platinum**

28 027 979-08
0010

Required miscellaneous



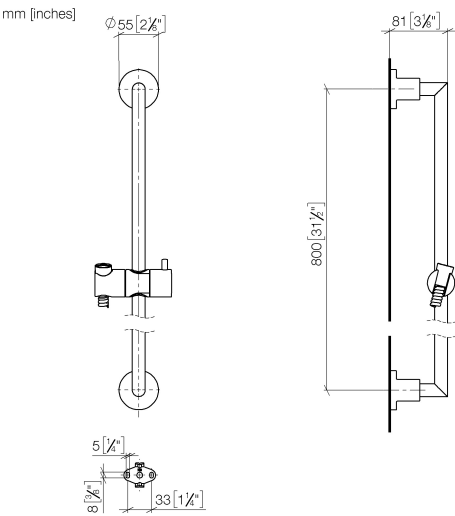
**SERIES-VARIOUS Hand shower -
Platinum**

28 025 979-08
0010

TARA Shower set without hand shower - Platinum

TARA

26 413 892



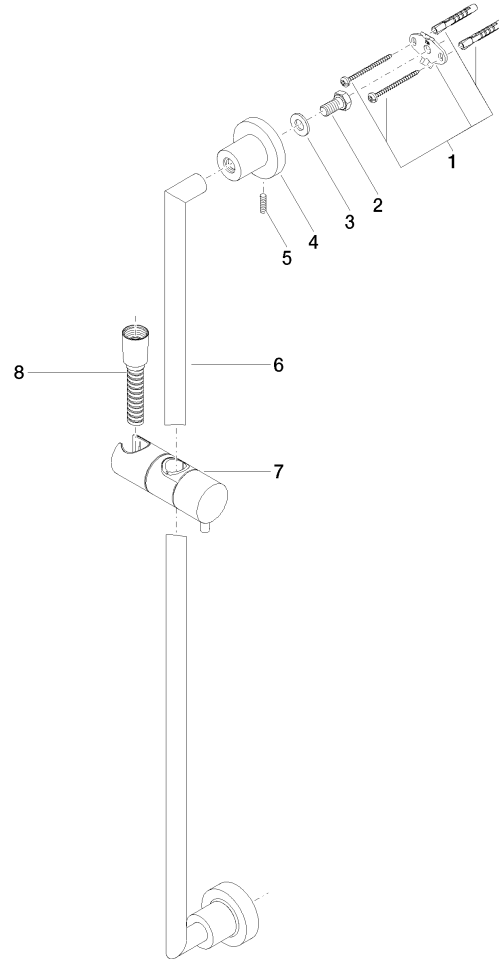
Codes & Standards

| | | | |
|----------------|------|---------------------------|--------------------------------|
| ASME A112.18.1 | cUPC | Scottish Water Byelaws | UK Water Supply Regulations |
| XP P 41-280 | | | |

Certificates

| | | |
|------------|-----------|---------------|
| IAPMO_4976 | WRAS_2009 | ACS_20 ACC LY |
|------------|-----------|---------------|

Product version from 4/1/2024





TARA Shower set without hand shower - Platinum

TARA

26 413 892

Spare parts list

Product version from 4/1/2024

| No. | Item Number | Name | Quantity used | Delivery time |
|-----|--------------------|------------|---------------|---------------|
| | 05 17 20 739 00 90 | fixing set | 13 | 2 |