

MADISON Bath shower set for bath rim or tile edge installation - Chrome







MADISON

27 502 360



- spout: circular, air-enriched flow
- max. spout flow rate 23 l/min
- Hand shower: COMPACT RAIN, max. flow rate 6.8 l/min (at 3 bar)
- complete hand shower set with anti-scale system
- 225mm projection
- automatic bath/shower diverter
- height of mixer 185 mm
- height up to aerator 140 mm
- hole diameter valve 32 mm
- hole diameter spout 32 mm
- hole diameter for complete hand shower set 32 mm
- rosette for complete hand shower set Ø 55mm
- rosette for deck valve Ø 55mm
- metal shower hose 1750mm with integrated anti-twist protection

Intrinsic protection against back flow.

	Chrome	27 502 360-00
	Brushed Platinum	27 502 360-06
	Platinum	27 502 360-08
	Durabrand (23kt Gold)	27 502 360-09
	Brushed Durabrand (23kt Gold)	27 502 360-28
	Brushed Dark Platinum	27 502 360-99

Recommended miscellaneous



Perfecto installation kit - 12 614 970 90

Recommended miscellaneous



Decorative caps for Perfecto - Chrome 12 801 970-00
• 1 pair



MADISON Bath shower set for bath rim or tile edge installation - Chrome

MADISON

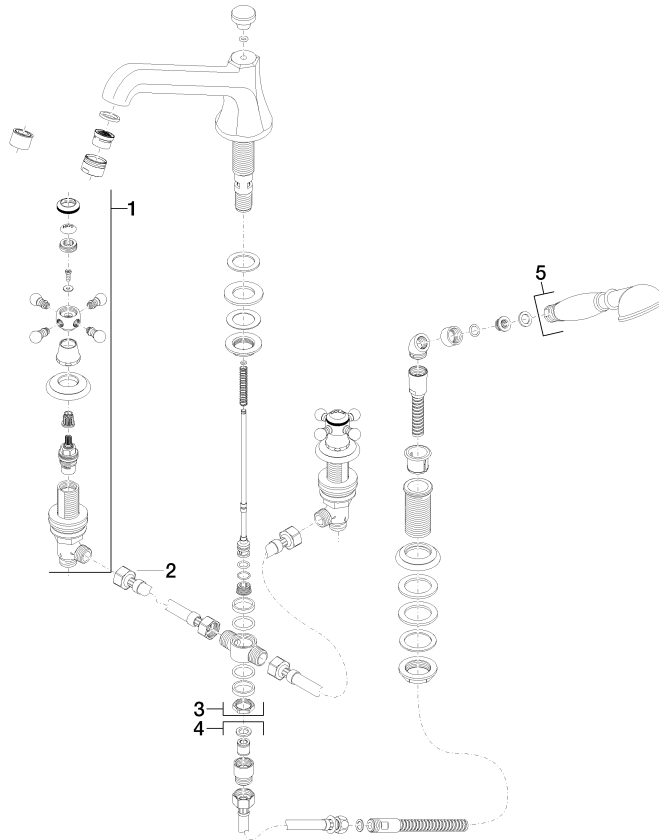
27 502 360

Certificates

LGA_8

Belgaqua_21-380-2

Product version from 7/31/2009





MADISON Bath shower set for bath rim or tile edge installation - Chrome

MADISON

27 502 360

Spare parts list

Product version from 7/31/2009