

## MADISON Bath shower set for bath rim or tile edge installation - Chrome

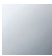

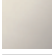



MADISON

27 502 370



- 225mm projection
- complete hand shower set: normal flow
- spout: circular, air-enriched flow
- complete hand shower set with anti-scale system
- automatic bath/shower diverter
- height of mixer 185 mm
- height up to aerator 140 mm
- hole diameter valve 32 mm
- hole diameter spout 32 mm
- hole diameter for complete hand shower set 32 mm
- rosette for spout Ø 70mm
- rosette for complete hand shower set Ø 60mm
- rosette for deck valve Ø 60mm
- metal shower hose 1750mm with integrated anti-twist protection
- max. spout flow rate 23 l/min
- max. flow for complete hand shower set 6.8 l/min

Intrinsic protection against back flow.

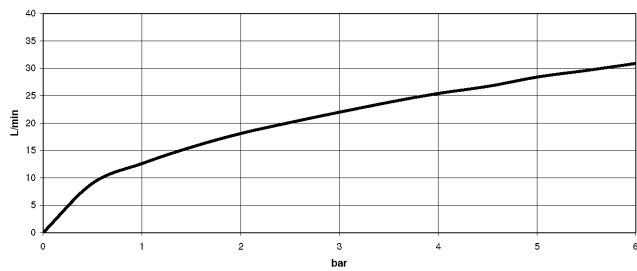
	Chrome	27 502 370-00
	Brushed Platinum	27 502 370-06
	Platinum	27 502 370-08
	Durabrand (23kt Gold)	27 502 370-09
	Brushed Durabrand (23kt Gold)	27 502 370-28
	Brushed Dark Platinum	27 502 370-99

### Recommended miscellaneous

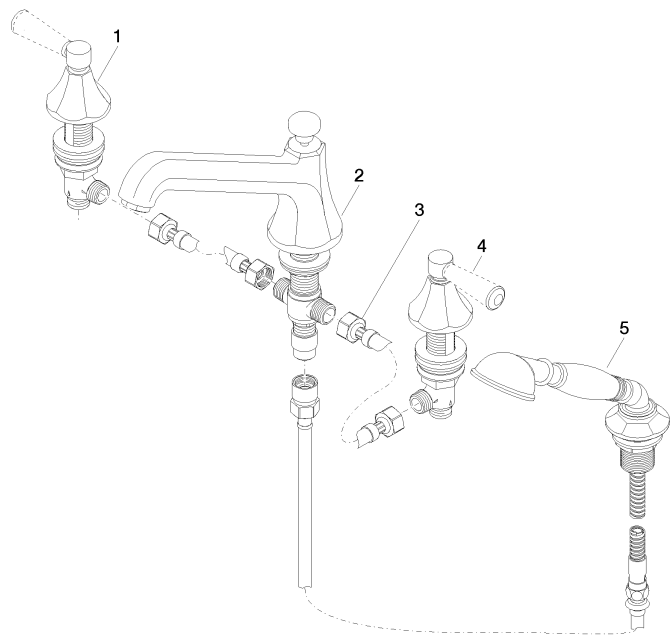


**Perfecto installation kit -**

12 614 970 90



27 502 370



**Spare parts list**

No.	Item Number	Name	Quantity used	Delivery time
1	20 000 370-00	side panel	1	60
2	13 502 380-00	spout	1	60
3	12 502 970 90	High pressure hose 1/2" x 1/2" x 400 mm -	2	2
4	20 000 371-00	side panel	1	60
5	27 703 370-00	shower set	1	60