

## MADISON Bath shower set for bath rim or tile edge installation - Brushed Durabrand (23kt Gold)

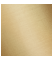

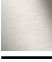


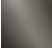
MADISON

27 502 370



- 225mm projection
- complete hand shower set: normal flow
- spout: circular, air-enriched flow
- complete hand shower set with anti-scale system
- automatic bath/shower diverter
- height of mixer 185 mm
- height up to aerator 140 mm
- hole diameter valve 32 mm
- hole diameter spout 32 mm
- hole diameter for complete hand shower set 32 mm
- rosette for spout Ø 70mm
- rosette for complete hand shower set Ø 60mm
- rosette for deck valve Ø 60mm
- metal shower hose 1750mm with integrated anti-twist protection
- max. spout flow rate 23 l/min
- max. flow for complete hand shower set 6.8 l/min

Intrinsic protection against back flow.

	Brushed Durabrand (23kt Gold)	27 502 370-28
	Chrome	27 502 370-00
	Brushed Platinum	27 502 370-06
	Platinum	27 502 370-08
	Durabrand (23kt Gold)	27 502 370-09
	Brushed Dark Platinum	27 502 370-99

### Recommended miscellaneous



**Perfecto installation kit -**

12 614 970 90





MADISON Bath shower set for bath rim or tile edge installation - Brushed  
Durabrass (23kt Gold)

---

MADISON

27 502 370

Certificates

---

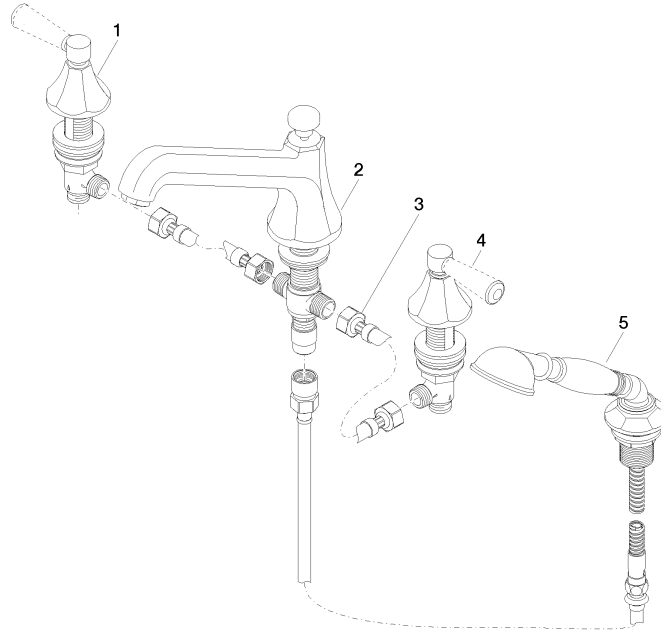
LGA\_8

Belgaqua\_21-380-2

**MADISON Bath shower set for bath rim or tile edge installation - Brushed  
Durabronz (23kt Gold)**

MADISON

27 502 370





MADISON Bath shower set for bath rim or tile edge installation - Brushed Durabrass (23kt Gold)

MADISON

27 502 370

Spare parts list

No.	Item Number	Name	Quantity used	Delivery time
	20 000 370-28	side panel	6	60