

LULU Bath shower set for bath rim or tile edge installation - Chrome



LULU

27 512 710    Product version from 8/31/2015 to 5/15/2020



- spout: circular, air-enriched flow
- max. flow 23.5 l/min at 3 bar flow pressure
- Hand shower: COMPACT RAIN, max. flow rate 6.8 l/min (at 3 bar)
- complete hand shower set with anti-scale system
- 215mm projection
- automatic bath/shower diverter
- height of mixer 110 mm
- height up to aerator 84 mm
- hole diameter valve 32 mm
- hole diameter spout 32 mm
- hole diameter for complete hand shower set 32 mm
- rosette for spout 63 x 63mm
- rosette for complete hand shower set 63 x 63mm
- rosette for deck valve 63 x 63mm
- metal shower hose 1750mm with integrated anti-twist protection

Intrinsic protection against back flow.

	Chrome	27 512 710-00
	Brushed Platinum	27 512 710-06

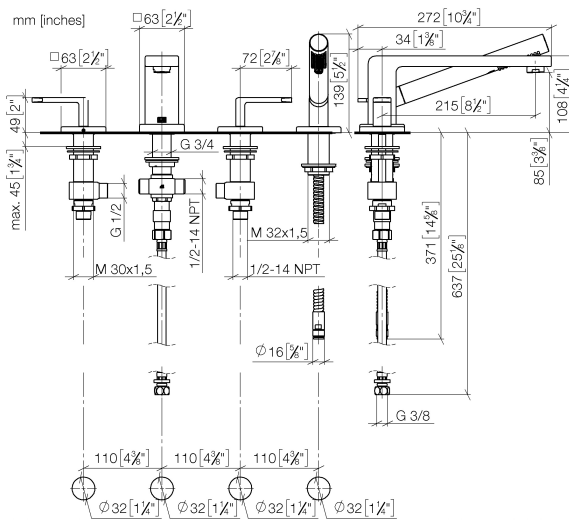
Recommended miscellaneous

	<b>Perfecto installation kit -</b>	12 614 970 90
--	------------------------------------	---------------

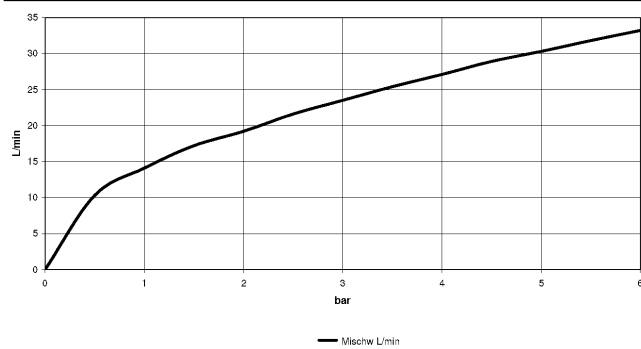
Recommended miscellaneous

	<b>Decorative caps for Perfecto - Chrome</b>	12 801 970-00
	• 1 pair	

27 512 710 Product version from 8/31/2015 to 5/15/2020



**Flow rate chart**



**Codes & Standards**

ASME A112.18.1      cUPC      DIN 4109      ISO 3822

**Ü-Zeichen**



## LULU Bath shower set for bath rim or tile edge installation - Chrome

---

LULU

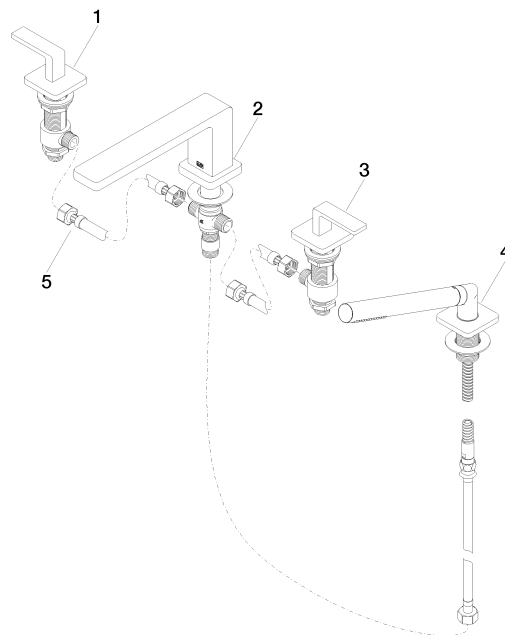
27 512 710 Product version from 8/31/2015 to 5/15/2020

### Certificates and sustainability

---

LGA\_19

IAPMO\_4976



## Spare parts list

No.	Item Number	Name	Quantity used	Delivery time
4	27 702 710-00	LULU Hand shower set for bath rim or tile edge installation - Chrome	1.00	-
Spare part can no longer be ordered, please order the replacement item				
5	12 502 970 90	High pressure hose 1/2" x 1/2" x 400 mm -	1.00	2
3	20 000 711-00	side panel	1.00	60
2	13 512 710-00	spout	1.00	60
1	20 000 710-00	side panel	1.00	60