

VAIA Rinsing spray set - Brushed Platinum

VAIA

27 718 809 Product version from 7/1/2023



- with round rosette
- spray flow
- automatic spout/shower diverter
- height of mixer 171 mm
- hole diameter rinsing spray 32mm
- fabric braided hose 1500 mm
- sprayface with anti-scaling system
- lead-free
- This product can help a building meet the requirements of Green Building Rating Systems, e.g. LEED®, BREEAM®, DGNB

Can only be combined with 33810809, 33826809, 19815809, 19825809.

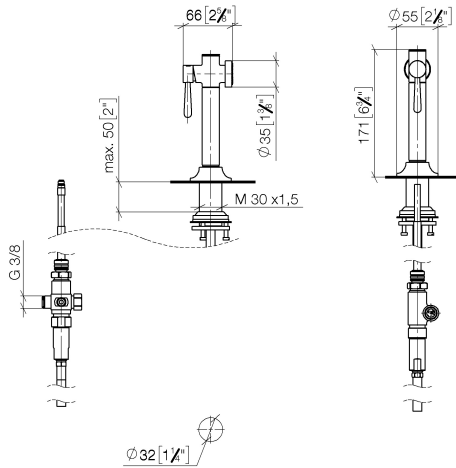
Intrinsic protection against back flow.

Residual water may emerge from the spray after closing.

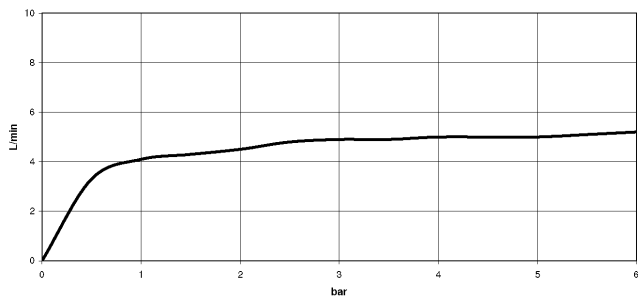
Operating unit can be positioned freely.

	Brushed Platinum	27 718 809-06
	Chrome	27 718 809-00
	Platinum	27 718 809-08
	Durabrand (23kt Gold)	27 718 809-09
	Dark Chrome	27 718 809-19
	Brushed Durabrand (23kt Gold)	27 718 809-28
	Matte Black	27 718 809-33
	Brushed Bronze	27 718 809-42
	Brushed Champagne (22kt Gold)	27 718 809-46
	Champagne (22kt Gold)	27 718 809-47
	Brushed Chrome	27 718 809-93
	Brushed Dark Platinum	27 718 809-99

mm [inches]



Flow rate chart



Codes & Standards

DIN 4109

ISO 3822

NSF372

NSF61

Ü-Zeichen



VAIA Rinsing spray set - Brushed Platinum

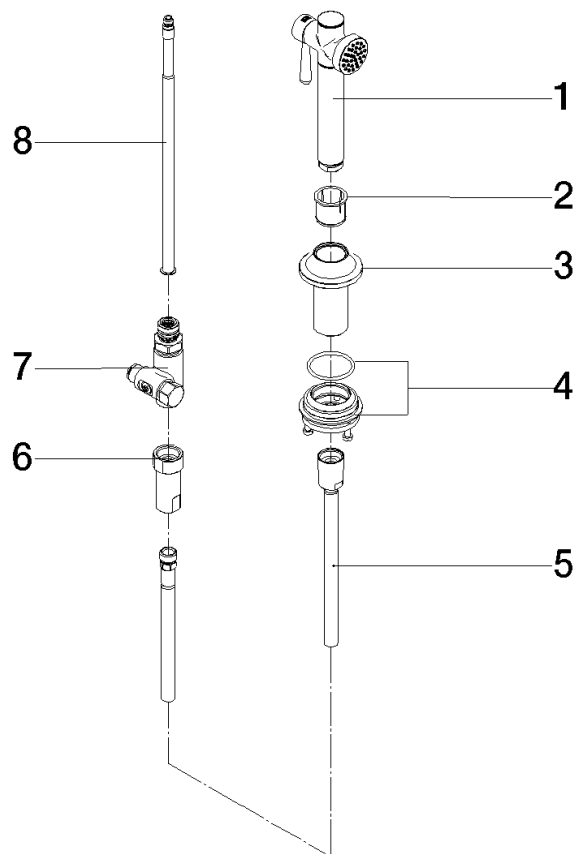
VAIA

27 718 809 Product version from 7/1/2023

Certificates and sustainability

LGA_38 IAPMO_N-4976 IAPMO_6397

Parts for other
finishes can be found
here: [Chrome](#)



Spare parts list

No.	Item Number	Name	Quantity used	Delivery time
2	90 18 40 085 00 90	sleeve	1.00	2
7	90 17 09 046 12 90	diverter	1.00	2
4	04 23 10 047 00 92	fixing set	1.00	2
8	90 28 20 068 00 90	connection	1.00	2
1	90 12 11 096 12-06	shower	1.00	10
5	90 30 02 062 00-06	hose	1.00	10
3	90 30 01 142 00-06	shaft	1.00	10
6	90 24 03 241 00 90	nipple	1.00	2