

Rinsing spray set - Brushed Platinum

SERIES-VARIOUS

27 723 970 Product version from 2/1/2023



- with angular rosette
- spray flow
- automatic spout/shower diverter
- height of mixer 190 mm
- hole diameter rinsing spray 32mm
- fabric braided hose 1500 mm
- sprayface with anti-scaling system
- lead-free

Can only be combined with 33826680, 32815680.

Intrinsic protection against back flow.

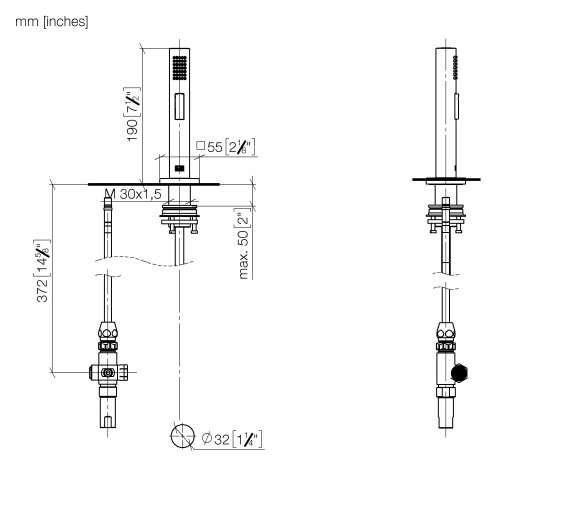
Residual water may emerge from the spray after closing.

Operating unit can be positioned freely.

| | | |
|---|--------------------------------|---------------|
|  | Brushed Platinum | 27 723 970-06 |
|  | Chrome | 27 723 970-00 |
|  | Platinum | 27 723 970-08 |
|  | Dark Chrome | 27 723 970-19 |
|  | Brushed Durabronze (23kt Gold) | 27 723 970-28 |
|  | Brushed Bronze | 27 723 970-42 |
|  | Brushed Champagne (22kt Gold) | 27 723 970-46 |
|  | Champagne (22kt Gold) | 27 723 970-47 |
|  | Brushed Dark Platinum | 27 723 970-99 |

27 723 970

Product version from 2/1/2023

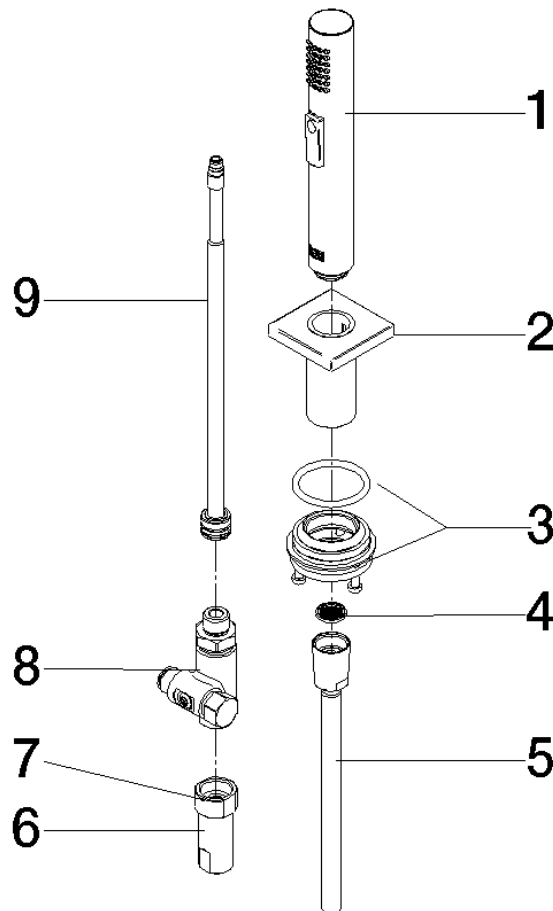


| Codes & Standards | | | |
|-------------------|----------|--------|-------|
| DIN 4109 | ISO 3822 | NSF372 | NSF61 |

Ü-Zeichen

| Certificates and sustainability | | |
|---------------------------------|--------------|------------|
| LGA_29 | IAPMO_N-4976 | IAPMO_6397 |

Parts for other
finishes can be found
here: [Chrome](#)



Spare parts list

| No. | Item Number | Name | Quantity used | Delivery time |
|-----|--------------------|------------|---------------|---------------|
| 1 | 04 12 11 158 00-06 | shower | 1.00 | 10 |
| 4 | 09 23 01 039 90 | sieve | 1.00 | 2 |
| 2 | 90 27 78 011 00-06 | shaft | 1.00 | 10 |
| 9 | 90 28 20 068 00 90 | connection | 1.00 | 2 |
| 8 | 90 17 09 046 12 90 | diverter | 1.00 | 2 |
| 3 | 90 30 10 058 00 90 | fixing set | 1.00 | 2 |
| 6 | 90 24 03 241 00 90 | nipple | 1.00 | 2 |
| 5 | 90 30 02 062 00-06 | hose | 1.00 | 10 |
| 7 | 90 14 20 026 00 90 | seal | 1.00 | 2 |