

## Affusion pipe with cover plate FlowReduce - Platinum

SERIES SPECIFIC

27 858 979 Product version from 4/1/2024

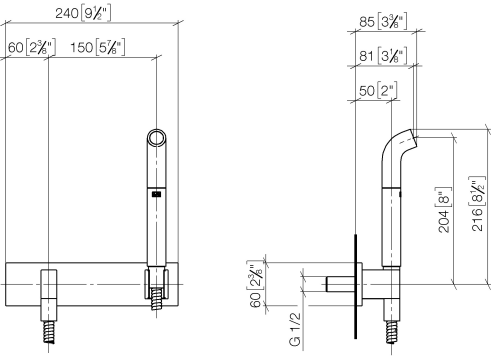


- laminar flow
- 3/8" shower outlet
- cover plate 240 x 60 mm
- metal shower hose 1250mm with integrated anti-twist protection
- 1/2" connection
- plug-link mounting
- max. flow 7 l/min
- This product can help a building meet the requirements of Green Building Rating Systems, e.g. LEED®, BREEAM®, DGNB

Intrinsic protection against back flow.

	Platinum	27 858 979-08
	Chrome	27 858 979-00
	Brushed Platinum	27 858 979-06
	Dark Chrome	27 858 979-19
	Brushed Light Gold	27 858 979-27
	Brushed Durabrass (23kt Gold)	27 858 979-28
	Matte Black	27 858 979-33
	Brushed Champagne (22kt Gold)	27 858 979-46
	Champagne (22kt Gold)	27 858 979-47
	Brushed Chrome	27 858 979-93
	Brushed Dark Platinum	27 858 979-99

mm [inches]



Codes & Standards

DIN 4109

EN 1717

ISO 3822

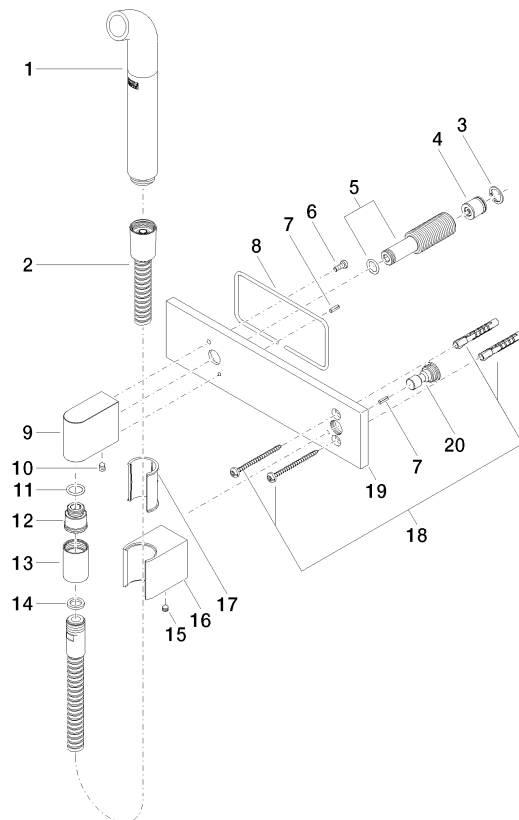
Ü-Zeichen

Certificates and sustainability

Belgaqua\_24-007-2    LGA\_38

27 858 979 Product version from 4/1/2024

Parts for other  
finishes can be found  
here: [Chrome](#)



## Spare parts list

No.	Item Number	Name	Quantity used	Delivery time
	20 09 24 03 073 90	nipple	1.00	2
	16 09 17 20 044-08	holder	1.00	40
	19 09 11 02 133-08	plate	1.00	40
	4 90 23 01 147 00 90	back-flow preventer	1.00	2
	13 90 21 02 069 00-08	cover	1.00	40
	10 90 31 11 004 00 90	pin	1.00	2
	1 04 12 11 073 01-08	spout	1.00	40
	7 09 31 11 026 90	pin	2.00	2
	2 90 30 02 072 00-08	Metal shower hose 1/2" x 3/8" x 1250 mm - Platinum	1.00	40
	18 05 30 31 025 00 90	fixing set	1.00	2
	12 09 24 03 107 20 90	nipple	1.00	2
	14 90 14 20 026 00 90	seal	1.00	2
	15 90 31 11 112 00 90	pin	1.00	2
	9 09 11 03 046-08	connection	1.00	40
	8 09 14 03 127 90	seal	1.00	2
	3 09 16 01 014 90	ring	1.00	2
	11 90 14 10 077 00 90	seal	1.00	2
	6 09 14 10 008 90	seal	1.00	2
	17 09 18 40 078 90	sleeve	1.00	2
	5 90 24 03 212 00 90	nipple	1.00	2