

Rain shower with wall fixing FlowReduce 220 mm - Brushed Durabrand (23kt Gold)

IMO

28 648 670



Fits: IMO, CYO

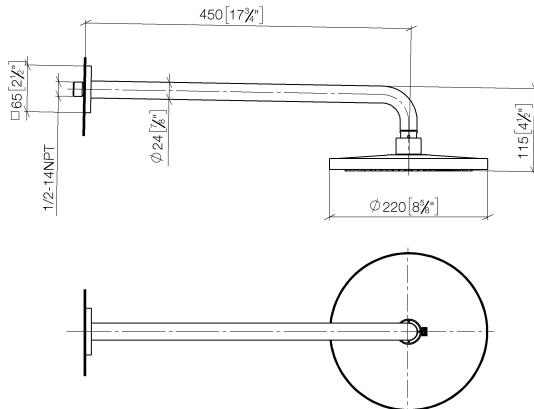
- 450mm projection
- rain shower Ø 220 mm
- rain flow
- max. flow 7 l/min
- Function from: 6 l/min
- rosette 65 x 65 mm
- 1/2" connection
- with anti-scale system
- quick clearing
- This product can help a building meet the requirements of Green Building Rating Systems, e.g. LEED®, BREEAM®, DGNB

| | | |
|--|-------------------------------|---------------|
|  | Brushed Durabrand (23kt Gold) | 28 648 670-28 |
|  | Chrome | 28 648 670-00 |
|  | Brushed Platinum | 28 648 670-06 |
|  | Platinum | 28 648 670-08 |
|  | Dark Chrome | 28 648 670-19 |
|  | Brushed Light Gold | 28 648 670-27 |
|  | Matte Black | 28 648 670-33 |
|  | Brushed Champagne (22kt Gold) | 28 648 670-46 |
|  | Champagne (22kt Gold) | 28 648 670-47 |
|  | Brushed Chrome | 28 648 670-93 |
|  | Brushed Dark Platinum | 28 648 670-99 |

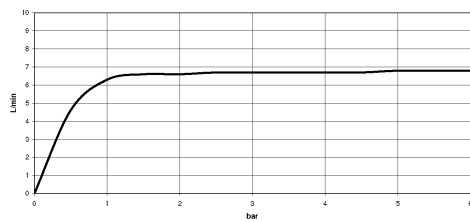
Rain shower with wall fixing FlowReduce 220 mm - Brushed Durabronz (23kt Gold)

IMO

28 648 670
mm [inches]



Flow rate chart



Codes & Standards

DIN 4109

ISO 3822

Ü-Zeichen



Rain shower with wall fixing FlowReduce 220 mm - Brushed Durabrass (23kt Gold)

IMO

28 648 670

Certificates

LGA_38

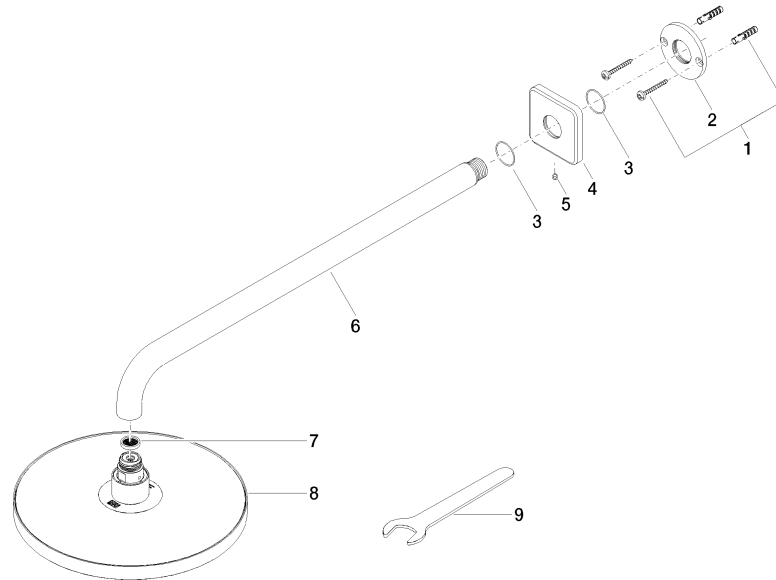
Rain shower with wall fixing FlowReduce 220 mm - Brushed Durabronz (23kt Gold)

IMO

28 648 670

Product version from 4/1/2024

Parts for other
finishes can be found
here: [Chrome](#)





Rain shower with wall fixing FlowReduce 220 mm - Brushed Durabrass (23kt Gold)

IMO

28 648 670

Spare parts list

Product version from 4/1/2024

| No. | Item Number | Name | Quantity used | Delivery time |
|-----|--------------------|------------|---------------|---------------|
| | 04 30 31 032 00 90 | fixing set | 9 | 2 |