

# Rain shower with wall fixing 300 x 240 mm - Platinum

IMO


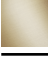



28 765 980



- 450mm projection
- rain shower 300 x 240mm
- PURE RAIN, max. flow rate 20 l/min (at 3 bar)
- Function from: 12 l/min
- rosette 60 x 60 mm
- 1/2" connection
- with anti-scale system
- quick clearing
- WRAS 2212012

Product change as of 1st April 2024: max. flow 20l/min

Fits: IMO, MEM, CL.1

|  |                               |               |
|--|-------------------------------|---------------|
|  | Platinum                      | 28 765 980-08 |
|  | Chrome                        | 28 765 980-00 |
|  | Brushed Platinum              | 28 765 980-06 |
|  | Brushed Light Gold            | 28 765 980-27 |
|  | Brushed Durabronz (23kt Gold) | 28 765 980-28 |
|  | Matte Black                   | 28 765 980-33 |
|  | Brushed Chrome                | 28 765 980-93 |
|  | Brushed Dark Platinum         | 28 765 980-99 |

## Recommended miscellaneous



- Concealed wall elbow -**
- max. recess depth 163 mm
  - min. recess depth 90 mm

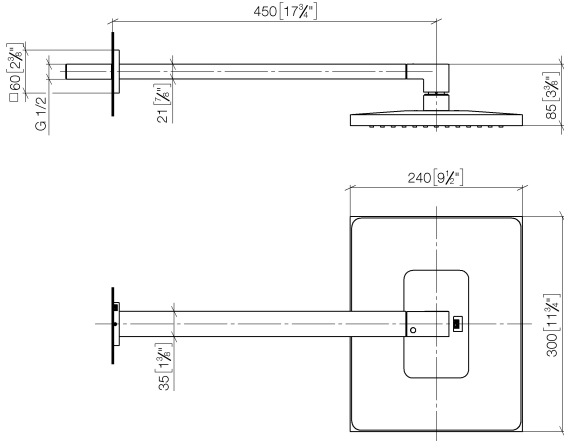
35 085 970 90

## Rain shower with wall fixing 300 x 240 mm - Platinum

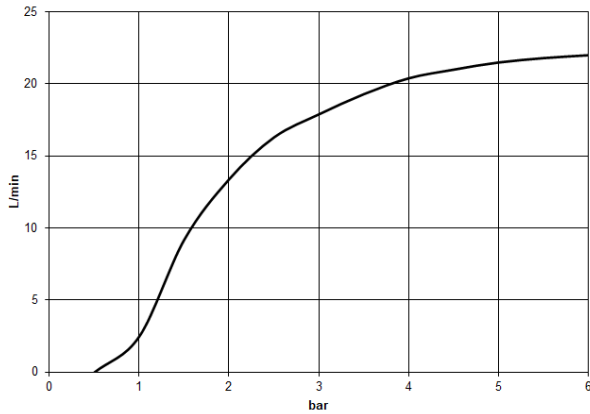
IMO

28 765 980

mm [inches]



### Flow rate chart



### Codes & Standards

DIN 4109

ISO 3822

Scottish Water  
Byelaws

UK Water Supply  
Regulations

Ü-Zeichen



## Rain shower with wall fixing 300 x 240 mm - Platinum

IMO

28 765 980

### Certificates

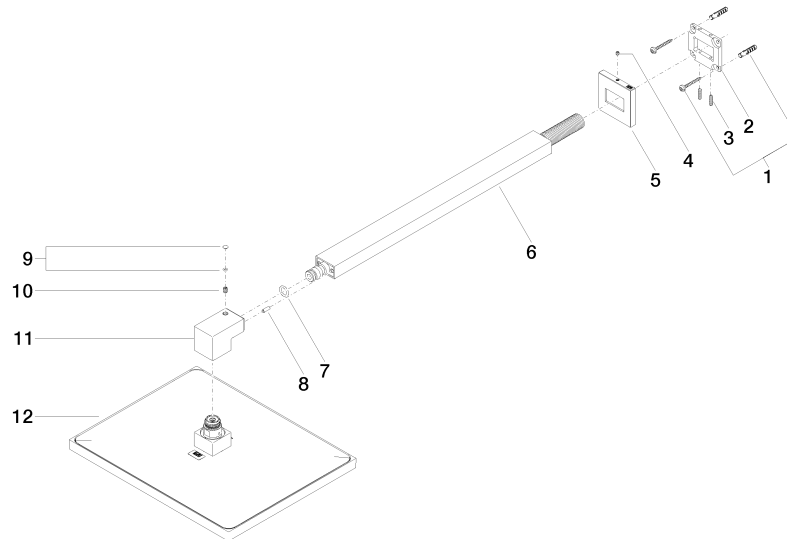
WRAS\_2212

LGA\_29

LGA\_38

28 765 980

**Product version from 3/13/2017**





## Rain shower with wall fixing 300 x 240 mm - Platinum

IMO

28 765 980

### Spare parts list

#### Product version from 3/13/2017

| No. | Item Number        | Name       | Quantity used | Delivery time |
|-----|--------------------|------------|---------------|---------------|
|     | 04 30 31 032 00 90 | fixing set | 13            | 2             |