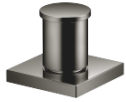


## Two-way diverter for bath rim or tile edge installation - Dark Chrome

SERIES SPECIFIC

29 140 670 Product version from 6/30/2015

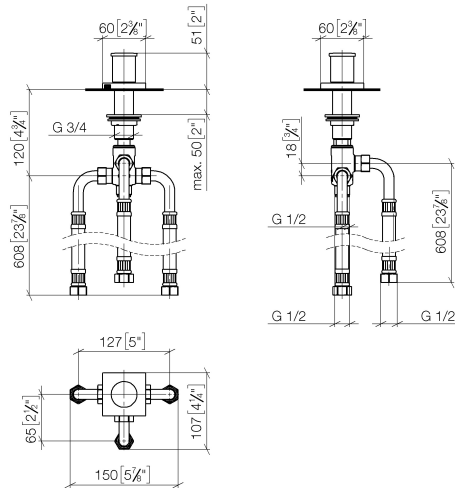


- automatic bath/shower diverter
- hole diameter 32 mm
- rosette 60 x 60 mm
- 1/2" connection
- max. flow 64.9 l/min at 3 bar flow pressure
- WRAS

	Dark Chrome	29 140 670-19
	Chrome	29 140 670-00
	Brushed Platinum	29 140 670-06
	Platinum	29 140 670-08
	Brushed Light Gold	29 140 670-27
	Brushed Durabrass (23kt Gold)	29 140 670-28
	Matte Black	29 140 670-33
	Brushed Champagne (22kt Gold)	29 140 670-46
	Champagne (22kt Gold)	29 140 670-47
	Brushed Chrome	29 140 670-93
	Brushed Dark Platinum	29 140 670-99

29 140 670 Product version from 6/30/2015

mm [inches]



### Flow rate chart



### Codes & Standards

ASME A112.18.1      cUPC      DIN 4109      ISO 3822

### Ü-Zeichen



## Two-way diverter for bath rim or tile edge installation - Dark Chrome

SERIES SPECIFIC

29 140 670 Product version from 6/30/2015

Certificates and sustainability

LGA\_29

IAPMO\_4976

## Two-way diverter for bath rim or tile edge installation - Dark Chrome

SERIES SPECIFIC

29 140 670 Product version from 6/30/2015

Parts for other  
finishes can be found  
here: [Chrome](#)



### Spare parts list

No.	Item Number	Name	Quantity used	Delivery time
7	09 14 05 014 90	seal	1.00	2
4	09 16 01 012-19	ring	1.00	20
8	09 14 40 002 90	seal	1.00	2
1	09 20 71 003-19	handle	1.00	20
5	09 27 67 006-19	rosette	1.00	60
9	09 23 10 004 90	nut	1.00	2
2	90 30 30 014 00 90	screw	1.00	2
6	90 14 10 043 00 90	seal	1.00	2
3	09 20 71 002-19	handle	1.00	20
10	90 17 09 051 00 90	diverter	1.00	2