

MEM Single-lever basin mixer -

MEM

29 210 782



- hole diameter 35 mm
- rosette 60 x 60 mm
- 3x screw-in M 10 x 1 pressure hose, leak-tested

29 210 782-43

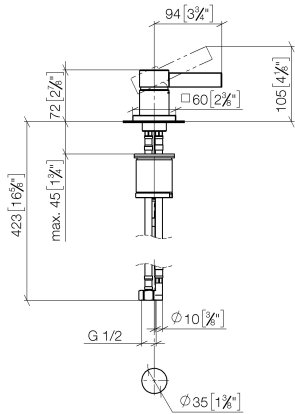
| | | |
|--|-------------------------------------|---------------|
|  | Chrome | 29 210 782-00 |
|  | Brushed Platinum | 29 210 782-06 |
|  | Platinum | 29 210 782-08 |
|  | Dark Chrome | 29 210 782-19 |
|  | Brushed Durabronze (23kt Gold) | 29 210 782-28 |
| | | 29 210 782-39 |
|  | Brushed Bronze | 29 210 782-42 |
|  | Brushed Champagne (22kt Gold) | 29 210 782-46 |
|  | Champagne (22kt Gold) | 29 210 782-47 |
|  | Brushed Dark Platinum | 29 210 782-99 |

MEM Single-lever basin mixer -

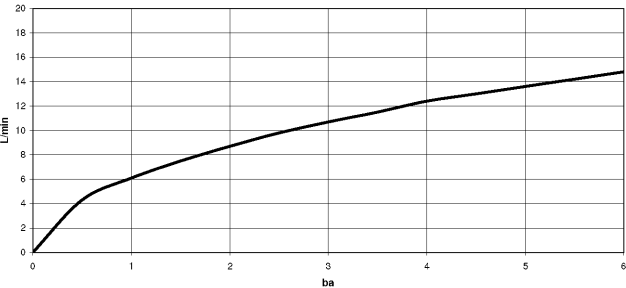
MEM

29 210 782

mm [inches]



Flow rate chart



Codes & Standards

Executive Order
no. 1007



MEM Single-lever basin mixer -

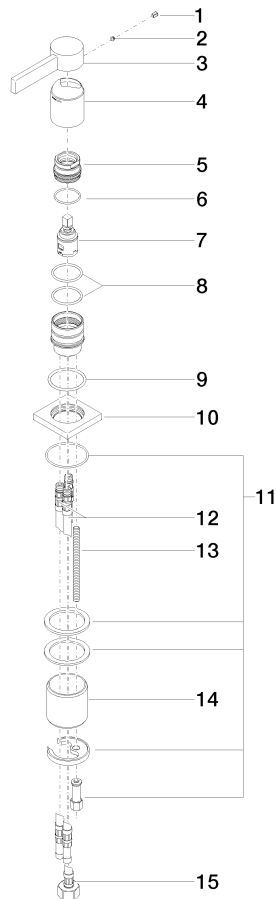
MEM

29 210 782

Certificates

GDV_0400

Parts for other
finishes can be found
here: [Chrome](#)





MEM Single-lever basin mixer -

MEM

29 210 782

Spare parts list