

## META Single-lever bath mixer for wall mounting without shower set - Brushed Platinum

META

33 200 660



- 202mm projection
- circular normal flow
- automatic bath/shower diverter
- 3/8" shower outlet
- slide-on rosettes Ø 60 mm
- 1/2" connection
- gauge 150 mm - 15 mm
- max. flow 14 l/min at 3 bar flow pressure
- WRAS 2207043

Intrinsic protection against back flow.

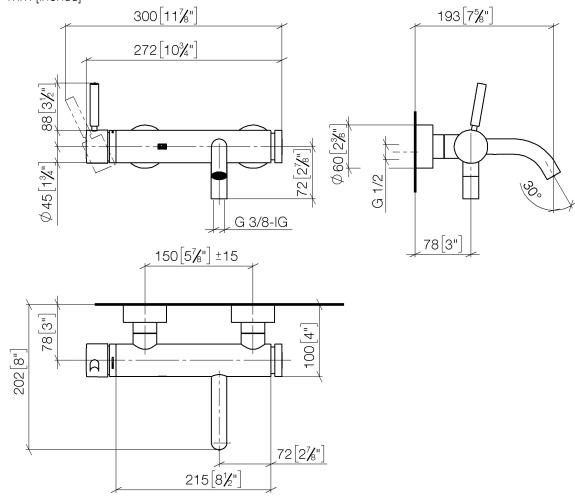
|  |                               |               |
|--|-------------------------------|---------------|
|    | Brushed Platinum              | 33 200 660-06 |
|    | Chrome                        | 33 200 660-00 |
|    | Dark Chrome                   | 33 200 660-19 |
|    | Light Gold                    | 33 200 660-26 |
|    | Brushed Light Gold            | 33 200 660-27 |
|    | Matte Black                   | 33 200 660-33 |
|    | Brushed Bronze                | 33 200 660-42 |
|    | Brushed Champagne (22kt Gold) | 33 200 660-46 |
|    | Champagne (22kt Gold)         | 33 200 660-47 |
|   | Brushed Chrome                | 33 200 660-93 |
|  | Brushed Dark Platinum         | 33 200 660-99 |

## META Single-lever bath mixer for wall mounting without shower set - Brushed Platinum

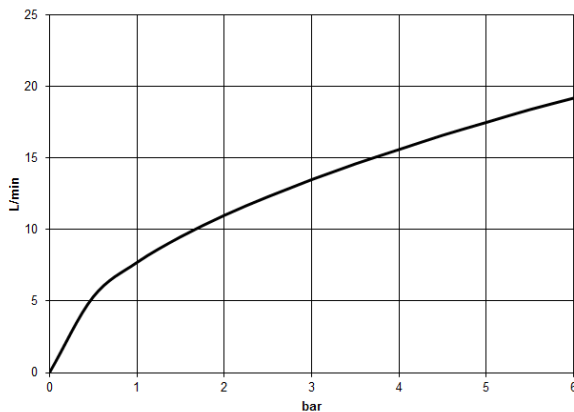
META

33 200 660

mm [inches]



### Flow rate chart



### Codes & Standards

DIN 4109

EN 1717

ISO 3822

Scottish Water  
Byelaws

UK Water Supply  
Regulations

Ü-Zeichen



## META Single-lever bath mixer for wall mounting without shower set - Brushed Platinum

---

META

33 200 660

Certificates

---

Belgaqua\_21-025-2 LGA\_29

WRAS\_2207

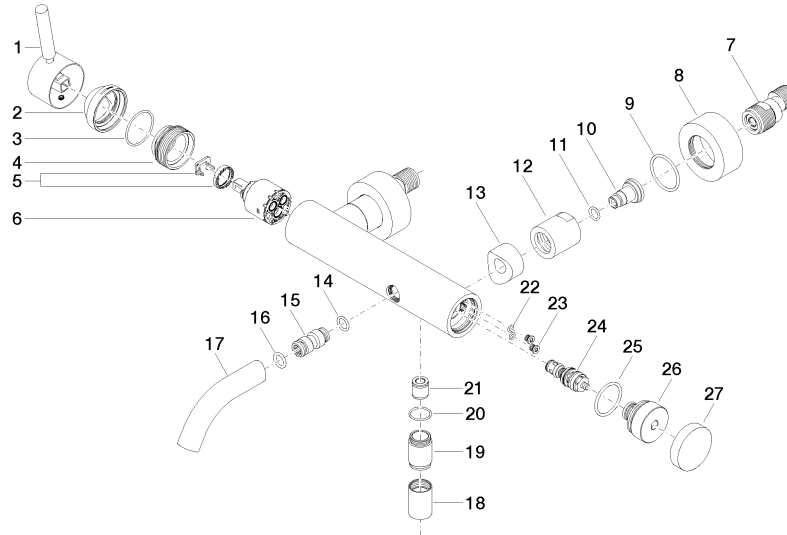
# META Single-lever bath mixer for wall mounting without shower set - Brushed Platinum

META

33 200 660

**Product version from 7/1/2023**

Parts for other  
finishes can be found  
here: [Chrome](#)





META Single-lever bath mixer for wall mounting without shower set - Brushed  
Platinum

META

33 200 660

**Spare parts list**

**Product version from 7/1/2023**

| No. | Item Number        | Name   | Quantity used | Delivery time |
|-----|--------------------|--------|---------------|---------------|
|     | 90 20 66 007 00-06 | handle | 36            | 10            |