

IMO Single-lever bath mixer for wall mounting without shower set - Chrome

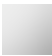





IMO

33 200 671
Product version from 4/1/2024

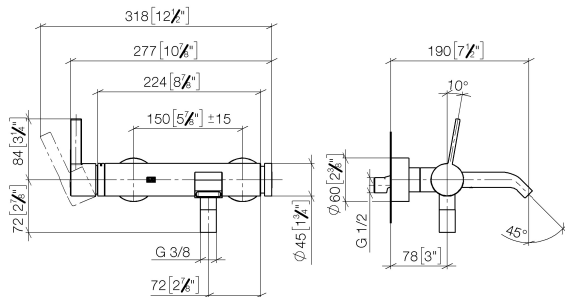


- 190mm projection
- rectangular normal flow
- automatic bath/shower diverter
- 3/8" shower outlet
- slide-on rosettes Ø 60 mm
- 1/2" connection
- gauge 150 mm - 15 mm
- max. flow 16.7 l/min at 3 bar flow pressure

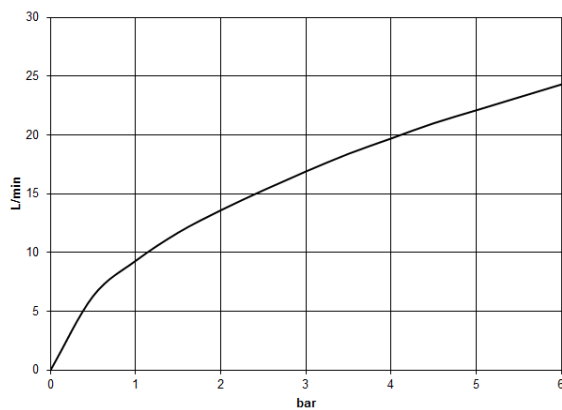
Intrinsic protection against back flow.

|   |                       |               |
|---|-----------------------|---------------|
|  | Chrome                | 33 200 671-00 |
|  | Brushed Platinum      | 33 200 671-06 |
|  | Dark Chrome           | 33 200 671-19 |
|  | Matte Black           | 33 200 671-33 |
|  | Brushed Chrome        | 33 200 671-93 |
|  | Brushed Dark Platinum | 33 200 671-99 |

mm [inches]



### Flow rate chart



### Codes & Standards

DIN 4109

ISO 3822

Scottish Water  
Byelaws

UK Water Supply  
Regulations

Ü-Zeichen



## IMO Single-lever bath mixer for wall mounting without shower set - Chrome

IMO

33 200 671 Product version from 4/1/2024

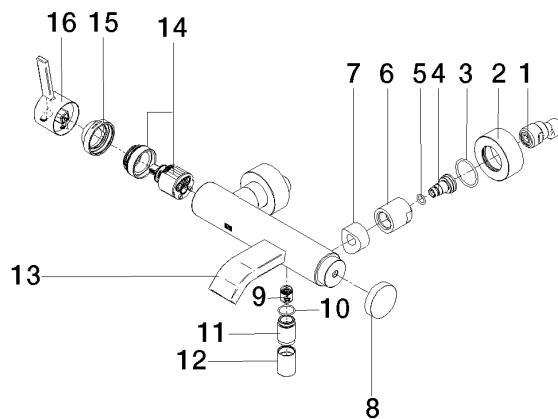
### Certificates and sustainability

LGA\_38

WRAS\_250102

33 200 671 Product version from 4/1/2024

Parts for other finishes can be found here: [Brushed Platinum](#)



## Spare parts list

| No. | Item Number        | Name                | Quantity used | Delivery time |
|-----|--------------------|---------------------|---------------|---------------|
| 11  | 09 24 03 115 20-00 | nipple              | 1.00          | 10            |
| 6   | 09 23 10 048-00    | nut                 | 2.00          | 10            |
| 16  | 90 20 67 020 00-00 | handle              | 1.00          | 10            |
| 12  | 90 21 02 069 00-00 | cover               | 1.00          | 10            |
| 1   | 04 11 04 030 00 90 | connection          | 1.00          | 2             |
| 2   | 09 27 62 004-00    | rosette             | 2.00          | 10            |
| 8   | 09 20 62 031-00    | handle              | 1.00          | 10            |
| 15  | 09 28 30 032-00    | cover               | 1.00          | 10            |
| 5   | 09 14 10 008 90    | seal                | 2.00          | 2             |
| 3   | 09 14 10 119 90    | seal                | 2.00          | 2             |
| 10  | 90 14 10 032 00 90 | seal                | 1.00          | 2             |
| 9   | 90 23 01 141 00 90 | back-flow preventer | 1.00          | 2             |
| 14  | 90 15 05 046 01 90 | cartridge           | 1.00          | 2             |
| 4   | 09 29 05 005 20 90 | nipple              | 2.00          | 60            |
| 13  | 90 11 06 228 00-00 | spout               | 1.00          | 10            |
| 7   | 09 18 40 059-00    | sleeve              | 2.00          | 10            |