

## MEM Single-lever basin mixer with pop-up waste - Chrome

MEM

33 502 782 Product version from 9/1/2022



- 113mm projection
- fixed spout
- rectangular, air-enriched flow
- height of mixer 284 mm
- height up to aerator 216 mm
- hole diameter 35 mm
- 2x screw-in M 10 x 1 pressure hose, leak-tested
- max. flow 5.7 l/min
- lead-free
- This product can help a building meet the requirements of Green Building Rating Systems, e.g. LEED®, BREEAM®, DGNB

Only suitable for basins with an overflow.

|   |                                |               |
|---|--------------------------------|---------------|
|  | Chrome                         | 33 502 782-00 |
|  | Brushed Platinum               | 33 502 782-06 |
|  | Platinum                       | 33 502 782-08 |
|  | Dark Chrome                    | 33 502 782-19 |
|  | Brushed Durabronze (23kt Gold) | 33 502 782-28 |
|  | Brushed Champagne (22kt Gold)  | 33 502 782-46 |
|  | Champagne (22kt Gold)          | 33 502 782-47 |
|  | Brushed Dark Platinum          | 33 502 782-99 |

## MEM Single-lever basin mixer with pop-up waste - Chrome

MEM

33 502 782 Product version from 9/1/2022



### Flow rate chart



### Codes & Standards

DIN 4109

Executive Order  
no. 1007

ISO 3822

Ü-Zeichen



## MEM Single-lever basin mixer with pop-up waste - Chrome

---

MEM

33 502 782 Product version from 9/1/2022

Certificates and sustainability

---

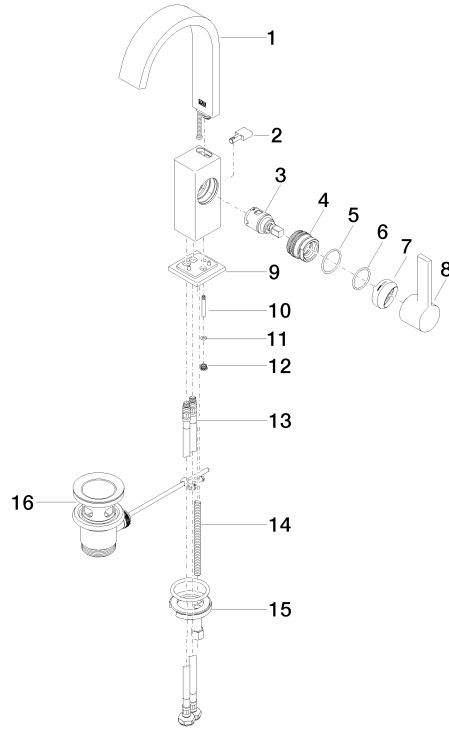
LGA\_28

GDV\_0400

# MEM Single-lever basin mixer with pop-up waste - Chrome

MEM

33 502 782 Product version from 9/1/2022



## Spare parts list

| No. | Item Number        | Name         | Quantity used | Delivery time |
|-----|--------------------|--------------|---------------|---------------|
| 4   | 09 24 04 288 90    | nut          | 1.00          | 2             |
| 3   | 90 15 05 042 00 90 | cartridge    | 1.00          | 2             |
| 1   | 90 28 22 365 10-00 | spout        | 1.00          | 10            |
| 12  | 09 24 04 290 90    | nipple       | 1.00          | 2             |
| 11  | 09 14 10 166 90    | seal         | 1.00          | 2             |
| 2   | 09 20 78 032-00    | handle       | 1.00          | 10            |
| 14  | 09 31 11 012 90    | pin          | 1.00          | 2             |
| 8   | 90 20 86 004 00-00 | handle       | 1.00          | 10            |
| 13  | 04 30 04 100 00 90 | hose         | 2.00          | 2             |
| 7   | 90 28 30 051 00-00 | cover        | 1.00          | 10            |
| 9   | 90 27 66 021 00-00 | rosette      | 1.00          | 10            |
| 5   | 09 14 10 137 90    | seal         | 1.00          | 2             |
| 15  | 04 30 11 038 00 90 | fixing set   | 1.00          | 2             |
| 10  | 09 31 09 080-00    | pull-rod     | 1.00          | 10            |
| 16  | 90 11 01 001 00-00 | pop-up waste | 1.00          | 10            |
| 6   | 90 14 10 063 00 90 | seal         | 1.00          | 2             |