

MEM Single-lever basin mixer with pop-up waste - Brushed Durabrass (23kt Gold)



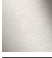





MEM

33 502 782 Product version from 9/1/2022



- 113mm projection
- fixed spout
- rectangular, air-enriched flow
- height of mixer 284 mm
- height up to aerator 216 mm
- hole diameter 35 mm
- 2x screw-in M 10 x 1 pressure hose, leak-tested
- max. flow 5.7 l/min
- lead-free
- This product can help a building meet the requirements of Green Building Rating Systems, e.g. LEED®, BREEAM®, DGNB

Only suitable for basins with an overflow.

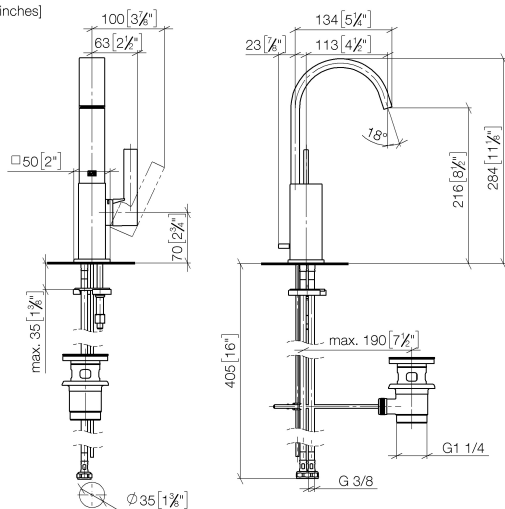
	Brushed Durabrass (23kt Gold)	33 502 782-28
	Chrome	33 502 782-00
	Brushed Platinum	33 502 782-06
	Platinum	33 502 782-08
	Dark Chrome	33 502 782-19
	Brushed Champagne (22kt Gold)	33 502 782-46
	Champagne (22kt Gold)	33 502 782-47
	Brushed Dark Platinum	33 502 782-99

MEM Single-lever basin mixer with pop-up waste - Brushed Durabron (23kt Gold)

MEM

33 502 782 Product version from 9/1/2022

mm [inches]



Flow rate chart



Codes & Standards

DIN 4109

Executive Order
no. 1007

ISO 3822

Ü-Zeichen



MEM Single-lever basin mixer with pop-up waste - Brushed Durabross (23kt Gold)

MEM

33 502 782 Product version from 9/1/2022

Certificates and sustainability

LGA_28

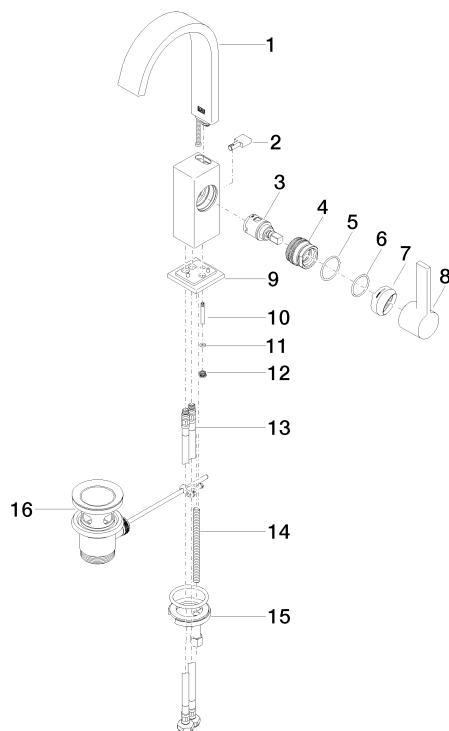
GDV_0400

MEM Single-lever basin mixer with pop-up waste - Brushed Durabross (23kt Gold)

MEM

33 502 782 Product version from 9/1/2022

Parts for other
finishes can be found
here: [Chrome](#)



Spare parts list

No.	Item Number	Name	Quantity used	Delivery time
	5 09 14 10 137 90	seal	1.00	2
	10 09 31 09 080-28	pull-rod	1.00	20
	8 90 20 86 004 00-28	handle	1.00	20
	7 90 28 30 051 00-28	cover	1.00	20
	15 04 30 11 038 00 90	fixing set	1.00	2
	12 09 24 04 290 90	nipple	1.00	2
	3 90 15 05 042 00 90	cartridge	1.00	2
	11 09 14 10 166 90	seal	1.00	2
	4 09 24 04 288 90	nut	1.00	2
	13 04 30 04 100 00 90	hose	2.00	2
	14 09 31 11 012 90	pin	1.00	2
	9 90 27 66 021 00-28	rosette	1.00	20
	1 90 28 22 365 10-28	spout	1.00	20
	2 09 20 78 032-28	handle	1.00	20
	16 90 11 01 001 00-28	pop-up waste	1.00	20
	6 90 14 10 063 00 90	seal	1.00	2