



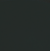


EDITION PRO GRANDE Single-lever basin mixer without pop-up waste -
Brushed Chrome

33 522 626

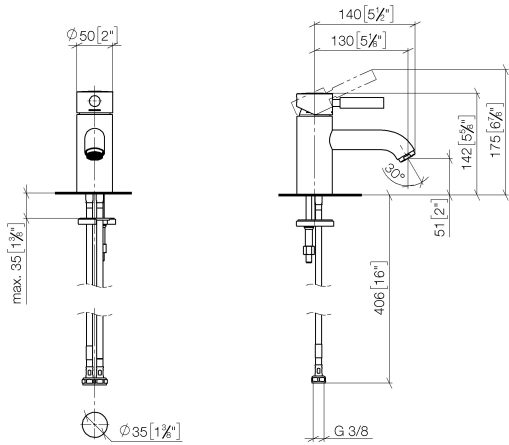


- 130mm projection
- fixed spout
- circular, air-enriched flow
- height of mixer 142 mm
- height up to aerator 51 mm
- hole diameter 35 mm
- 2x screw-in M 10 x 1 pressure hose, leak-tested
- max. flow 7 l/min
- lead-free
- WRAS

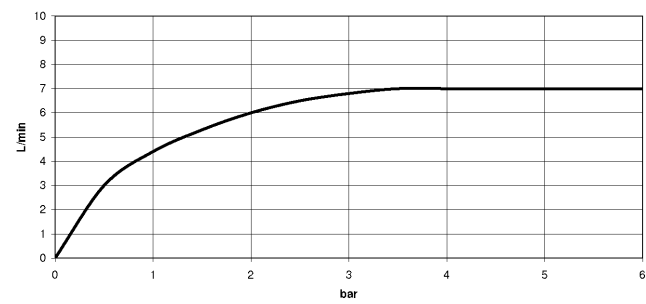
| | | |
|---|----------------|---------------|
|  | Brushed Chrome | 33 522 626-93 |
|  | Chrome | 33 522 626-00 |
|  | Matte Black | 33 522 626-33 |

**EDITION PRO GRANDE Single-lever basin mixer without pop-up waste -
Brushed Chrome**

33 522 626
mm [inches]



Flow rate chart



Codes & Standards

DIN 4109

ISO 3822

Scottish Water
Byelaws

UK Water Supply
Regulations

Ü-Zeichen



EDITION PRO GRANDE Single-lever basin mixer without pop-up waste -
Brushed Chrome

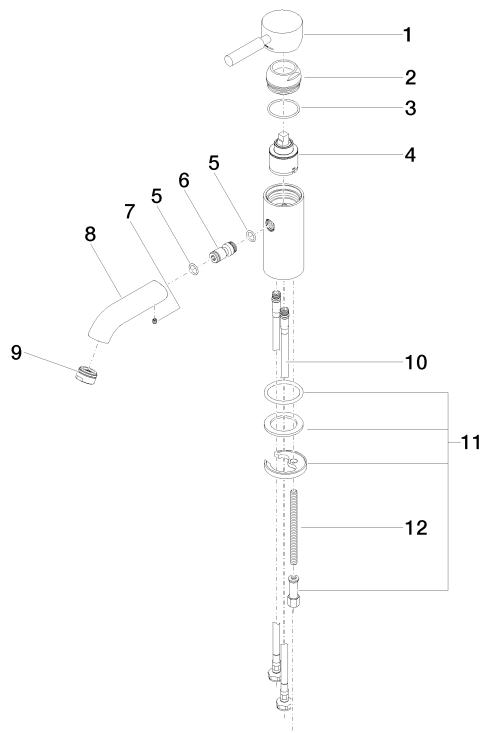
33 522 626
Certificates

| | | |
|-----------|-------|-------------|
| WRAS_1805 | LGA_9 | WRAS_240602 |
|-----------|-------|-------------|

EDITION PRO GRANDE Single-lever basin mixer without pop-up waste - Brushed Chrome

33 522 626

Parts for other
finishes can be found
here: [Chrome](#)



Spare parts list

| No. | Item Number | Name | Quantity used | Delivery time |
|--|--------------------|------------|---------------|---------------|
| 1 | 90 20 62 047 00-93 | handle | 1 | 20 |
| 2 | 09 28 30 016-93 | cover | 1 | 20 |
| 3 | 09 14 10 134 90 | seal | 1 | 2 |
| 4 | 90 15 05 045 00 90 | cartridge | 1 | 2 |
| 5 | 09 14 10 003 90 | seal | 1 | 2 |
| 6 | 09 24 04 025 10 90 | nipple | 1 | 2 |
| 7 | 90 31 11 030 00 90 | pin | 1 | 2 |
| 8 | 09 11 06 063 10-93 | spout | 1 | 20 |
| 9 | 90 23 01 118 01-93 | aerator | 1 | - |
| Spare part can no longer be ordered, please order the replacement item | | | | |
| 10 | 04 30 04 104 00 90 | hose | 2 | 2 |
| 11 | 04 30 11 038 00 90 | fixing set | 1 | 2 |
| 12 | 09 31 11 012 90 | pin | 1 | 2 |