



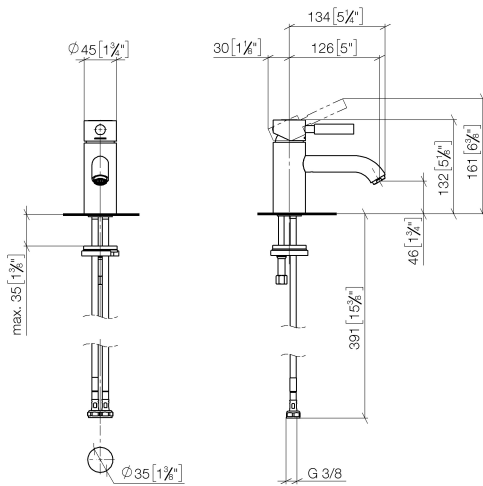


EDITION PRO Single-lever basin mixer without pop-up waste - Brushed Chrome

EDITION PRO

33 526 626			
	<ul style="list-style-type: none"> <li>• 126mm projection</li> <li>• fixed spout</li> <li>• circular, air-enriched flow</li> <li>• height of mixer 132 mm</li> <li>• height up to aerator 46 mm</li> <li>• hole diameter 35 mm</li> <li>• 2x screw-in M 10 x 1 pressure hose, leak-tested</li> <li>• max. flow 7 l/min</li> <li>• lead-free</li> <li>• WRAS</li> </ul>		Brushed Chrome 33 526 626-93
			Chrome 33 526 626-00
			Matte Black 33 526 626-33

33 526 626  
mm [inches]



Flow rate chart



### Codes & Standards

DIN 4109

ISO 3822

Scottish Water  
Byelaws

UK Water Supply  
Regulations

Ü-Zeichen



## EDITION PRO Single-lever basin mixer without pop-up waste - Brushed Chrome

---

EDITION PRO

33 526 626

Certificates and sustainability

---

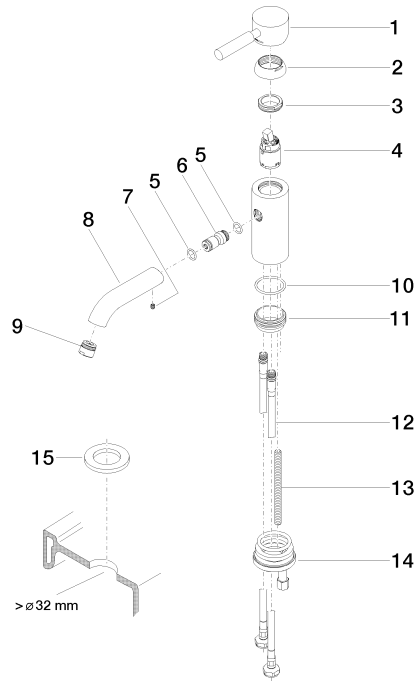
LGA\_9

WRAS\_240502

## EDITION PRO Single-lever basin mixer without pop-up waste - Brushed Chrome

EDITION PRO

33 526 626  
Parts for other  
finishes can be found  
here: [Chrome](#)



### Spare parts list

No.	Item Number	Name	Quantity used	Delivery time
5	09 14 10 003 90	seal	1.00	2
10	09 14 10 119 90	seal	1.00	2
13	09 31 11 012 90	pin	1.00	2
14	04 30 11 085 88 90	fixing set	1.00	2
3	09 24 04 130-07	nut	1.00	30
9	90 23 01 022 00-93	aerator	1.00	20
8	09 11 06 059 10-93	spout	1.00	20
11	09 28 10 109-07	ring	1.00	30
4	90 15 05 041 00 90	cartridge	1.00	2
12	04 30 04 104 00 90	hose	2.00	2
15	12 730 970-93	Rosette for tap hole cover - Brushed Chrome	1.00	10
6	09 24 04 025 10 90	nipple	1.00	2
1	90 20 62 046 00-93	handle	1.00	20
2	09 28 30 008-93	cover	1.00	20
7	90 31 11 030 00 90	pin	1.00	2