

VAIA Single-lever bidet mixer with pop-up waste - Chrome

VAIA

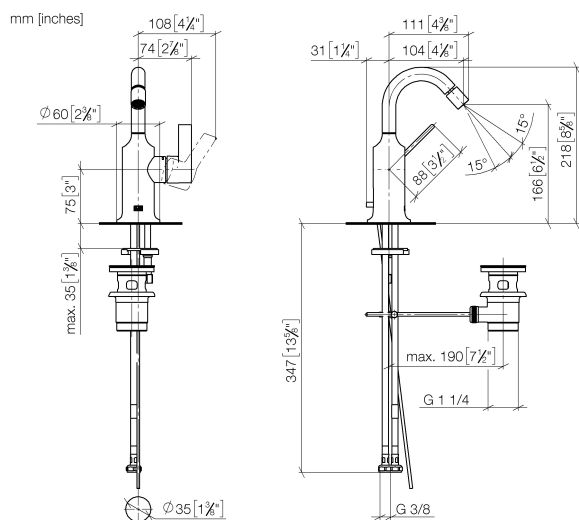
33 600 809 Product version from 3/13/2017



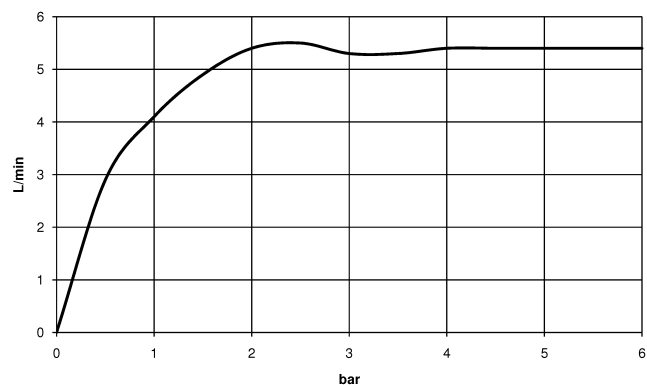
- 104mm projection
- ball-joint pivotable through 15° (in any direction)
- circular, air-enriched flow
- height of mixer 218 mm
- height up to aerator 166 mm
- hole diameter 35 mm
- rosette Ø 60 mm
- 2x screw-in M 10 x 1 pressure hose, leak-tested
- max. flow 5.7 l/min
- lead-free
- WRAS

| | | |
|---|-------------------------------------|---------------|
|  | Chrome | 33 600 809-00 |
|  | Brushed Platinum | 33 600 809-06 |
|  | Platinum | 33 600 809-08 |
|  | Dark Chrome | 33 600 809-19 |
|  | Brushed Durabronze (23kt Gold) | 33 600 809-28 |
|  | Brushed Dark Brass | 33 600 809-39 |
|  | Brushed Champagne (22kt Gold) | 33 600 809-46 |
|  | Champagne (22kt Gold) | 33 600 809-47 |
|  | Brushed Dark Platinum | 33 600 809-99 |

33 600 809 Product version from 3/13/2017



Flow rate chart



Codes & Standards

DIN 4109

ISO 3822

Scottish Water
Byelaws

UK Water Supply
Regulations

Ü-Zeichen



VAIA Single-lever bidet mixer with pop-up waste - Chrome

VAIA

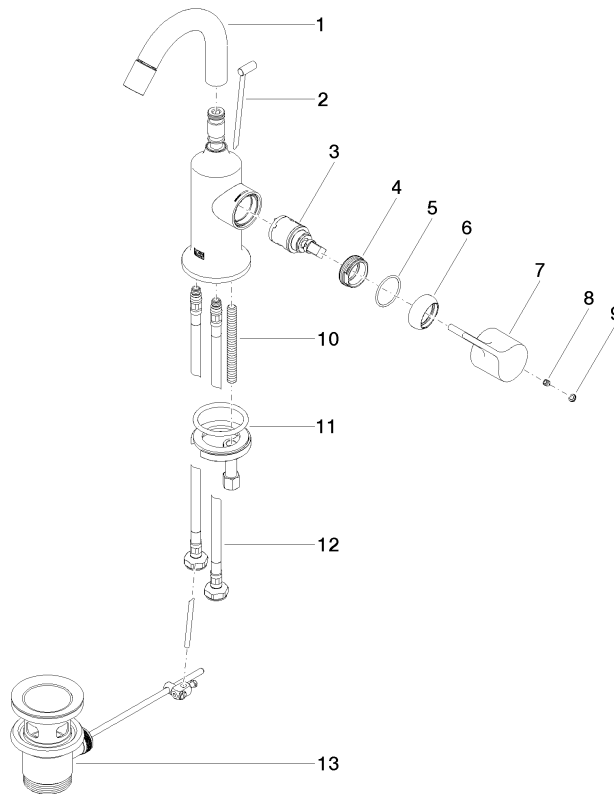
33 600 809 Product version from 3/13/2017

Certificates and sustainability

WRAS_1804

LGA_38

WRAS_240202



Spare parts list

| No. | Item Number | Name | Quantity used | Delivery time |
|-----|--------------------|--------------|---------------|---------------|
| 3 | 90 15 05 042 00 90 | cartridge | 1.00 | 2 |
| 1 | 90 28 22 314 00-00 | spout | 1.00 | 10 |
| 4 | 09 24 04 266 90 | nut | 1.00 | 2 |
| 6 | 09 28 30 021-00 | cover | 1.00 | 10 |
| 12 | 04 30 04 100 00 90 | hose | 2.00 | 2 |
| 7 | 09 20 80 020-00 | handle | 1.00 | 10 |
| 11 | 04 30 11 038 00 90 | fixing set | 1.00 | 2 |
| 10 | 09 31 11 011 90 | pin | 1.00 | 2 |
| 5 | 09 14 10 091 90 | seal | 1.00 | 2 |
| 9 | 90 31 20 087 00-00 | plug | 1.00 | 10 |
| 2 | 04 20 89 035 80-00 | pull-rod | 1.00 | 10 |
| 13 | 90 11 01 001 00-00 | pop-up waste | 1.00 | 10 |
| 8 | 90 31 11 030 00 90 | pin | 1.00 | 2 |