

## MEM Single-lever mixer - Brushed Durabron (23kt Gold)

MEM


33 800 682



- 201mm projection
- pivotable spout 360°
- Optional swivel limiter available with swivel limiter set 12 820 970 90
- air-enriched flow
- max. flow 6.3 l/min at 3 bar flow pressure
- lead-free
- This product can help a building meet the requirements of Green Building Rating Systems, e.g. LEED®, BREEAM®, DGNB
- WRAS 240202021

	Brushed Durabron (23kt Gold)	33 800 682-28
	Chrome	33 800 682-00
	Brushed Platinum	33 800 682-06
	Platinum	33 800 682-08
	Durabron (23kt Gold)	33 800 682-09
	Dark Chrome	33 800 682-19
	Matte Black	33 800 682-33
	Brushed Champagne (22kt Gold)	33 800 682-46
	Champagne (22kt Gold)	33 800 682-47
	Brushed Chrome	33 800 682-93
	Brushed Dark Platinum	33 800 682-99


### Recommended miscellaneous

	<b>Swivel limitation set -</b>	12 820 970 90
---	--------------------------------	---------------

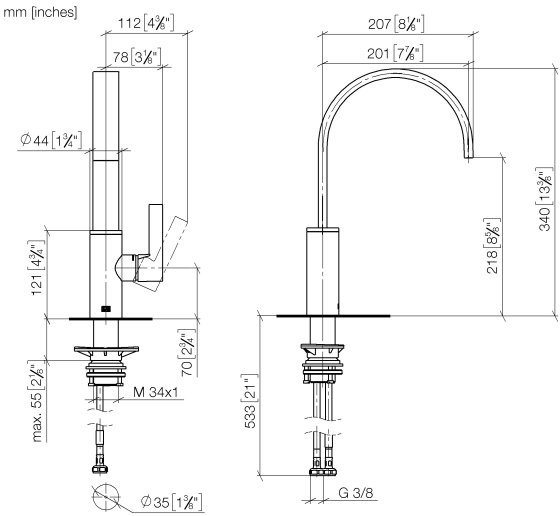
### Recommended miscellaneous

	<b>Strainer waste with control handle - Brushed Durabron (23kt Gold)</b>	10 712 970-28
---	--	---------------

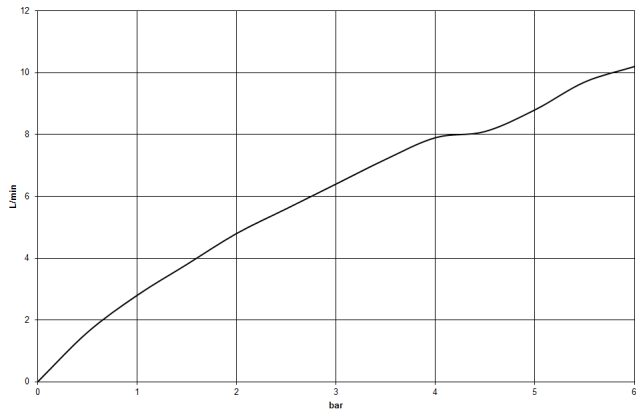
### Recommended miscellaneous

	<b>Dispenser without rosette - Brushed Durabron (23kt Gold)</b>	82 424 970-28
---	---	---------------

33 800 682



Flow rate chart



Codes & Standards

DIN 4109	ISO 3822	Scottish Water Byelaws	UK Water Supply Regulations
----------	----------	------------------------	-----------------------------

Ü-Zeichen



## MEM Single-lever mixer - Brushed Durabross (23kt Gold)

---

MEM

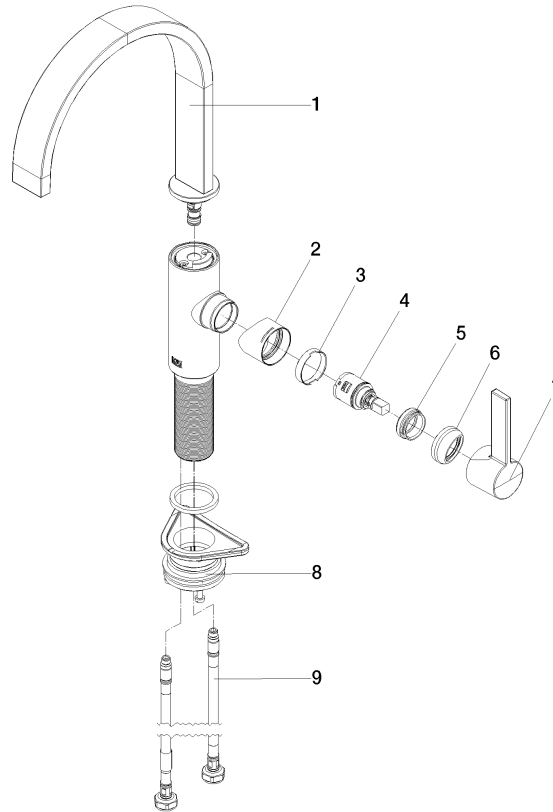
33 800 682

### Certificates

---

WRAS\_240202      LGA\_38

**Product version from 3/1/2023**





MEM Single-lever mixer - Brushed Durabross (23kt Gold)

MEM

33 800 682

Spare parts list

Product version from 3/1/2023

No.	Item Number	Name	Quantity used	Delivery time
	90 28 22 332 00-28	spout	10	-

Spare part can no longer be ordered, please order the replacement item