

MEM Single-lever mixer - Brushed Dark Platinum

MEM

33 800 682



- 201mm projection
- pivotable spout 360°
- Optional swivel limiter available with swivel limiter set 12 820 970 90
- air-enriched flow
- max. flow 6.3 l/min at 3 bar flow pressure
- lead-free
- This product can help a building meet the requirements of Green Building Rating Systems, e.g. LEED®, BREEAM®, DGNB
- WRAS 240202021

| | | |
|--|--------------------------------|---------------|
| | Brushed Dark Platinum | 33 800 682-99 |
| | Chrome | 33 800 682-00 |
| | Brushed Platinum | 33 800 682-06 |
| | Platinum | 33 800 682-08 |
| | Durabronze (23kt Gold) | 33 800 682-09 |
| | Dark Chrome | 33 800 682-19 |
| | Brushed Durabronze (23kt Gold) | 33 800 682-28 |
| | Matte Black | 33 800 682-33 |
| | Brushed Champagne (22kt Gold) | 33 800 682-46 |
| | Champagne (22kt Gold) | 33 800 682-47 |
| | Brushed Chrome | 33 800 682-93 |

Recommended miscellaneous

Swivel limitation set - 12 820 970 90



Recommended miscellaneous

Dispenser without rosette - 82 424 970-99
Brushed Dark Platinum

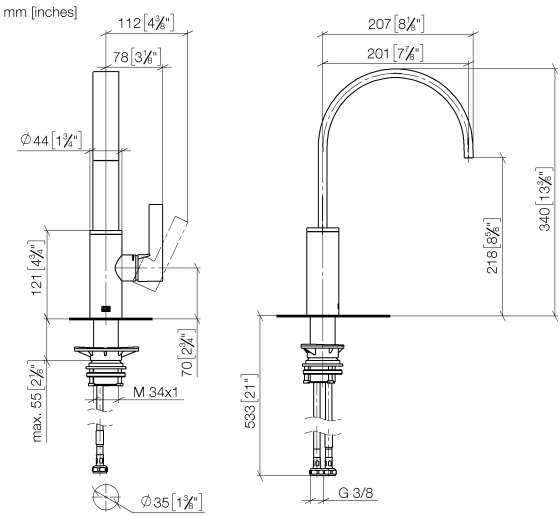


Recommended miscellaneous

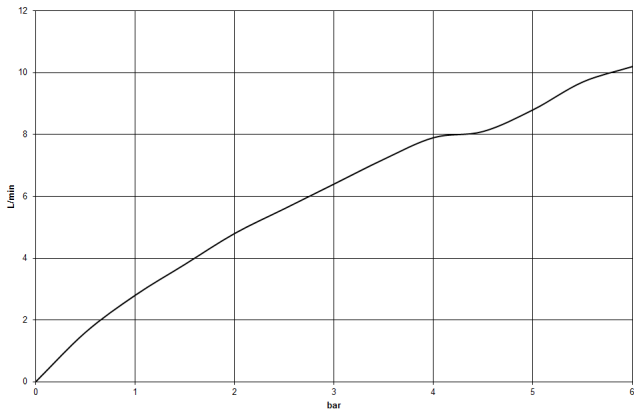
Strainer waste with control handle 10 712 970-99
- Brushed Dark Platinum



33 800 682



Flow rate chart



Codes & Standards

| | | | |
|----------|----------|------------------------|-----------------------------|
| DIN 4109 | ISO 3822 | Scottish Water Byelaws | UK Water Supply Regulations |
|----------|----------|------------------------|-----------------------------|

Ü-Zeichen



MEM Single-lever mixer - Brushed Dark Platinum

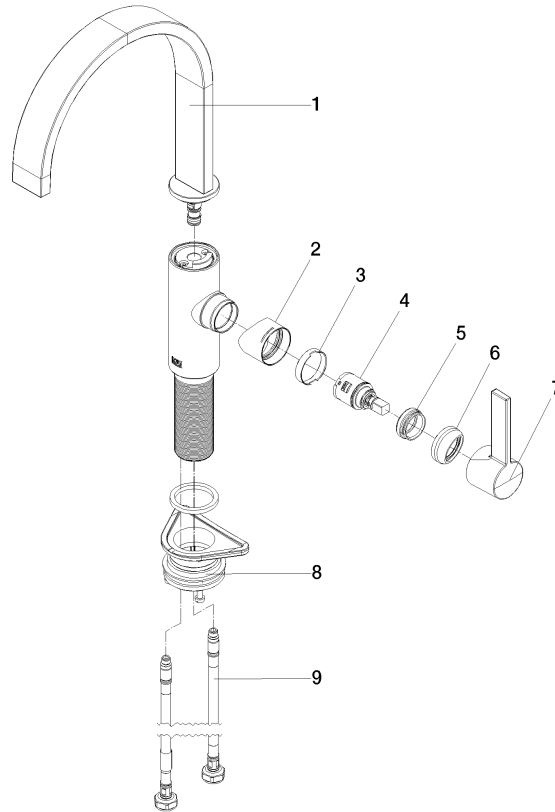
MEM

33 800 682

Certificates

WRAS_240202 LGA_38

Product version from 3/1/2023





MEM Single-lever mixer - Brushed Dark Platinum

MEM

33 800 682

Spare parts list

Product version from 3/1/2023

| No. | Item Number | Name | Quantity used | Delivery time |
|-----|--------------------|-------|---------------|---------------|
| | 90 28 22 332 00-99 | spout | 10 | - |

Spare part can no longer be ordered, please order the replacement item