

META SQUARE Single-lever mixer - Brushed Bronze

META SQUARE


33 800 861
Product version from 2/1/2023



- 200mm projection
- pivotable spout 360°
- Optional swivel limiter available with swivel limiter set 12 820 970 90
- air-enriched flow
- max. flow 8 l/min at 3 bar flow pressure
- lead-free
- This product can help a building meet the requirements of Green Building Rating Systems, e.g. LEED®, BREEAM®, DGNB
- WRAS

| | | |
|---|-------------------------------|---------------|
|  | Brushed Bronze | 33 800 861-42 |
|  | Chrome | 33 800 861-00 |
|  | Brushed Platinum | 33 800 861-06 |
|  | Platinum | 33 800 861-08 |
|  | Durabrass (23kt Gold) | 33 800 861-09 |
|  | Dark Chrome | 33 800 861-19 |
|  | Brushed Durabrass (23kt Gold) | 33 800 861-28 |
|  | Matte Black | 33 800 861-33 |
|  | Brushed Champagne (22kt Gold) | 33 800 861-46 |
|  | Champagne (22kt Gold) | 33 800 861-47 |
|  | Brushed Chrome | 33 800 861-93 |
|  | Brushed Dark Platinum | 33 800 861-99 |


Recommended miscellaneous

| | | |
|---|--------------------------------|---------------|
|  | Swivel limitation set - | 12 820 970 90 |
|---|--------------------------------|---------------|

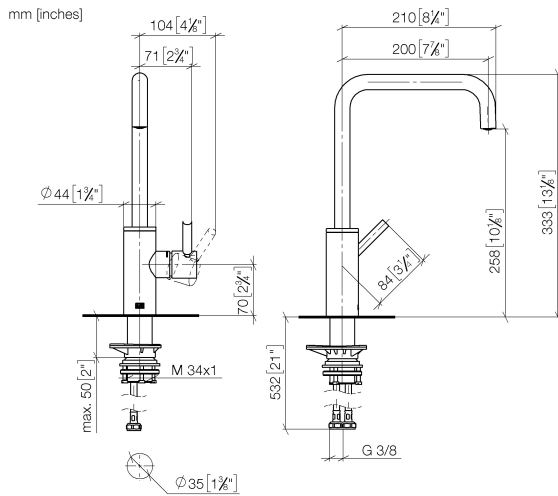
Recommended miscellaneous

| | | |
|---|---|---------------|
|  | Dispenser without rosette - Brushed Bronze | 82 424 970-42 |
|---|---|---------------|

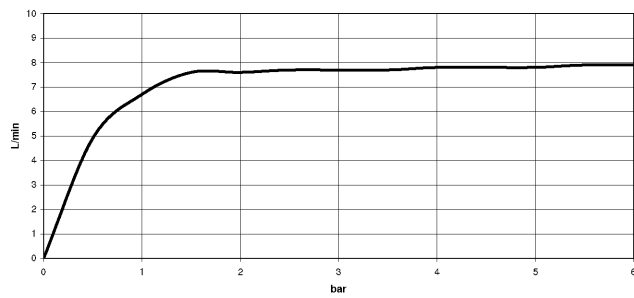
Recommended miscellaneous

| | | |
|---|--|---------------|
|  | Strainer waste with control handle - Brushed Bronze | 10 712 970-42 |
|---|--|---------------|

33 800 861 Product version from 2/1/2023



Flow rate chart



Codes & Standards

DIN 4109

ISO 3822

Scottish Water
Byelaws

UK Water Supply
Regulations

Ü-Zeichen



META SQUARE Single-lever mixer - Brushed Bronze

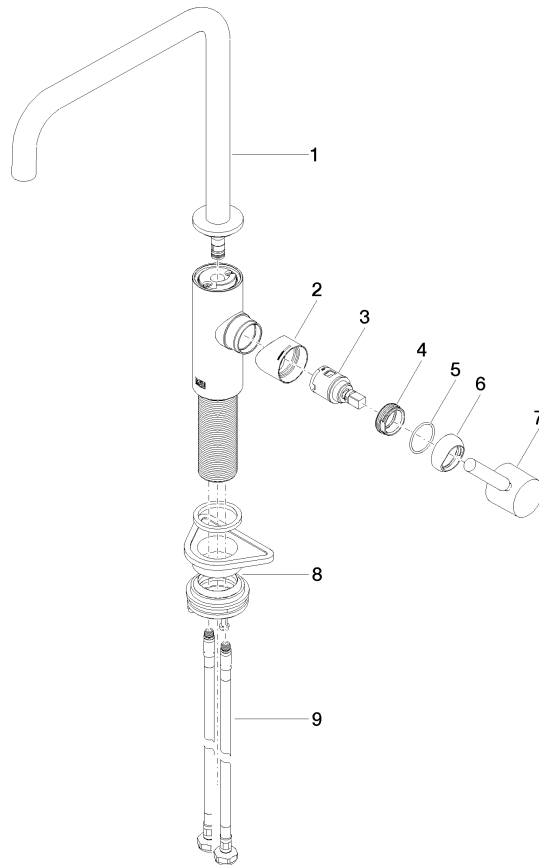
META SQUARE

33 800 861 Product version from 2/1/2023

Certificates and sustainability

LGA_38

WRAS_240102



Spare parts list

| No. | Item Number | Name | Quantity used | Delivery time |
|-----|--------------------|------------|---------------|---------------|
| 6 | 90 28 30 052 00-42 | cover | 1.00 | 30 |
| 7 | 90 20 66 003 00-42 | handle | 1.00 | 30 |
| 1 | 90 28 22 334 00-42 | spout | 1.00 | 30 |
| 3 | 90 15 05 042 00 90 | cartridge | 1.00 | 2 |
| 8 | 04 23 10 044 08 90 | fixing set | 1.00 | 2 |
| 9 | 04 30 04 101 00 90 | hose | 2.00 | 2 |
| 4 | 09 24 04 266 90 | nut | 1.00 | 2 |
| 2 | 09 19 86 012-42 | cover | 1.00 | 60 |
| 5 | 09 14 10 091 90 | seal | 1.00 | 2 |