

TARA BAR TAP Single-lever mixer - Chrome

TARA

33 805 888



- 166mm projection
- pivotable spout 360°
- laminar flow
- height of mixer 302 mm
- height up to laminar flow regulator 185 mm
- hole diameter 35 mm
- max. flow 8.3 l/min at 3 bar flow pressure
- lead-free
- This product can help a building meet the requirements of Green Building Rating Systems, e.g. LEED®, BREEAM®, DGNB
- WRAS 240102012

| | | |
|--|-------------------------------|---------------|
| | Chrome | 33 805 888-00 |
| | Brushed Platinum | 33 805 888-06 |
| | Platinum | 33 805 888-08 |
| | Durabrand (23kt Gold) | 33 805 888-09 |
| | Dark Chrome | 33 805 888-19 |
| | Brushed Durabrand (23kt Gold) | 33 805 888-28 |
| | Matte Black | 33 805 888-33 |
| | Brushed Champagne (22kt Gold) | 33 805 888-46 |
| | Champagne (22kt Gold) | 33 805 888-47 |
| | Brushed Chrome | 33 805 888-93 |
| | Brushed Dark Platinum | 33 805 888-99 |

Recommended miscellaneous

Strainer waste with control handle - Chrome 10 710 970-00



Recommended miscellaneous

Dispenser with rosette - Chrome 82 444 970-00

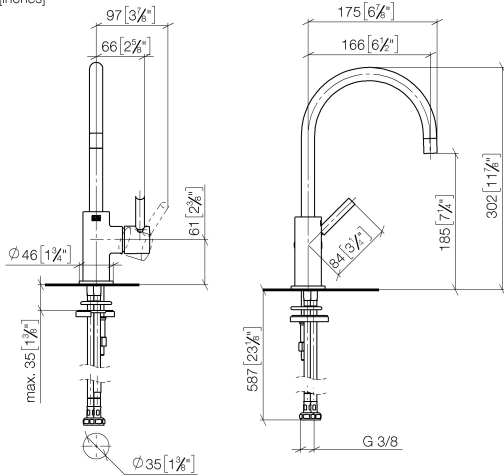


TARA BAR TAP Single-lever mixer - Chrome

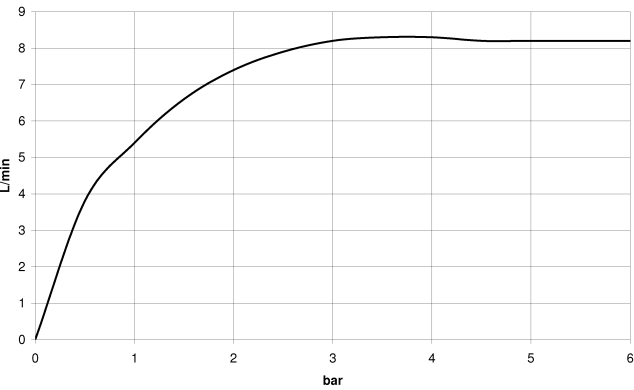
TARA

33 805 888

mm [inches]



Flow rate chart



Codes & Standards

DIN 4109

ISO 3822

Scottish Water
Byelaws

UK Water Supply
Regulations

Ü-Zeichen



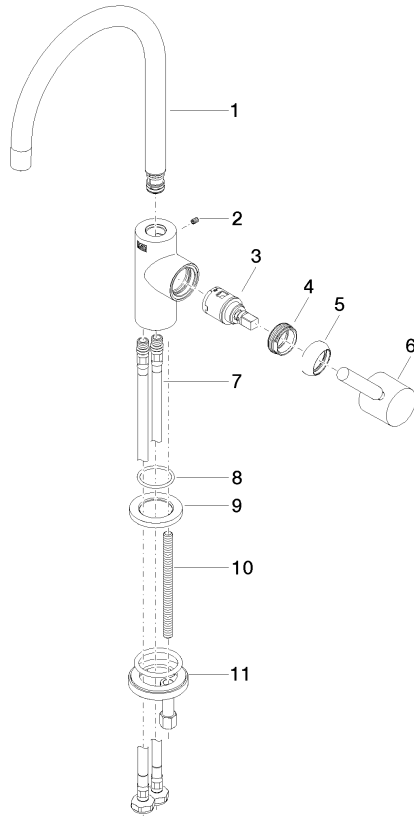
TARA BAR TAP Single-lever mixer - Chrome

TARA

33 805 888

Certificates

WRAS_240102 LGA_38





TARA BAR TAP Single-lever mixer - Chrome

TARA

33 805 888

Spare parts list

| No. | Item Number | Name | Quantity used | Delivery time |
|-----|--------------------|-------|---------------|---------------|
| | 90 28 22 393 00-00 | spout | 12 | - |

Spare part can no longer be ordered, please order the replacement item