

ENO Single-lever mixer Pull-out - Chrome

ENO

33 840 760



- 220mm projection
- pivotable spout 130°
- air-enriched flow
- height of mixer 167 mm
- height up to aerator 145 mm
- hole diameter 35 mm
- fabric braided hose 1500 mm
- max. flow 8 l/min at 3 bar flow pressure
- lead-free
- This product can help a building meet the requirements of Green Building Rating Systems, e.g. LEED®, BREEAM®, DGNB

Intrinsic protection against back flow.

| | | |
|--|--------------------------------|---------------|
|  | Chrome | 33 840 760-00 |
|  | Brushed Platinum | 33 840 760-06 |
|  | Platinum | 33 840 760-08 |
|  | Dark Chrome | 33 840 760-19 |
|  | Brushed Durabronze (23kt Gold) | 33 840 760-28 |
|  | Brushed Champagne (22kt Gold) | 33 840 760-46 |
|  | Champagne (22kt Gold) | 33 840 760-47 |
|  | Brushed Chrome | 33 840 760-93 |
|  | Brushed Dark Platinum | 33 840 760-99 |

Recommended miscellaneous

Strainer waste with control handle - Chrome 10 712 970-00

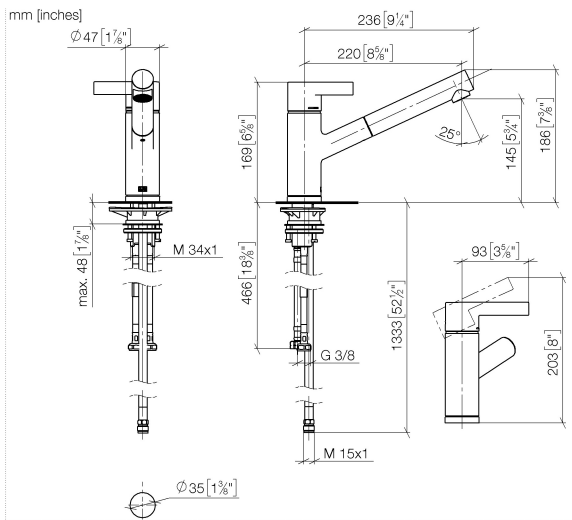


Recommended miscellaneous

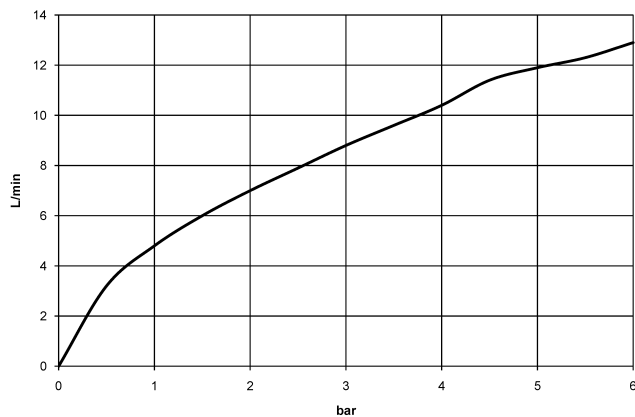
Dispenser without rosette - Chrome 82 424 970-00



33 840 760



Flow rate chart



Codes & Standards

DIN 4109

EN 1717

EN 817

Executive Order
no. 1007

ISO 3822

Ü-Zeichen

VA-Zeichen



ENO Single-lever mixer Pull-out - Chrome

ENO

33 840 760

Certificates

Belgaqua_22_277_2 ETA_20

GDV_0400

LGA_19

ENO Single-lever mixer Pull-out - Chrome

ENO

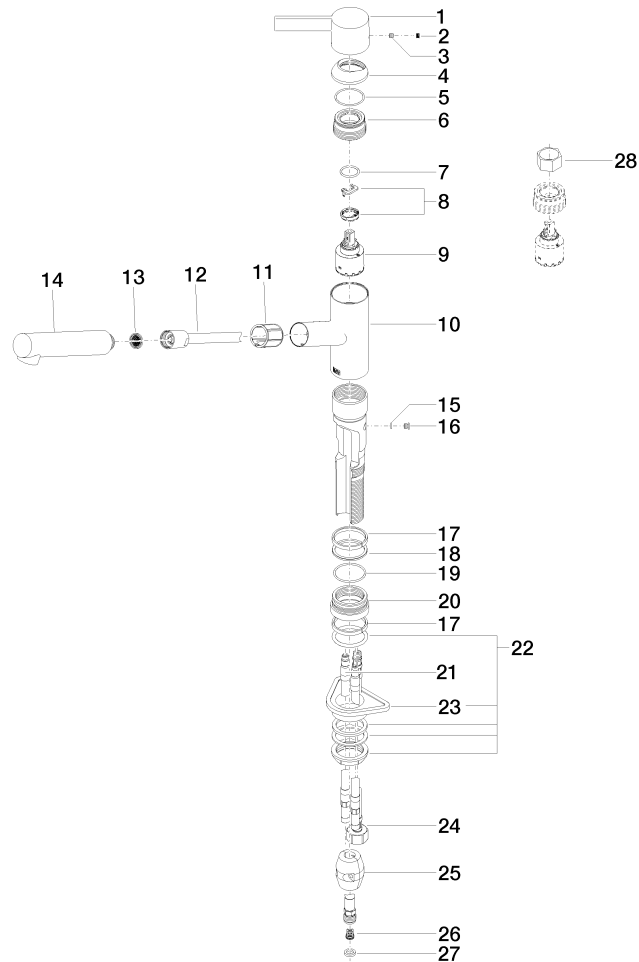
33 840 760

Product version up to 12/31/2013

Product version from 12/31/2013 to 3/5/2020

Product version from 3/5/2020 to 5/7/2021

Product version from 5/7/2021





ENO Single-lever mixer Pull-out - Chrome

ENO

33 840 760

Spare parts list

Product version up to 12/31/2013

Product version from 12/31/2013 to 3/5/2020

Product version from 3/5/2020 to 5/7/2021

Product version from 5/7/2021

| No. | Item Number | Name | Quantity used | Delivery time |
|-----|-----------------|--------|---------------|---------------|
| | 09 20 76 001-00 | handle | 30 | 10 |